

ADRA1A Antibody (monoclonal) (M01)**Mouse monoclonal antibody raised against a partial recombinant ADRA1A.****Catalog # AT1058a****Specification**

ADRA1A Antibody (monoclonal) (M01) - Product Information

Application	WB, E
Primary Accession	P35348
Other Accession	NM_033303
Reactivity	Human
Host	mouse
Clonality	Monoclonal
Isotype	IgG1 Kappa
Calculated MW	51487

ADRA1A Antibody (monoclonal) (M01) - Additional Information**Gene ID** 148**Other Names**

Alpha-1A adrenergic receptor, Alpha-1A adrenoreceptor, Alpha-1A adrenoceptor, Alpha-1C adrenergic receptor, Alpha-adrenergic receptor 1c, ADRA1A, ADRA1C

Target/Specificity

ADRA1A (NP_150646, 1 a.a. ~ 27 a.a) partial recombinant protein with GST tag. MW of the GST tag alone is 26 kDa.

Dilution

WB~~1:500~1000

E~~N/A

Format

Clear, colorless solution in phosphate buffered saline, pH 7.2 .

Storage

Store at -20°C or lower. Aliquot to avoid repeated freezing and thawing.

Precautions

ADRA1A Antibody (monoclonal) (M01) is for research use only and not for use in diagnostic or therapeutic procedures.

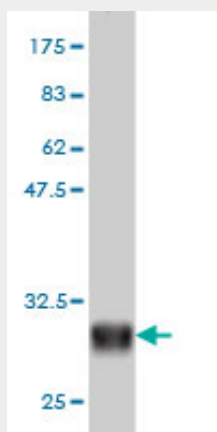
ADRA1A Antibody (monoclonal) (M01) - Protocols

Provided below are standard protocols that you may find useful for product applications.

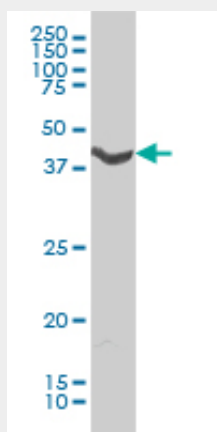
- [Western Blot](#)
- [Blocking Peptides](#)

- [Dot Blot](#)
- [Immunohistochemistry](#)
- [Immunofluorescence](#)
- [Immunoprecipitation](#)
- [Flow Cytometry](#)
- [Cell Culture](#)

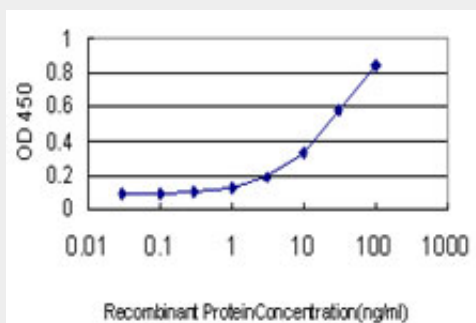
ADRA1A Antibody (monoclonal) (M01) - Images



Antibody Reactive Against Recombinant Protein. Western Blot detection against Immunogen (28.71 kDa) .



ADRA1A monoclonal antibody (M01), clone 4C7 Western Blot analysis of ADRA1A expression in HL-60 ((Cat # AT1058a)



Detection limit for recombinant GST tagged ADRA1A is approximately 0.3ng/ml as a capture antibody.

ADRA1A Antibody (monoclonal) (M01) - Background

Alpha-1-adrenergic receptors (alpha-1-ARs) are members of the G protein-coupled receptor superfamily. They activate mitogenic responses and regulate growth and proliferation of many cells. There are 3 alpha-1-AR subtypes: alpha-1A, -1B and -1D, all of which signal through the Gq/11 family of G-proteins and different subtypes show different patterns of activation. This gene encodes alpha-1A-adrenergic receptor. Alternative splicing of this gene generates four transcript variants, which encode four different isoforms with distinct C-termini but having similar ligand binding properties.

ADRA1A Antibody (monoclonal) (M01) - References

Association between Genetic Polymorphisms of Adrenergic Receptor and Diurnal Intraocular Pressure in Japanese Normal-Tension Glaucoma. Gao Y, et al. Ophthalmology, 2010 Aug 10. PMID 20705341. Variation at the NFATC2 Locus Increases the Risk of Thiazolidinedione-Induced Edema in the Diabetes REduction Assessment with ramipril and rosiglitazone Medication (DREAM) Study. Bailey SD, et al. Diabetes Care, 2010 Jul 13. PMID 20628086. Personalized smoking cessation: interactions between nicotine dose, dependence and quit-success genotype score. Rose JE, et al. Mol Med, 2010 Jul-Aug. PMID 20379614. Frequencies of polymorphisms in cytokines, neurotransmitters and adrenergic receptors in patients with complex regional pain syndrome type I after distal radial fracture. Herlyn P, et al. Clin J Pain, 2010 Mar-Apr. PMID 20173430. Lack of association between genetic polymorphisms affecting sympathetic activity and tilt-induced vasovagal syncope. Sorrentino S, et al. Auton Neurosci, 2010 Jun 24. PMID 20129829.