

**AFP Antibody (monoclonal) (M01)**  
**Mouse monoclonal antibody raised against a partial recombinant AFP.**  
**Catalog # AT1066a**

## Specification

---

### AFP Antibody (monoclonal) (M01) - Product Information

Application	WB, IF, IP, E
Primary Accession	<a href="#">P02771</a>
Other Accession	<a href="#">BC027881</a>
Reactivity	Human
Host	mouse
Clonality	Monoclonal
Isotype	IgG
Calculated MW	68678

### AFP Antibody (monoclonal) (M01) - Additional Information

**Gene ID** 174

#### Other Names

Alpha-fetoprotein, Alpha-1-fetoprotein, Alpha-fetoglobulin, AFP, HPAFP

#### Target/Specificity

AFP (AAH27881, 500 a.a. ~ 609 a.a) partial recombinant protein with GST tag. MW of the GST tag alone is 26 KDa.

#### Dilution

WB~~1:500~1000

IF~~1:50~200

IP~~N/A

E~~N/A

#### Format

Clear, colorless solution in phosphate buffered saline, pH 7.2 .

#### Storage

Store at -20°C or lower. Aliquot to avoid repeated freezing and thawing.

#### Precautions

AFP Antibody (monoclonal) (M01) is for research use only and not for use in diagnostic or therapeutic procedures.

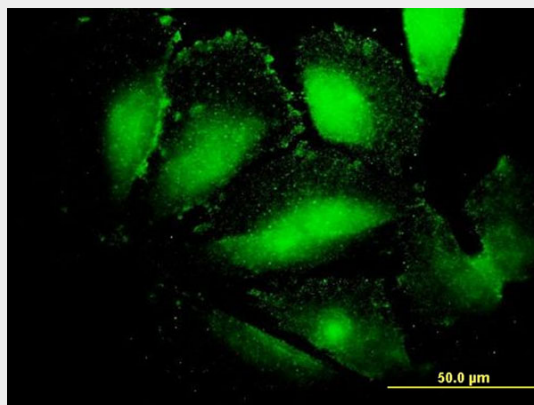
### AFP Antibody (monoclonal) (M01) - Protocols

Provided below are standard protocols that you may find useful for product applications.

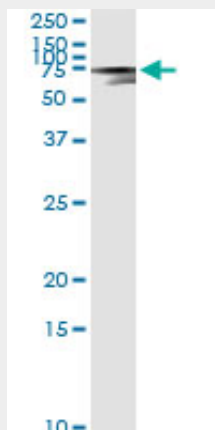
- [Western Blot](#)

- [Blocking Peptides](#)
- [Dot Blot](#)
- [Immunohistochemistry](#)
- [Immunofluorescence](#)
- [Immunoprecipitation](#)
- [Flow Cytometry](#)
- [Cell Culture](#)

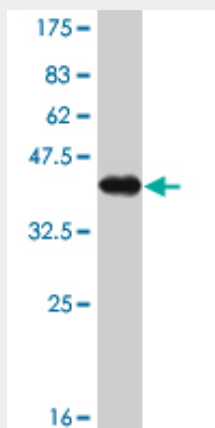
## AFP Antibody (monoclonal) (M01) - Images



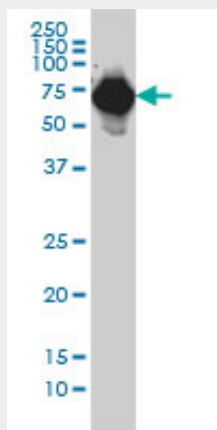
Immunofluorescence of monoclonal antibody to AFP on HepG2 cell. [antibody concentration 30 ug/ml]



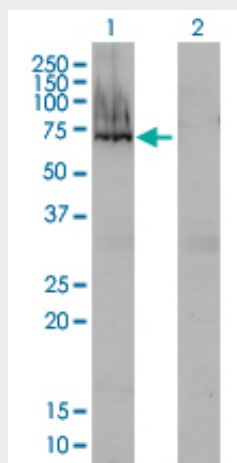
Immunoprecipitation of AFP transfected lysate using anti-AFP monoclonal antibody and Protein A Magnetic Bead ([U0007](#)), and immunoblotted with AFP MaxPab rabbit polyclonal antibody.



Antibody Reactive Against Recombinant Protein. Western Blot detection against Immunogen (37.84 KDa) .

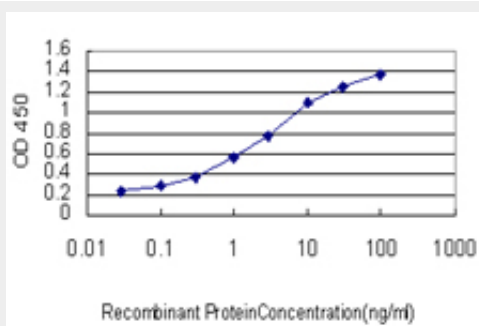


AFP monoclonal antibody (M01), clone 1G7 Western Blot analysis of AFP expression in HepG2 (Cat # AT1066a )



Western Blot analysis of AFP expression in transfected 293T cell line by AFP monoclonal antibody (M01), clone 1G7.

Lane 1: AFP transfected lysate(69 KDa).  
Lane 2: Non-transfected lysate.



Detection limit for recombinant GST tagged AFP is approximately 0.03ng/ml as a capture antibody.

#### AFP Antibody (monoclonal) (M01) - Background

This gene encodes alpha-fetoprotein, a major plasma protein produced by the yolk sac and the liver during fetal life. Alpha-fetoprotein expression in adults is often associated with hepatoma or teratoma. However, hereditary persistence of alpha-fetoprotein may also be found in individuals with no obvious pathology. The protein is thought to be the fetal counterpart of serum albumin, and the alpha-fetoprotein and albumin genes are present in tandem in the same transcriptional orientation on chromosome 4. Alpha-fetoprotein is found in monomeric as well as dimeric and trimeric forms, and binds copper, nickel, fatty acids and bilirubin. The level of alpha-fetoprotein in amniotic fluid is used to measure renal loss of protein to screen for spina bifida and anencephaly.

#### **AFP Antibody (monoclonal) (M01) - References**

1.Immunodevice for simultaneous detection of two relevant tumor markers based on separation of different microparticles by dielectrophoresis.Ramon-Azcon J, Yasukawa T, Mizutani F.Biosens Bioelectron. 2011 Aug 4. [Epub ahead of print]