

**AHSG Antibody (monoclonal) (M01)****Mouse monoclonal antibody raised against a full length recombinant AHSG.****Catalog # AT1076a****Specification**

---

**AHSG Antibody (monoclonal) (M01) - Product Information**

Application	WB, E
Primary Accession	<a href="#">P02765</a>
Other Accession	<a href="#">BC048198</a>
Reactivity	Human
Host	mouse
Clonality	Monoclonal
Isotype	IgG2a Kappa
Calculated MW	39341

**AHSG Antibody (monoclonal) (M01) - Additional Information****Gene ID** 197**Other Names**

Alpha-2-HS-glycoprotein, Alpha-2-Z-globulin, Ba-alpha-2-glycoprotein, Fetuin-A, Alpha-2-HS-glycoprotein chain A, Alpha-2-HS-glycoprotein chain B, AHSG, FETUA

**Target/Specificity**

AHSG (AAH48198.1, 19 a.a. ~ 367 a.a) full-length recombinant protein with GST tag. MW of the GST tag alone is 26 KDa.

**Dilution**

WB~~1:500~1000

E~~N/A

**Format**

Clear, colorless solution in phosphate buffered saline, pH 7.2 .

**Storage**

Store at -20°C or lower. Aliquot to avoid repeated freezing and thawing.

**Precautions**

AHSG Antibody (monoclonal) (M01) is for research use only and not for use in diagnostic or therapeutic procedures.

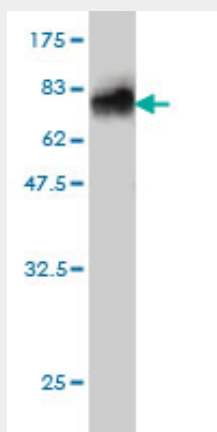
**AHSG Antibody (monoclonal) (M01) - Protocols**

Provided below are standard protocols that you may find useful for product applications.

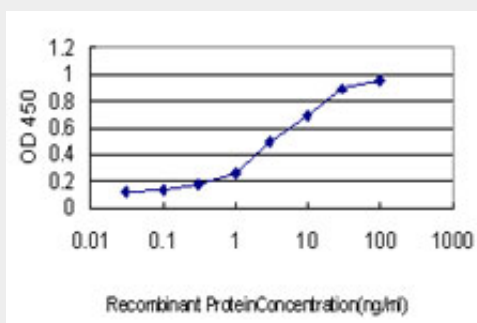
- [Western Blot](#)
- [Blocking Peptides](#)

- [Dot Blot](#)
- [Immunohistochemistry](#)
- [Immunofluorescence](#)
- [Immunoprecipitation](#)
- [Flow Cytometry](#)
- [Cell Culture](#)

### AHSG Antibody (monoclonal) (M01) - Images



Antibody Reactive Against Recombinant Protein. Western Blot detection against Immunogen (64.13 kDa) .



Detection limit for recombinant GST tagged AHSG is approximately 0.1 ng/ml as a capture antibody.

### AHSG Antibody (monoclonal) (M01) - Background

Alpha2-HS glycoprotein (AHSG), a glycoprotein present in the serum, is synthesized by hepatocytes. The AHSG molecule consists of two polypeptide chains, which are both cleaved from a proprotein encoded from a single mRNA. It is involved in several functions, such as endocytosis, brain development and the formation of bone tissue. The protein is commonly present in the cortical plate of the immature cerebral cortex and bone marrow hemopoietic matrix, and it has therefore been postulated that it participates in the development of the tissues. However, its exact significance is still obscure.

### AHSG Antibody (monoclonal) (M01) - References

1. A proteomics approach to identify changes in protein profiles in serum of Familial Adenomatous Polyposis patients. Quaresima B, Crugliano T, Gaspari M, Faniello MC, Cosimo P, Valanzano R, Genuardi M, Cannataro M, Veltri P, Baudi F, Doldo P, Cuda G, Venuta S, Costanzo F. Cancer Lett. 2008 Dec 8;272(1):40-52. Epub 2008 Jul 29.