

AKAP12 Antibody (monoclonal) (M01)**Mouse monoclonal antibody raised against a partial recombinant AKAP12.****Catalog # AT1083a****Specification**

AKAP12 Antibody (monoclonal) (M01) - Product Information

Application	WB, E
Primary Accession	Q02952
Other Accession	NM_005100
Reactivity	Human
Host	mouse
Clonality	Monoclonal
Isotype	IgG2b Kappa
Calculated MW	191482

AKAP12 Antibody (monoclonal) (M01) - Additional Information**Gene ID** 9590**Other Names**

A-kinase anchor protein 12, AKAP-12, A-kinase anchor protein 250 kDa, AKAP 250, Gravin, Myasthenia gravis autoantigen, AKAP12, AKAP250

Target/Specificity

AKAP12 (NP_005091, 1675 a.a. ~ 1782 a.a) partial recombinant protein with GST tag. MW of the GST tag alone is 26 KDa.

Dilution

WB~~1:500~1000

E~~N/A

Format

Clear, colorless solution in phosphate buffered saline, pH 7.2 .

Storage

Store at -20°C or lower. Aliquot to avoid repeated freezing and thawing.

Precautions

AKAP12 Antibody (monoclonal) (M01) is for research use only and not for use in diagnostic or therapeutic procedures.

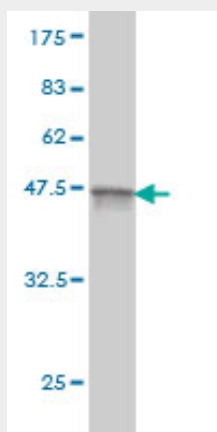
AKAP12 Antibody (monoclonal) (M01) - Protocols

Provided below are standard protocols that you may find useful for product applications.

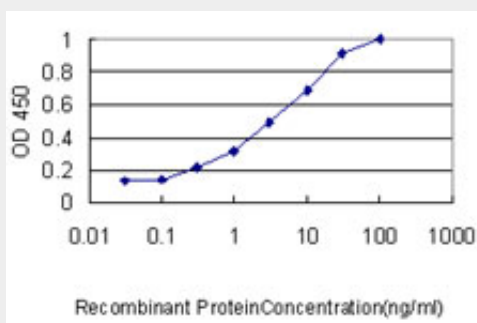
- [Western Blot](#)
- [Blocking Peptides](#)

- [Dot Blot](#)
- [Immunohistochemistry](#)
- [Immunofluorescence](#)
- [Immunoprecipitation](#)
- [Flow Cytometry](#)
- [Cell Culture](#)

AKAP12 Antibody (monoclonal) (M01) - Images



Antibody Reactive Against Recombinant Protein. Western Blot detection against Immunogen (37.62 KDa) .



Detection limit for recombinant GST tagged AKAP12 is approximately 0.03ng/ml as a capture antibody.

AKAP12 Antibody (monoclonal) (M01) - Background

The A-kinase anchor proteins (AKAPs) are a group of structurally diverse proteins, which have the common function of binding to the regulatory subunit of protein kinase A (PKA) and confining the holoenzyme to discrete locations within the cell. This gene encodes a member of the AKAP family. The encoded protein is expressed in endothelial cells, cultured fibroblasts, and osteosarcoma cells. It associates with protein kinases A and C and phosphatase, and serves as a scaffold protein in signal transduction. This protein and RII PKA colocalize at the cell periphery. This protein is a cell growth-related protein. Antibodies to this protein can be produced by patients with myasthenia gravis. Alternative splicing of this gene results in two transcript variants encoding different isoforms.

AKAP12 Antibody (monoclonal) (M01) - References

1. iTRAQ analysis of colorectal cancer cell lines suggests Drebrin (DBN1) is overexpressed during liver metastasis. Lin Q, Tan HT, Lim TK, Khoo A, Lim KH, Chung MC. *Proteomics*. 2014 Jun;14(11):1434-43. doi: 10.1002/pmic.201300462. Epub 2014 Apr 17.

2. Quantitative and temporal

proteome analysis of butyrate-treated colorectal cancer cells. Tan HT, Tan S, Lin Q, Lim TK, Hew CL, Chung MC. Mol Cell Proteomics. 2008 Jun;7(6):1174-85. Epub 2008 Mar 14.