

**AKAP8 Antibody (monoclonal) (M01)****Mouse monoclonal antibody raised against a partial recombinant AKAP8.****Catalog # AT1089a****Specification**

---

**AKAP8 Antibody (monoclonal) (M01) - Product Information**

Application	IF, IP, WB, IHC, E
Primary Accession	<a href="#">O43823</a>
Other Accession	<a href="#">NM_005858</a>
Reactivity	Human
Host	mouse
Clonality	Monoclonal
Isotype	IgG2a Kappa
Calculated MW	76108

**AKAP8 Antibody (monoclonal) (M01) - Additional Information****Gene ID** 10270**Other Names**

A-kinase anchor protein 8, AKAP-8, A-kinase anchor protein 95 kDa, AKAP 95, AKAP8, AKAP95

**Target/Specificity**

AKAP8 (NP\_005849, 551 a.a. ~ 662 a.a) partial recombinant protein with GST tag. MW of the GST tag alone is 26 KDa.

**Dilution**

WB~~1:500~1000

**Format**

Clear, colorless solution in phosphate buffered saline, pH 7.2 .

**Storage**

Store at -20°C or lower. Aliquot to avoid repeated freezing and thawing.

**Precautions**

AKAP8 Antibody (monoclonal) (M01) is for research use only and not for use in diagnostic or therapeutic procedures.

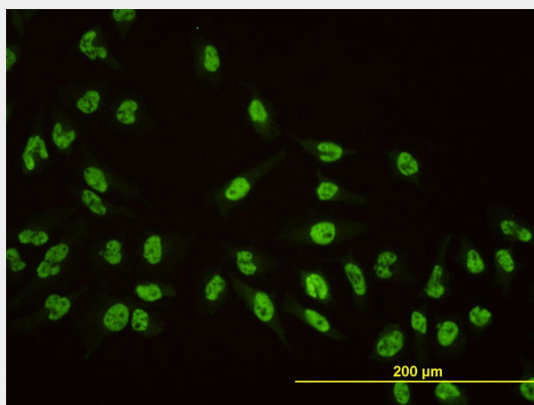
**AKAP8 Antibody (monoclonal) (M01) - Protocols**

Provided below are standard protocols that you may find useful for product applications.

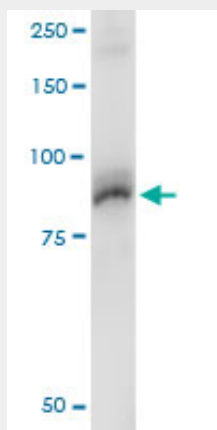
- [Western Blot](#)
- [Blocking Peptides](#)
- [Dot Blot](#)
- [Immunohistochemistry](#)

- [Immunofluorescence](#)
- [Immunoprecipitation](#)
- [Flow Cytometry](#)
- [Cell Culture](#)

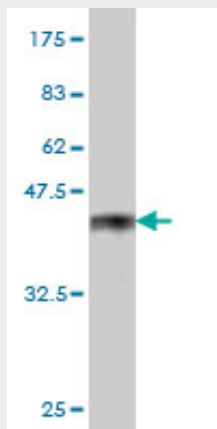
#### AKAP8 Antibody (monoclonal) (M01) - Images



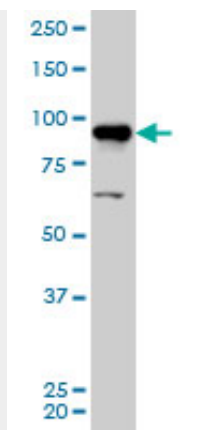
Immunofluorescence of monoclonal antibody to AKAP8 on HeLa cell. [antibody concentration 10 ug/ml]



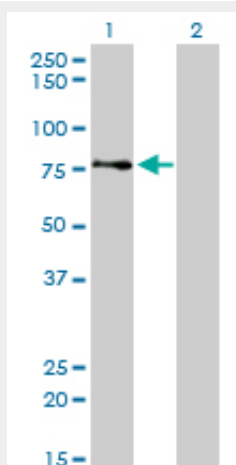
Immunoprecipitation of AKAP8 transfected lysate using anti-AKAP8 monoclonal antibody and Protein A Magnetic Bead ([U0007](#)), and immunoblotted with AKAP8 monoclonal antibody.



Antibody Reactive Against Recombinant Protein. Western Blot detection against Immunogen (38.06 kDa) .



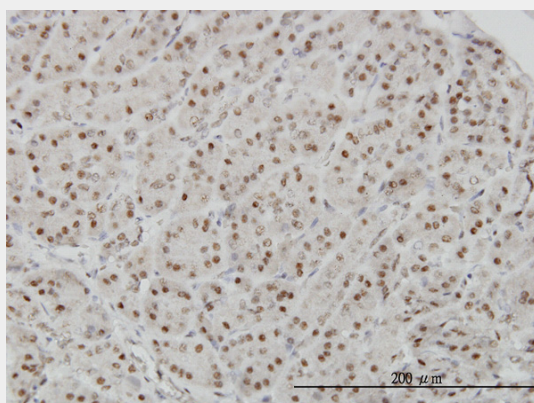
AKAP8 monoclonal antibody (M01), clone 3D4 Western Blot analysis of AKAP8 expression in HeLa S3 NE (Cat # AT1089a)



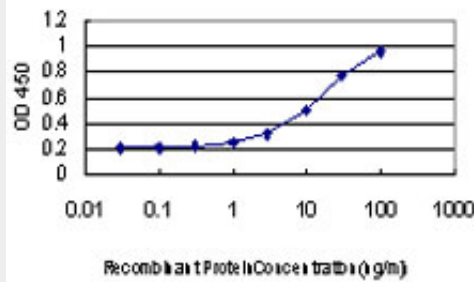
Western Blot analysis of AKAP8 expression in transfected 293T cell line by AKAP8 monoclonal antibody (M01), clone 3D4.

Lane 1: AKAP8 transfected lysate(76.2 KDa).

Lane 2: Non-transfected lysate.



Immunoperoxidase of monoclonal antibody to AKAP8 on formalin-fixed paraffin-embedded human pancreas. [antibody concentration 3 ug/ml]



Detection limit for recombinant GST tagged AKAP8 is approximately 0.3ng/ml as a capture antibody.

### **AKAP8 Antibody (monoclonal) (M01) - Background**

The A-kinase anchor proteins (AKAPs) are a group of structurally diverse proteins, which have the common function of binding to the regulatory subunit of protein kinase A (PKA) and confining the holoenzyme to discrete locations within the cell. This gene encodes a member of the AKAP family. The encoded protein is located in the nucleus during interphase and is distinctly redistributed during mitosis. This protein has a cell cycle-dependent interaction with the RII subunit of PKA.

### **AKAP8 Antibody (monoclonal) (M01) - References**

Toward a confocal subcellular atlas of the human proteome. Barbe L, et al. Mol Cell Proteomics, 2008 Mar. PMID 18029348. Global, in vivo, and site-specific phosphorylation dynamics in signaling networks. Olsen JV, et al. Cell, 2006 Nov 3. PMID 17081983. A probability-based approach for high-throughput protein phosphorylation analysis and site localization. Beausoleil SA, et al. Nat Biotechnol, 2006 Oct. PMID 16964243. A-kinase-anchoring protein 95 functions as a potential carrier for the nuclear translocation of active caspase 3 through an enzyme-substrate-like association. Kamada S, et al. Mol Cell Biol, 2005 Nov. PMID 16227597. Large-scale characterization of HeLa cell nuclear phosphoproteins. Beausoleil SA, et al. Proc Natl Acad Sci U S A, 2004 Aug 17. PMID 15302935.