

ALB Antibody (monoclonal) (M01)
Mouse monoclonal antibody raised against a full length recombinant ALB.
Catalog # AT1109a

Specification

ALB Antibody (monoclonal) (M01) - Product Information

Application	WB, IHC, IP, E
Primary Accession	P02768
Other Accession	BC034023
Reactivity	Human
Host	mouse
Clonality	Monoclonal
Isotype	IgG1 kappa
Calculated MW	69367

ALB Antibody (monoclonal) (M01) - Additional Information

Gene ID 213

Other Names

Serum albumin, ALB

Target/Specificity

ALB (AAH34023, 19 a.a. ~ 609 a.a) full-length recombinant protein with GST tag. MW of the GST tag alone is 26 KDa.

Dilution

WB~~1:500~1000

IHC~~1:100~500

IP~~N/A

E~~N/A

Format

Clear, colorless solution in phosphate buffered saline, pH 7.2 .

Storage

Store at -20°C or lower. Aliquot to avoid repeated freezing and thawing.

Precautions

ALB Antibody (monoclonal) (M01) is for research use only and not for use in diagnostic or therapeutic procedures.

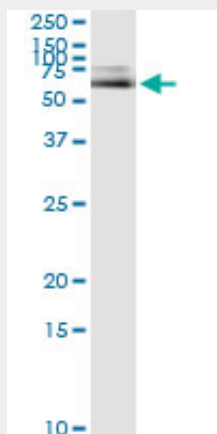
ALB Antibody (monoclonal) (M01) - Protocols

Provided below are standard protocols that you may find useful for product applications.

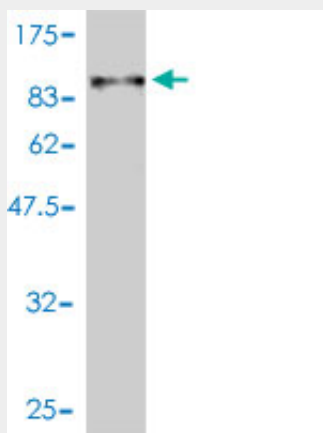
- [Western Blot](#)

- [Blocking Peptides](#)
- [Dot Blot](#)
- [Immunohistochemistry](#)
- [Immunofluorescence](#)
- [Immunoprecipitation](#)
- [Flow Cytometry](#)
- [Cell Culture](#)

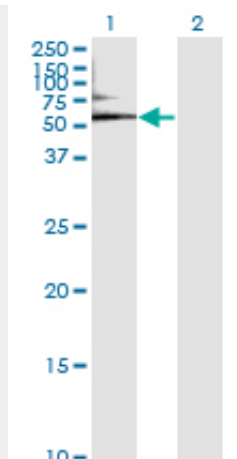
ALB Antibody (monoclonal) (M01) - Images



Immunoprecipitation of ALB transfected lysate using anti-ALB monoclonal antibody and Protein A Magnetic Bead ([U0007](#)), and immunoblotted with ALB MaxPab rabbit polyclonal antibody.



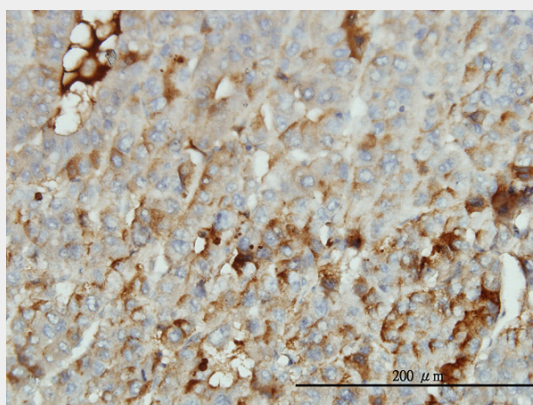
Antibody Reactive Against Recombinant Protein. Western Blot detection against Immunogen (90.75 kDa) .



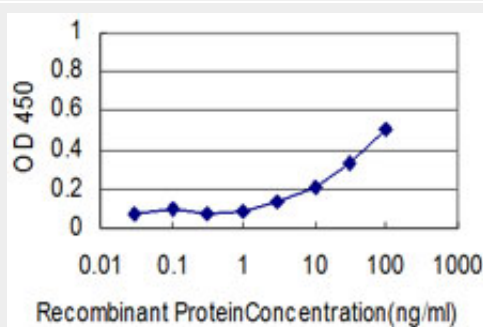
Western Blot analysis of ALB expression in transfected 293T cell line by ALB monoclonal antibody (M01), clone 1G12-1B3.

Lane 1: ALB transfected lysate(69.4 KDa).

Lane 2: Non-transfected lysate.



Immunoperoxidase of monoclonal antibody to ALB on formalin-fixed paraffin-embedded human hepatocellular carcinoma tissue. [antibody concentration 3 ug/ml]



Detection limit for recombinant GST tagged ALB is approximately 1ng/ml as a capture antibody.

ALB Antibody (monoclonal) (M01) - Background

Albumin is a soluble, monomeric protein which comprises about one-half of the blood serum protein. Albumin functions primarily as a carrier protein for steroids, fatty acids, and thyroid hormones and plays a role in stabilizing extracellular fluid volume. Albumin is a globular unglycosylated serum protein of molecular weight 65,000. Albumin is synthesized in the liver as prealbumin which has an N-terminal peptide that is removed before the nascent protein is

released from the rough endoplasmic reticulum. The product, proalbumin, is in turn cleaved in the Golgi vesicles to produce the secreted albumin.

ALB Antibody (monoclonal) (M01) - References

1.Hypoalbuminemia in early onset dentatorubral-pallidoluysian atrophy due to leakage of albumin in multiple organs.Nagai S, Saito Y, Endo Y, Saito T, Sugai K, Ishiyama A, Komaki H, Nakagawa E, Sasaki M, Ito K, Saito Y, Sukigara S, Ito M, Goto YI, Ito S, Matsuoka K.J Neurol. 2012 Dec 23.2.S-Adenosylmethionine Dependent Protein Methylation is Required for Expression of Selenoprotein P and Gluconeogenic Enzymes in Human Hepatocytes.Jackson MI, Cao J, Zeng H, Uthus EO, Combs GF Jr.J Biol Chem. 2012 Aug 29.