

ALDH3B2 Antibody (monoclonal) (M01)

Mouse monoclonal antibody raised against a full length recombinant ALDH3B2.

Catalog # AT1113a

Specification

ALDH3B2 Antibody (monoclonal) (M01) - Product Information

Application	E
Primary Accession	P48448
Other Accession	BC007685
Reactivity	Human
Host	mouse
Clonality	Monoclonal
Isotype	IgG1 kappa
Calculated MW	42635

ALDH3B2 Antibody (monoclonal) (M01) - Additional Information

Gene ID 222

Other Names

Aldehyde dehydrogenase family 3 member B2, Aldehyde dehydrogenase 8, ALDH3B2, ALDH8

Target/Specificity

ALDH3B2 (AAH07685, 1 a.a. ~ 385 a.a) full-length recombinant protein with GST tag. MW of the GST tag alone is 26 KDa.

Dilution

E~~N/A

Format

Clear, colorless solution in phosphate buffered saline, pH 7.2 .

Storage

Store at -20°C or lower. Aliquot to avoid repeated freezing and thawing.

Precautions

ALDH3B2 Antibody (monoclonal) (M01) is for research use only and not for use in diagnostic or therapeutic procedures.

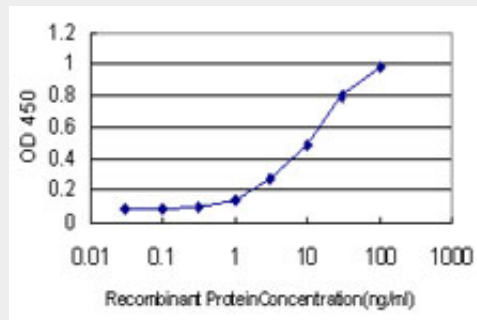
ALDH3B2 Antibody (monoclonal) (M01) - Protocols

Provided below are standard protocols that you may find useful for product applications.

- [Western Blot](#)
- [Blocking Peptides](#)
- [Dot Blot](#)
- [Immunohistochemistry](#)

- [Immunofluorescence](#)
- [Immunoprecipitation](#)
- [Flow Cytometry](#)
- [Cell Culture](#)

ALDH3B2 Antibody (monoclonal) (M01) - Images



Detection limit for recombinant GST tagged ALDH3B2 is approximately 0.3ng/ml as a capture antibody.

ALDH3B2 Antibody (monoclonal) (M01) - Background

This gene encodes a member of the aldehyde dehydrogenase family, a group of isozymes that may play a major role in the detoxification of aldehydes generated by alcohol metabolism and lipid peroxidation. The gene of this particular family member is over 10 kb in length. The expression of these transcripts is restricted to the salivary gland among the human tissues examined. Alternate transcriptional splice variants have been characterized.

ALDH3B2 Antibody (monoclonal) (M01) - References

1. EXTRACELLULAR AND MEMBRANE-ASSOCIATED PROSTATE CANCER MARKERS Klee, George G.
; Vasmatzis, George; Kosari, Farhad; Klee, Eric W. FreshPatents.com