

ALDOA Antibody (monoclonal) (M01)**Mouse monoclonal antibody raised against a full length recombinant ALDOA.****Catalog # AT1115a****Specification**

ALDOA Antibody (monoclonal) (M01) - Product Information

Application	WB, IF
Primary Accession	P04075
Other Accession	BC010660
Reactivity	Human
Host	mouse
Clonality	Monoclonal
Isotype	IgG2b Kappa
Calculated MW	39420

ALDOA Antibody (monoclonal) (M01) - Additional Information**Gene ID** 226**Other Names**

Fructose-bisphosphate aldolase A, Lung cancer antigen NY-LU-1, Muscle-type aldolase, ALDOA, ALDA

Target/Specificity

ALDOA (AAH10660.1, 1 a.a. ~ 364 a.a) full-length recombinant protein with GST tag. MW of the GST tag alone is 26 KDa.

Dilution

WB~~1:500~1000

IF~~1:50~200

Format

Clear, colorless solution in phosphate buffered saline, pH 7.2 .

Storage

Store at -20°C or lower. Aliquot to avoid repeated freezing and thawing.

Precautions

ALDOA Antibody (monoclonal) (M01) is for research use only and not for use in diagnostic or therapeutic procedures.

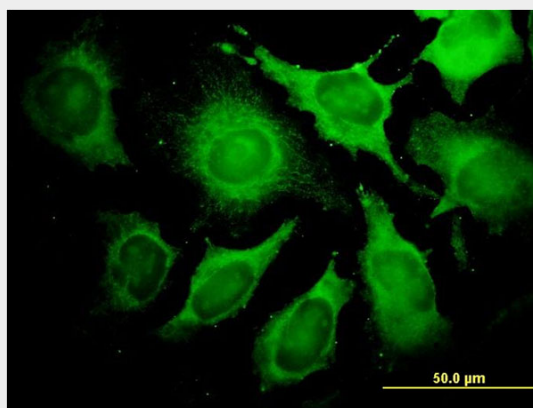
ALDOA Antibody (monoclonal) (M01) - Protocols

Provided below are standard protocols that you may find useful for product applications.

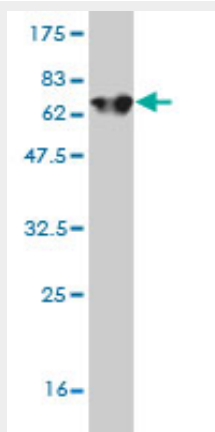
- [Western Blot](#)
- [Blocking Peptides](#)

- [Dot Blot](#)
- [Immunohistochemistry](#)
- [Immunofluorescence](#)
- [Immunoprecipitation](#)
- [Flow Cytometry](#)
- [Cell Culture](#)

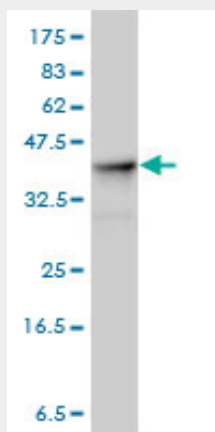
ALDOA Antibody (monoclonal) (M01) - Images



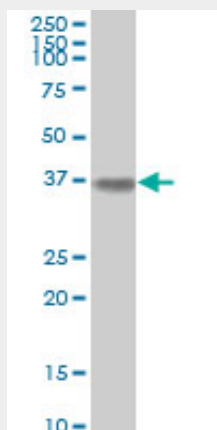
Immunofluorescence of monoclonal antibody to ALDOA on HeLa cell. [antibody concentration 10 ug/ml]



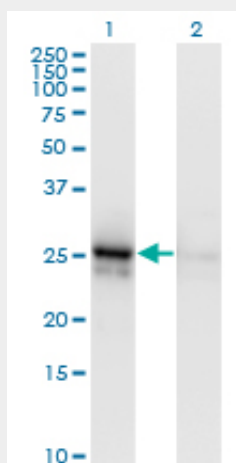
Antibody Reactive Against Recombinant Protein. Western Blot detection against Immunogen (65.78 KDa) .



ALDOA monoclonal antibody (M01), clone 3D9-6F3. Western Blot analysis of ALDOA expression in human omentum, serous carcinoma.



ALDOA monoclonal antibody (M01), clone 3D9-6F3 Western Blot analysis of ALDOA expression in IMR-32 (Cat # AT1115a)



Western Blot analysis of ALDOA expression in transfected 293T cell line by ALDOA monoclonal antibody (M01), clone 3D9-6F3.

Lane 1: ALDOA transfected lysate (Predicted MW: 39.4 kDa).
Lane 2: Non-transfected lysate.

ALDOA Antibody (monoclonal) (M01) - Background

This gene product, Aldolase A (fructose-bisphosphate aldolase) is a glycolytic enzyme that catalyzes the reversible conversion of fructose-1,6-bisphosphate to glyceraldehyde 3-phosphate and dihydroxyacetone phosphate. Three aldolase isozymes (A, B, and C), encoded by three different genes, are differentially expressed during development. Aldolase A is found in the developing embryo and is produced in even greater amounts in adult muscle. Aldolase A expression is repressed in adult liver, kidney and intestine and similar to aldolase C levels in brain and other nervous tissue. Aldolase A deficiency has been associated with myopathy and hemolytic anemia. Alternative splicing of this gene results in multiple transcript variants which encode the same protein.

ALDOA Antibody (monoclonal) (M01) - References

1. Identification of sperm head proteins involved in zona pellucida binding. Petit FM, Serres C,

Bourgeon F, Pineau C, Auer J. Hum Reprod. 2013 Jan 25. [Epub ahead of print] 2. Fructose-1,6-bisphosphate aldolase A is involved in HaCaT cell migration by inducing lamellipodia formation. Tochio T, Tanaka H, Nakata S, Hosoya H. Journal of Dermatological Science (2008), doi:10.1016/j.jdermsci.2010.02.012