

APLN Antibody (monoclonal) (M01)

Mouse monoclonal antibody raised against a full length recombinant APLN.

Catalog # AT1162a

Specification

APLN Antibody (monoclonal) (M01) - Product Information

Application	WB, E
Primary Accession	O9ULZ1
Other Accession	BC021104.1
Reactivity	Human
Host	mouse
Clonality	Monoclonal
Isotype	IgG1 Kappa
Calculated MW	8569

APLN Antibody (monoclonal) (M01) - Additional Information**Gene ID** 8862**Other Names**

Apelin, APJ endogenous ligand, Apelin-36, Apelin-31, Apelin-28, Apelin-13, APLN, APEL

Target/Specificity

APLN (AAH21104.1, 1 a.a. ~ 122 a.a) full-length recombinant protein with GST tag. MW of the GST tag alone is 26 KDa.

Dilution

WB~~1:500~1000

Format

Clear, colorless solution in phosphate buffered saline, pH 7.2 .

Storage

Store at -20°C or lower. Aliquot to avoid repeated freezing and thawing.

Precautions

APLN Antibody (monoclonal) (M01) is for research use only and not for use in diagnostic or therapeutic procedures.

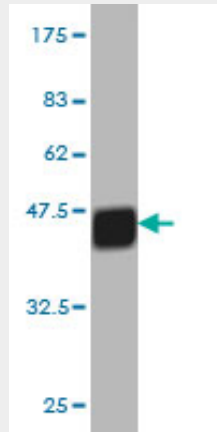
APLN Antibody (monoclonal) (M01) - Protocols

Provided below are standard protocols that you may find useful for product applications.

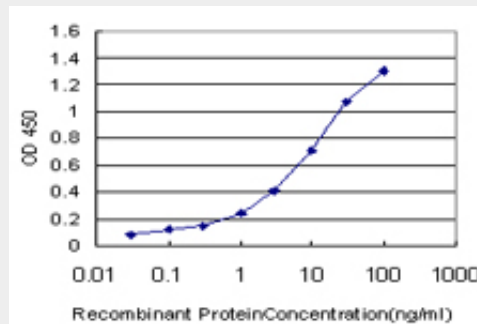
- [Western Blot](#)
- [Blocking Peptides](#)
- [Dot Blot](#)
- [Immunohistochemistry](#)

- [Immunofluorescence](#)
- [Immunoprecipitation](#)
- [Flow Cytometry](#)
- [Cell Culture](#)

APLN Antibody (monoclonal) (M01) - Images



Antibody Reactive Against Recombinant Protein. Western Blot detection against Immunogen (39.16 KDa) .



Detection limit for recombinant GST tagged APLN is approximately 0.1ng/ml as a capture antibody.

APLN Antibody (monoclonal) (M01) - Background

This gene encodes a peptide that functions as an endogenous ligand for the G protein coupled receptor APJ. The encoded protein is synthesized as a prepropeptide that is processed into biologically active C-terminal fragments. The peptide fragments activate different tissue specific signaling pathways that regulate diverse biological functions including fluid homeostasis, cardiovascular function and insulin secretion. This protein also functions as a coreceptor for the human immunodeficiency virus 1.

APLN Antibody (monoclonal) (M01) - References

Elevated plasma levels of apelin in children with type 1 diabetes mellitus. Meral C, et al. J Pediatr Endocrinol Metab, 2010 May. PMID 20662349. Variation at the NFATC2 Locus Increases the Risk of Thiazolidinedione-Induced Edema in the Diabetes REduction Assessment with ramipril and rosiglitazone Medication (DREAM) Study. Bailey SD, et al. Diabetes Care, 2010 Jul 13. PMID 20628086. Plasma apelin and ADMA Levels in patients with essential hypertension. Sonmez A, et al. Clin Exp Hypertens, 2010 May. PMID 20504125. Validation of genetic association in apelin-AGTRL1 system with hypertension in a larger Han Chinese population. Niu W, et al. J Hypertens, 2010 Sep. PMID 20485192. Assessment of serum apelin levels in girls with anorexia nervosa. Ziora K, et al. J

Clin Endocrinol Metab, 2010 Jun. PMID 20382684.