

APLN Antibody (monoclonal) (M02)

Mouse monoclonal antibody raised against a full length recombinant APLN.

Catalog # AT1163a

Specification

APLN Antibody (monoclonal) (M02) - Product Information

Application	WB, E
Primary Accession	O9ULZ1
Other Accession	BC021104.1
Reactivity	Human
Host	mouse
Clonality	Monoclonal
Isotype	IgG1 Kappa
Calculated MW	8569

APLN Antibody (monoclonal) (M02) - Additional Information**Gene ID** 8862**Other Names**

Apelin, APJ endogenous ligand, Apelin-36, Apelin-31, Apelin-28, Apelin-13, APLN, APEL

Target/Specificity

APLN (AAH21104.1, 1 a.a. ~ 122 a.a) full-length recombinant protein with GST tag. MW of the GST tag alone is 26 KDa.

Dilution

WB~~1:500~1000

Format

Clear, colorless solution in phosphate buffered saline, pH 7.2 .

Storage

Store at -20°C or lower. Aliquot to avoid repeated freezing and thawing.

Precautions

APLN Antibody (monoclonal) (M02) is for research use only and not for use in diagnostic or therapeutic procedures.

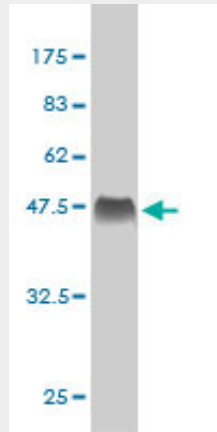
APLN Antibody (monoclonal) (M02) - Protocols

Provided below are standard protocols that you may find useful for product applications.

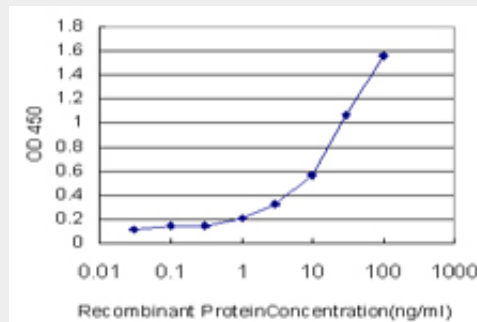
- [Western Blot](#)
- [Blocking Peptides](#)
- [Dot Blot](#)
- [Immunohistochemistry](#)

- [Immunofluorescence](#)
- [Immunoprecipitation](#)
- [Flow Cytometry](#)
- [Cell Culture](#)

APLN Antibody (monoclonal) (M02) - Images



Antibody Reactive Against Recombinant Protein. Western Blot detection against Immunogen (39.16 KDa) .



Detection limit for recombinant GST tagged APLN is approximately 0.03ng/ml as a capture antibody.

APLN Antibody (monoclonal) (M02) - Background

This gene encodes a peptide that functions as an endogenous ligand for the G protein coupled receptor APJ. The encoded protein is synthesized as a prepropeptide that is processed into biologically active C-terminal fragments. The peptide fragments activate different tissue specific signaling pathways that regulate diverse biological functions including fluid homeostasis, cardiovascular function and insulin secretion. This protein also functions as a coreceptor for the human immunodeficiency virus 1.

APLN Antibody (monoclonal) (M02) - References

Elevated plasma levels of apelin in children with type 1 diabetes mellitus. Meral C, et al. *J Pediatr Endocrinol Metab*, 2010 May. PMID 20662349. Variation at the NFATC2 Locus Increases the Risk of Thiazolidinedione-Induced Edema in the Diabetes REduction Assessment with ramipril and rosiglitazone Medication (DREAM) Study. Bailey SD, et al. *Diabetes Care*, 2010 Jul 13. PMID 20628086. Plasma apelin and ADMA Levels in patients with essential hypertension. Sonmez A, et al. *Clin Exp Hypertens*, 2010 May. PMID 20504125. Validation of genetic association in apelin-AGTRL1 system with hypertension in a larger Han Chinese population. Niu W, et al. *J Hypertens*, 2010 Sep. PMID 20485192. Assessment of serum apelin levels in girls with anorexia nervosa. Ziora K, et al. *J*

Clin Endocrinol Metab, 2010 Jun. PMID 20382684.