

APOC1 Antibody (monoclonal) (M01)

Mouse monoclonal antibody raised against a full length recombinant APOC1.

Catalog # AT1167a

Specification

APOC1 Antibody (monoclonal) (M01) - Product Information

Application	WB
Primary Accession	P02654
Other Accession	BC009698
Reactivity	Human
Host	mouse
Clonality	Monoclonal
Isotype	IgG1 kappa
Calculated MW	9332

APOC1 Antibody (monoclonal) (M01) - Additional Information

Gene ID 341

Other Names

Apolipoprotein C-I, Apo-CI, ApoC-I, Apolipoprotein C1, Truncated apolipoprotein C-I, APOC1

Target/Specificity

APOC1 (AAH09698, 1 a.a. ~ 83 a.a) full-length recombinant protein with GST tag. MW of the GST tag alone is 26 KDa.

Dilution

WB~~1:500~1000

Format

Clear, colorless solution in phosphate buffered saline, pH 7.2 .

Storage

Store at -20°C or lower. Aliquot to avoid repeated freezing and thawing.

Precautions

APOC1 Antibody (monoclonal) (M01) is for research use only and not for use in diagnostic or therapeutic procedures.

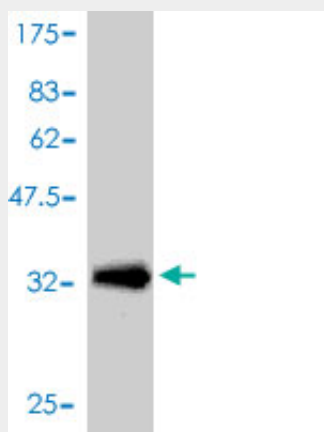
APOC1 Antibody (monoclonal) (M01) - Protocols

Provided below are standard protocols that you may find useful for product applications.

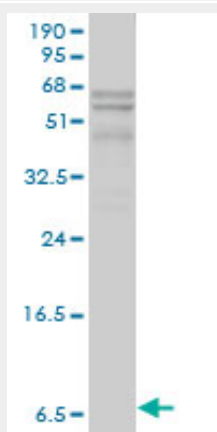
- [Western Blot](#)
- [Blocking Peptides](#)
- [Dot Blot](#)
- [Immunohistochemistry](#)

- [Immunofluorescence](#)
- [Immunoprecipitation](#)
- [Flow Cytometry](#)
- [Cell Culture](#)

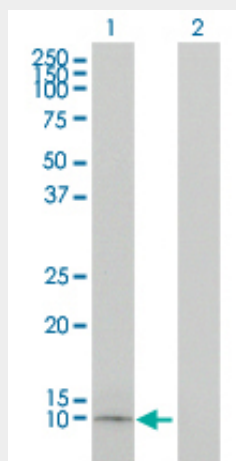
APOC1 Antibody (monoclonal) (M01) - Images



Antibody Reactive Against Recombinant Protein. Western Blot detection against Immunogen (34.87 kDa) .



APOC1 monoclonal antibody (M01), clone 2E2-1A3. Western Blot analysis of APOC1 expression in human liver.



Western Blot analysis of APOC1 expression in transfected 293T cell line by APOC1 monoclonal antibody (M01), clone 2E2-1A3.

Lane 1: APOC1 transfected lysate(9 KDa).

Lane 2: Non-transfected lysate.

APOC1 Antibody (monoclonal) (M01) - Background

The protein encoded by this gene is a member of the apolipoprotein C1 family. This gene is expressed primarily in the liver, and it is activated when monocytes differentiate into macrophages. A pseudogene of this gene is located 4 kb downstream in the same orientation, on the same chromosome. This gene is mapped to chromosome 19, where it resides within a apolipoprotein gene cluster. Alternatively spliced transcript variants have been found for this gene, but the biological validity of some variants has not been determined.

APOC1 Antibody (monoclonal) (M01) - References

1. Proteins related to lipoprotein profile were identified using a pharmaco-proteomic approach as markers for growth response to growth hormone (GH) treatment in short prepubertal children. Andersson B, Hellgren G, Nierop AF, Hochberg Z, Albertsson-Wikland K. *Proteome Sci.* 2009 Nov 2;7:40. 2. Apolipoprotein C1 association with Hepatitis C Virus. Meunier JC, Russell RS, Engle RH, Faulk KN, Purcell RH, Emerson SU. *J Virol.* 2008 Oct;82(19):9647-56. Epub 2008 Jul 30.