

**APOH Antibody (monoclonal) (M01)****Mouse monoclonal antibody raised against a partial recombinant APOH.****Catalog # AT1169a****Specification**

---

**APOH Antibody (monoclonal) (M01) - Product Information**

Application	WB
Primary Accession	<a href="#">P02749</a>
Other Accession	<a href="#">NM_000042</a>
Reactivity	Human
Host	mouse
Clonality	Monoclonal
Isotype	IgM Kappa
Calculated MW	38298

**APOH Antibody (monoclonal) (M01) - Additional Information****Gene ID** 350**Other Names**

Beta-2-glycoprotein 1, APC inhibitor, Activated protein C-binding protein, Anticardiolipin cofactor, Apolipoprotein H, Apo-H, Beta-2-glycoprotein I, B2GPI, Beta(2)GPI, APOH, B2G1

**Target/Specificity**

APOH (NP\_000033, 236 a.a. ~ 345 a.a) partial recombinant protein with GST tag. MW of the GST tag alone is 26 KDa.

**Dilution**

WB~~1:500~1000

**Format**

Clear, colorless solution in phosphate buffered saline, pH 7.2 .

**Storage**

Store at -20°C or lower. Aliquot to avoid repeated freezing and thawing.

**Precautions**

APOH Antibody (monoclonal) (M01) is for research use only and not for use in diagnostic or therapeutic procedures.

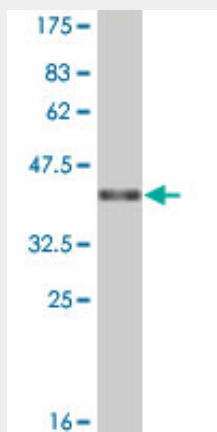
**APOH Antibody (monoclonal) (M01) - Protocols**

Provided below are standard protocols that you may find useful for product applications.

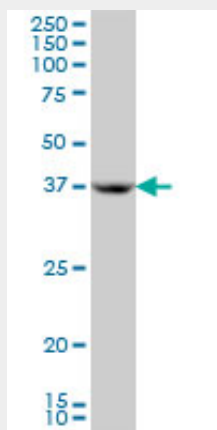
- [Western Blot](#)
- [Blocking Peptides](#)
- [Dot Blot](#)

- [Immunohistochemistry](#)
- [Immunofluorescence](#)
- [Immunoprecipitation](#)
- [Flow Cytometry](#)
- [Cell Culture](#)

#### **APOH Antibody (monoclonal) (M01) - Images**



Antibody Reactive Against Recombinant Protein. Western Blot detection against Immunogen (37.84 KDa) .



APOH monoclonal antibody (M01A), clone 3F10 Western Blot analysis of APOH expression in HL-60 ( (Cat # AT1169a )

#### **APOH Antibody (monoclonal) (M01) - Background**

Apolipoprotein H has been implicated in a variety of physiologic pathways including lipoprotein metabolism, coagulation, and the production of antiphospholipid autoantibodies. APOH may be a required cofactor for anionic phospholipid binding by the antiphospholipid autoantibodies found in sera of many patients with lupus and primary antiphospholipid syndrome, but it does not seem to be required for the reactivity of antiphospholipid autoantibodies associated with infections.

#### **APOH Antibody (monoclonal) (M01) - References**

Variation at the NFATC2 Locus Increases the Risk of Thiazolidinedione-Induced Edema in the Diabetes REduction Assessment with ramipril and rosiglitazone Medication (DREAM) Study. Bailey SD, et al. Diabetes Care, 2010 Jul 13. PMID 20628086. Physiogenomic analysis of statin-treated patients: domain-specific counter effects within the ACACB gene on low-density lipoprotein

cholesterol? Ruafo G, et al. Pharmacogenomics, 2010 Jul. PMID 20602615. TLR2 is one of the endothelial receptors for beta 2-glycoprotein I. Alard JE, et al. J Immunol, 2010 Aug 1. PMID 20601596. Chemical synthesis and characterization of wild-type and biotinylated N-terminal domain 1-64 of beta2-glycoprotein I. Pozzi N, et al. Protein Sci, 2010 May. PMID 20440842. New genetic associations detected in a host response study to hepatitis B vaccine. Davila S, et al. Genes Immun, 2010 Apr. PMID 20237496.