

APOM Antibody (monoclonal) (M01)

Mouse monoclonal antibody raised against a full length recombinant APOM.

Catalog # AT1171a

Specification

APOM Antibody (monoclonal) (M01) - Product Information

Application	WB, E
Primary Accession	O95445
Other Accession	BC020683
Reactivity	Human
Host	mouse
Clonality	Monoclonal
Isotype	IgG1
Calculated MW	21253

APOM Antibody (monoclonal) (M01) - Additional Information

Gene ID 55937

Other Names

Apolipoprotein M, Apo-M, ApoM, Protein G3a, APOM, G3A, NG20

Target/Specificity

APOM (AAH20683, 23 a.a. ~ 188 a.a) full-length recombinant protein with GST tag. MW of the GST tag alone is 26 KDa.

Dilution

WB~~1:500~1000

Format

Clear, colorless solution in phosphate buffered saline, pH 7.2 .

Storage

Store at -20°C or lower. Aliquot to avoid repeated freezing and thawing.

Precautions

APOM Antibody (monoclonal) (M01) is for research use only and not for use in diagnostic or therapeutic procedures.

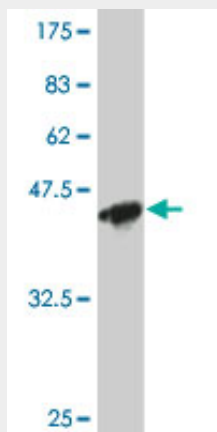
APOM Antibody (monoclonal) (M01) - Protocols

Provided below are standard protocols that you may find useful for product applications.

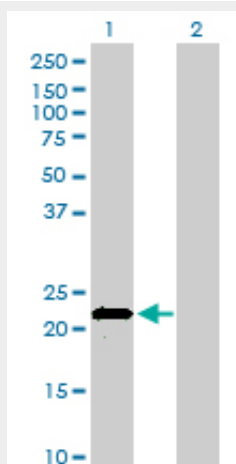
- [Western Blot](#)
- [Blocking Peptides](#)
- [Dot Blot](#)
- [Immunohistochemistry](#)

- [Immunofluorescence](#)
- [Immunoprecipitation](#)
- [Flow Cytometry](#)
- [Cell Culture](#)

APOM Antibody (monoclonal) (M01) - Images



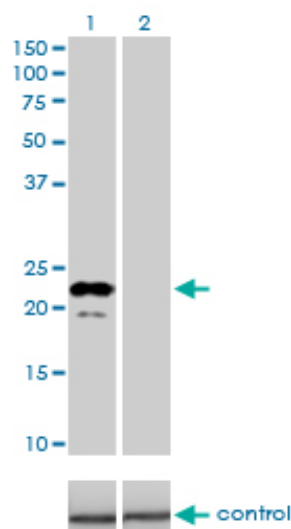
Antibody Reactive Against Recombinant Protein. Western Blot detection against Immunogen (44 kDa) .



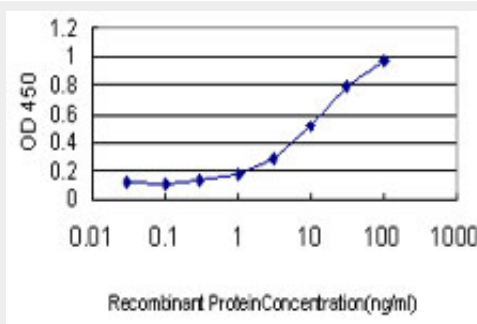
Western Blot analysis of APOM expression in transfected 293T cell line by APOM monoclonal antibody (M01), clone 1F10.

Lane 1: APOM transfected lysate(21.3 kDa).

Lane 2: Non-transfected lysate.



Western blot analysis of APOM over-expressed 293 cell line, cotransfected with APOM Validated Chimera RNAi (Cat # AT1171a)



Detection limit for recombinant GST tagged APOM is approximately 0.3ng/ml as a capture antibody.

APOM Antibody (monoclonal) (M01) - Background

The protein encoded by this gene is an apolipoprotein and member of the lipocalin protein family. It is found associated with high density lipoproteins and to a lesser extent with low density lipoproteins and triglyceride-rich lipoproteins. The encoded protein is secreted through the plasma membrane but remains membrane-bound, where it is involved in lipid transport. Two transcript variants encoding two different isoforms have been found for this gene, but only one of them has been fully characterized.

APOM Antibody (monoclonal) (M01) - References

1.Effects of simvastatin on apolipoprotein M in vivo and in vitro.Zhang X, Mao S, Luo G, Wei J, Berggren-Soderlund M, Nilsson-Ehle P, Xu N.Lipids Health Dis. 2011 Jul 5;10:112.2.Liver X receptor agonist downregulates hepatic apoM expression in vivo and in vitro.Zhang X, Zhu Z, Luo G, Zheng L, Nilsson-Ehle P, Xu N.Biochem Biophys Res Commun. 2008 Jun 20;371(1):114-7. Epub 2008 Apr 14.