

APOM Antibody (monoclonal) (M02)**Mouse monoclonal antibody raised against a full length recombinant APOM.****Catalog # AT1172a****Specification**

APOM Antibody (monoclonal) (M02) - Product Information

Application	WB, E
Primary Accession	O95445
Other Accession	BC020683
Reactivity	Human
Host	mouse
Clonality	Monoclonal
Isotype	IgG2b Kappa
Calculated MW	21253

APOM Antibody (monoclonal) (M02) - Additional Information**Gene ID** 55937**Other Names**

Apolipoprotein M, Apo-M, ApoM, Protein G3a, APOM, G3A, NG20

Target/Specificity

APOM (AAH20683, 23 a.a. ~ 188 a.a) full-length recombinant protein with GST tag. MW of the GST tag alone is 26 KDa.

Dilution

WB~~1:500~1000

E~~N/A

Format

Clear, colorless solution in phosphate buffered saline, pH 7.2 .

Storage

Store at -20°C or lower. Aliquot to avoid repeated freezing and thawing.

Precautions

APOM Antibody (monoclonal) (M02) is for research use only and not for use in diagnostic or therapeutic procedures.

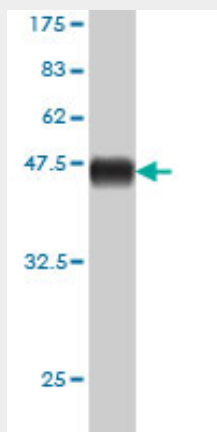
APOM Antibody (monoclonal) (M02) - Protocols

Provided below are standard protocols that you may find useful for product applications.

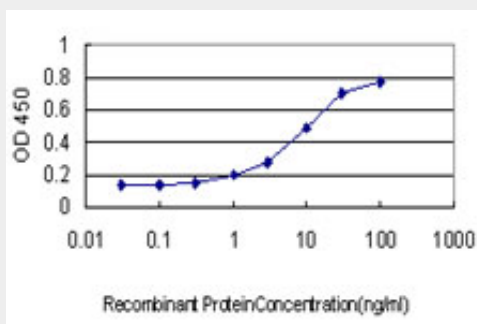
- [Western Blot](#)
- [Blocking Peptides](#)
- [Dot Blot](#)

- [Immunohistochemistry](#)
- [Immunofluorescence](#)
- [Immunoprecipitation](#)
- [Flow Cytometry](#)
- [Cell Culture](#)

APOM Antibody (monoclonal) (M02) - Images



Antibody Reactive Against Recombinant Protein. Western Blot detection against Immunogen (44 kDa) .



Detection limit for recombinant GST tagged APOM is approximately 0.3ng/ml as a capture antibody.

APOM Antibody (monoclonal) (M02) - Background

The protein encoded by this gene is an apolipoprotein and member of the lipocalin protein family. It is found associated with high density lipoproteins and to a lesser extent with low density lipoproteins and triglyceride-rich lipoproteins. The encoded protein is secreted through the plasma membrane but remains membrane-bound, where it is involved in lipid transport. Two transcript variants encoding two different isoforms have been found for this gene, but only one of them has been fully characterized.

APOM Antibody (monoclonal) (M02) - References

1. Apolipoprotein M Gene (APOM) Polymorphism Modifies Metabolic and Disease Traits in Type 2 Diabetes. Zhou JW, Tsui SK, Ng MC, Geng H, Li SK, So WY, Ma RC, Wang Y, Tao Q, Chen ZY, Chan JC, Ho YY. PLoS One. 2011 Feb 24;6(2):e17324.
2. Evaluation of apolipoprotein M as a biomarker of coronary artery disease. Jiao G, Yang C, Li J, Xiao M, Lin L, Xue Y, Ye Y. Clin Biochem. 2009 Mar;42(4-5):365-70. Epub 2008 Dec 3.