

**ARHGDIA Antibody (monoclonal) (M01)**

Mouse monoclonal antibody raised against a full length recombinant ARHGDIA.

Catalog # AT1181a

**Specification**

---

**ARHGDIA Antibody (monoclonal) (M01) - Product Information**

Application	E
Primary Accession	<a href="#">P52565</a>
Other Accession	<a href="#">BC016031</a>
Reactivity	Human
Host	mouse
Clonality	Monoclonal
Isotype	IgG1 Kappa
Calculated MW	23207

**ARHGDIA Antibody (monoclonal) (M01) - Additional Information**

**Gene ID** 396

**Other Names**

Rho GDP-dissociation inhibitor 1, Rho GDI 1, Rho-GDI alpha, ARHGDIA, GDIA1

**Target/Specificity**

ARHGDIA (AAH16031, 1 a.a. ~ 204 a.a) full-length recombinant protein with GST tag. MW of the GST tag alone is 26 KDa.

**Dilution**

E~~N/A

**Format**

Clear, colorless solution in phosphate buffered saline, pH 7.2 .

**Storage**

Store at -20°C or lower. Aliquot to avoid repeated freezing and thawing.

**Precautions**

ARHGDIA Antibody (monoclonal) (M01) is for research use only and not for use in diagnostic or therapeutic procedures.

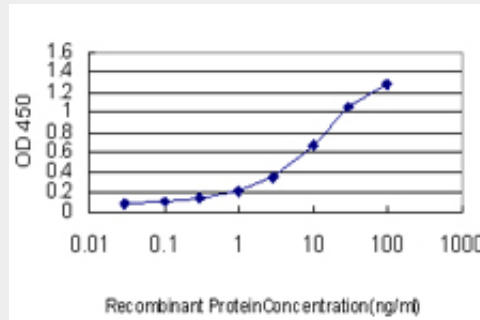
**ARHGDIA Antibody (monoclonal) (M01) - Protocols**

Provided below are standard protocols that you may find useful for product applications.

- [Western Blot](#)
- [Blocking Peptides](#)
- [Dot Blot](#)
- [Immunohistochemistry](#)

- [Immunofluorescence](#)
- [Immunoprecipitation](#)
- [Flow Cytometry](#)
- [Cell Culture](#)

### ARHGDI1 Antibody (monoclonal) (M01) - Images



Detection limit for recombinant GST tagged ARHGDI1 is approximately 0.3ng/ml as a capture antibody.

### ARHGDI1 Antibody (monoclonal) (M01) - Background

Aplysia Ras-related homologs (ARHs), also called Rho genes, belong to the RAS gene superfamily encoding small guanine nucleotide exchange (GTP/GDP) factors. The ARH proteins may be kept in the inactive, GDP-bound state by interaction with GDP dissociation inhibitors, such as ARHGDI1 (Leffers et al., 1993 [PubMed 8262133]).

### ARHGDI1 Antibody (monoclonal) (M01) - References

Serine 34 phosphorylation of rho guanine dissociation inhibitor (RhoGDIalpha) links signaling from conventional protein kinase C to RhoGTPase in cell adhesion. Dova A, et al. J Biol Chem, 2010 Jul 23. PMID 20472934. Regulation of Rho GTPase crosstalk, degradation and activity by RhoGDI1. Boulter E, et al. Nat Cell Biol, 2010 May. PMID 20400958. Sex-specific proteome differences in the anterior cingulate cortex of schizophrenia. Martins-de-Souza D, et al. J Psychiatr Res, 2010 Apr 8. PMID 20381070. Gain of miR-151 on chromosome 8q24.3 facilitates tumour cell migration and spreading through downregulating RhoGDI1. Ding J, et al. Nat Cell Biol, 2010 Apr. PMID 20305651. Rho GDP dissociation inhibitor alpha expression correlates with the outcome of CMF treatment in invasive ductal breast cancer. Ronneburg H, et al. Int J Oncol, 2010 Feb. PMID 20043072.