

ARHGEF1 Antibody (monoclonal) (M03)**Mouse monoclonal antibody raised against a partial recombinant ARHGEF1.****Catalog # AT1185a****Specification**

ARHGEF1 Antibody (monoclonal) (M03) - Product Information

Application	WB, IF, E
Primary Accession	O92888
Other Accession	BC034013
Reactivity	Human
Host	Mouse
Clonality	Monoclonal
Isotype	IgG2a Kappa
Calculated MW	102435

ARHGEF1 Antibody (monoclonal) (M03) - Additional Information**Gene ID** 9138**Other Names**

Rho guanine nucleotide exchange factor 1, 115 kDa guanine nucleotide exchange factor, p115-RhoGEF, p115RhoGEF, Sub15, ARHGEF1

Target/Specificity

ARHGEF1 (AAH34013.2, 830 a.a. ~ 927 a.a) partial recombinant protein with GST tag. MW of the GST tag alone is 26 KDa.

Dilution

WB~~1:500~1000

IF~~1:50~200

E~~N/A

Format

Clear, colorless solution in phosphate buffered saline, pH 7.2 .

Storage

Store at -20°C or lower. Aliquot to avoid repeated freezing and thawing.

Precautions

ARHGEF1 Antibody (monoclonal) (M03) is for research use only and not for use in diagnostic or therapeutic procedures.

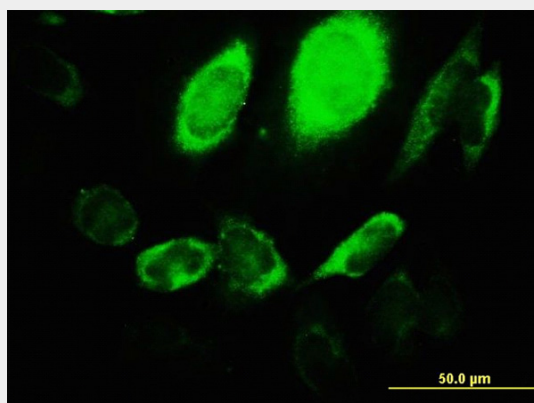
ARHGEF1 Antibody (monoclonal) (M03) - Protocols

Provided below are standard protocols that you may find useful for product applications.

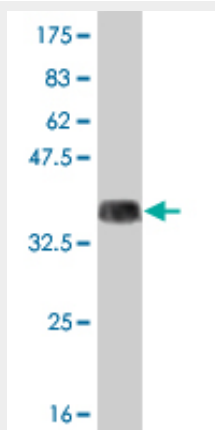
- [Western Blot](#)

- [Blocking Peptides](#)
- [Dot Blot](#)
- [Immunohistochemistry](#)
- [Immunofluorescence](#)
- [Immunoprecipitation](#)
- [Flow Cytometry](#)
- [Cell Culture](#)

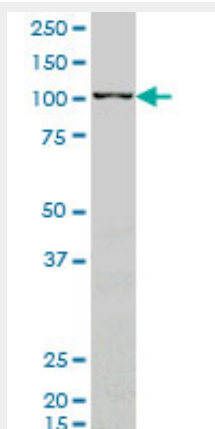
ARHGEF1 Antibody (monoclonal) (M03) - Images



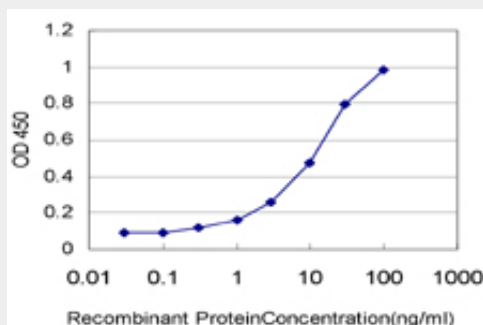
Immunofluorescence of monoclonal antibody to ARHGEF1 on HeLa cell. [antibody concentration 10 ug/ml]



Antibody Reactive Against Recombinant Protein. Western Blot detection against Immunogen (36.41 KDa) .



ARHGEF1 monoclonal antibody (M03), clone 4C4 Western Blot analysis of ARHGEF1 expression in K-562 ((Cat # AT1185a)



Detection limit for recombinant GST tagged ARHGEF1 is approximately 0.3ng/ml as a capture antibody.

ARHGEF1 Antibody (monoclonal) (M03) - Background

Rho GTPases play a fundamental role in numerous cellular processes that are initiated by extracellular stimuli that work through G protein coupled receptors. The encoded protein may form complex with G proteins and stimulate Rho-dependent signals. Multiple alternatively spliced transcript variants have been found for this gene, but the full-length nature of some variants has not been defined.

ARHGEF1 Antibody (monoclonal) (M03) - References

1. Loss of Isc/p115-protein leads to neuronal hypoplasia in the esophagus and an achalasia-like phenotype in mice. Ziser E, Beilke S, Bauerle T, Schilling K, Mohnle U, Adler G, Fischer KD, Wagner M. *Gastroenterology*. 2010 Jun 20. [Epub ahead of print]