

ARHGEF11 Antibody (monoclonal) (M02)**Mouse monoclonal antibody raised against a partial recombinant ARHGEF11.****Catalog # AT1186a****Specification**

ARHGEF11 Antibody (monoclonal) (M02) - Product Information

Application	WB, E
Primary Accession	O15085
Other Accession	BC057394
Reactivity	Human
Host	mouse
Clonality	Monoclonal
Isotype	IgG1 Kappa
Calculated MW	167704

ARHGEF11 Antibody (monoclonal) (M02) - Additional Information**Gene ID** 9826**Other Names**

Rho guanine nucleotide exchange factor 11, PDZ-RhoGEF, ARHGEF11, KIAA0380

Target/Specificity

ARHGEF11 (AAH57394, 651 a.a. ~ 750 a.a) partial recombinant protein with GST tag. MW of the GST tag alone is 26 KDa.

Dilution

WB~~1:500~1000

E~~N/A

Format

Clear, colorless solution in phosphate buffered saline, pH 7.2 .

Storage

Store at -20°C or lower. Aliquot to avoid repeated freezing and thawing.

Precautions

ARHGEF11 Antibody (monoclonal) (M02) is for research use only and not for use in diagnostic or therapeutic procedures.

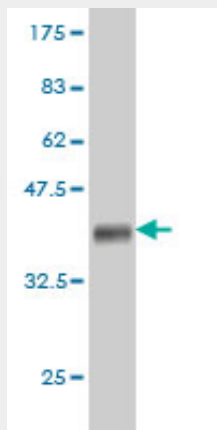
ARHGEF11 Antibody (monoclonal) (M02) - Protocols

Provided below are standard protocols that you may find useful for product applications.

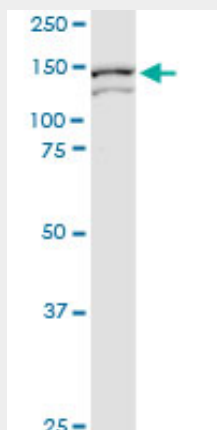
- [Western Blot](#)
- [Blocking Peptides](#)
- [Dot Blot](#)

- [Immunohistochemistry](#)
- [Immunofluorescence](#)
- [Immunoprecipitation](#)
- [Flow Cytometry](#)
- [Cell Culture](#)

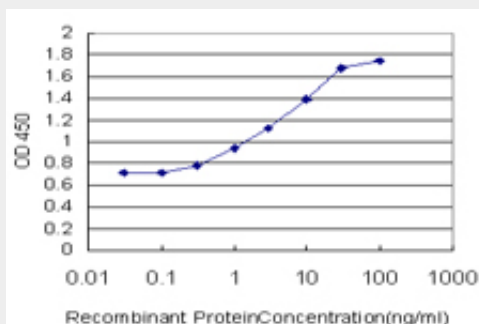
ARHGEF11 Antibody (monoclonal) (M02) - Images



Antibody Reactive Against Recombinant Protein. Western Blot detection against Immunogen (36.63 kDa) .



ARHGEF11 monoclonal antibody (M02), clone 2F4. Western Blot analysis of ARHGEF11 expression in human colon.



Detection limit for recombinant GST tagged ARHGEF11 is approximately 0.3 ng/ml as a capture antibody.

ARHGEF11 Antibody (monoclonal) (M02) - Background

Rho GTPases play a fundamental role in numerous cellular processes that are initiated by extracellular stimuli that work through G protein coupled receptors. The encoded protein may form a complex with G proteins and stimulate Rho-dependent signals. A similar protein in rat interacts with glutamate transporter EAAT4 and modulates its glutamate transport activity. Expression of the rat protein induces the reorganization of the actin cytoskeleton and its overexpression induces the formation of membrane ruffling and filopodia. Two alternative transcripts encoding different isoforms have been described.

ARHGEF11 Antibody (monoclonal) (M02) - References

Genome-wide association study to identify genetic variants present in Japanese patients harboring intracranial aneurysms. Akiyama K, et al. J Hum Genet, 2010 Jul 8. PMID 20613766. Personalized smoking cessation: interactions between nicotine dose, dependence and quit-success genotype score. Rose JE, et al. Mol Med, 2010 Jul-Aug. PMID 20379614. PYK2/PDZ-RhoGEF links Ca²⁺ signaling to RhoA. Ying Z, et al. Arterioscler Thromb Vasc Biol, 2009 Oct. PMID 19759375. The amino acid motif L/IlxxFE defines a novel actin-binding sequence in PDZ-RhoGEF. Banerjee J, et al. Biochemistry, 2009 Aug 25. PMID 19618964. On the mechanism of autoinhibition of the RhoA-specific nucleotide exchange factor PDZ-RhoGEF. Zheng M, et al. BMC Struct Biol, 2009 May 21. PMID 19460155.