

**ARRB2 Antibody (monoclonal) (M01)****Mouse monoclonal antibody raised against a partial recombinant ARRB2.****Catalog # AT1201a****Specification**

---

**ARRB2 Antibody (monoclonal) (M01) - Product Information**

Application	WB, IF, E
Primary Accession	<a href="#">P32121</a>
Other Accession	<a href="#">BC007427</a>
Reactivity	Human
Host	mouse
Clonality	Monoclonal
Isotype	IgG2a Kappa
Calculated MW	46106

**ARRB2 Antibody (monoclonal) (M01) - Additional Information****Gene ID** 409**Other Names**

Beta-arrestin-2, Arrestin beta-2, ARRB2, ARB2, ARR2

**Target/Specificity**

ARRB2 (AAH07427, 300 a.a. ~ 409 a.a) partial recombinant protein with GST tag. MW of the GST tag alone is 26 KDa.

**Dilution**

WB~~1:500~1000

IF~~1:50~200

E~~N/A

**Format**

Clear, colorless solution in phosphate buffered saline, pH 7.2 .

**Storage**

Store at -20°C or lower. Aliquot to avoid repeated freezing and thawing.

**Precautions**

ARRB2 Antibody (monoclonal) (M01) is for research use only and not for use in diagnostic or therapeutic procedures.

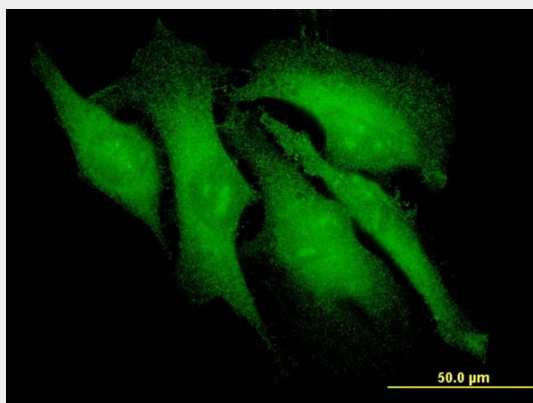
**ARRB2 Antibody (monoclonal) (M01) - Protocols**

Provided below are standard protocols that you may find useful for product applications.

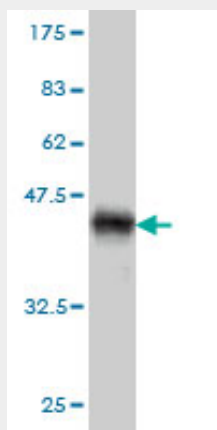
- [Western Blot](#)
- [Blocking Peptides](#)

- [Dot Blot](#)
- [Immunohistochemistry](#)
- [Immunofluorescence](#)
- [Immunoprecipitation](#)
- [Flow Cytometry](#)
- [Cell Culture](#)

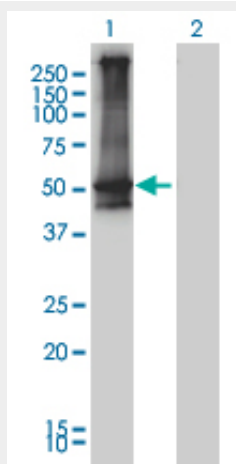
## ARRB2 Antibody (monoclonal) (M01) - Images



Immunofluorescence of monoclonal antibody to ARRB2 on HeLa cell . [antibody concentration 10 ug/ml]

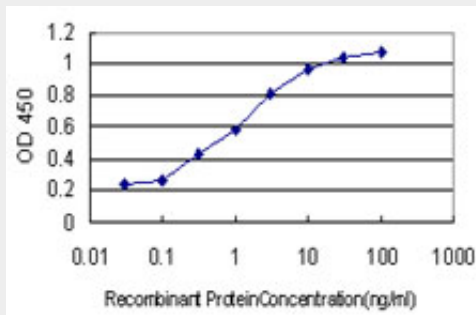


Antibody Reactive Against Recombinant Protein. Western Blot detection against Immunogen (37.84 KDa) .

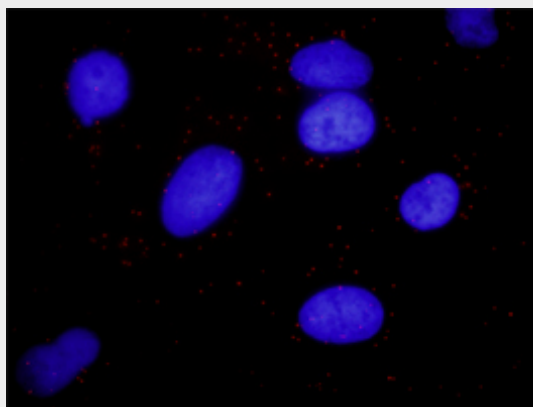


Western Blot analysis of ARRB2 expression in transfected 293T cell line by ARRB2 monoclonal antibody (M01), clone 3G1.

Lane 1: ARRB2 transfected lysate(46 KDa).  
Lane 2: Non-transfected lysate.



Detection limit for recombinant GST tagged ARRB2 is approximately 0.03ng/ml as a capture antibody.



Proximity Ligation Analysis of protein-protein interactions between MAPK3 and ARRB2. HeLa cells were stained with anti-MAPK3 rabbit purified polyclonal 1:1200 and anti-ARRB2 mouse monoclonal antibody 1:50. Each red dot represents the detection of protein-protein interaction complex, and nuclei were counterstained with DAPI (blue).

### **ARRB2 Antibody (monoclonal) (M01) - Background**

Members of arrestin/beta-arrestin protein family are thought to participate in agonist-mediated desensitization of G-protein-coupled receptors and cause specific dampening of cellular responses to stimuli such as hormones, neurotransmitters, or sensory signals. Arrestin beta 2, like arrestin beta 1, was shown to inhibit beta-adrenergic receptor function in vitro. It is expressed at high levels in the central nervous system and may play a role in the regulation of synaptic receptors. Besides the brain, a cDNA for arrestin beta 2 was isolated from thyroid gland, and thus it may also be involved in hormone-specific desensitization of TSH receptors. Multiple alternatively spliced transcript variants have been found for this gene, but the full-length nature of some variants has not been defined.

### **ARRB2 Antibody (monoclonal) (M01) - References**

beta-Arrestin2 influences the response to methadone in opioid-dependent patients. Oneda B, et al. Pharmacogenomics J, 2010 Jun 1. PMID 20514076. Beta-arrestin 2 regulates Toll-like receptor 4-mediated apoptotic signalling through glycogen synthase kinase-3beta. Li H, et al. Immunology, 2010 Aug. PMID 20497256. Preliminary evidence of ethnic divergence in associations of putative

genetic variants for methamphetamine dependence. Bousman CA, et al. Psychiatry Res, 2010 Jul 30. PMID 20478633. Beta-arrestin 2 is required for B1 receptor-dependent post-translational activation of inducible nitric oxide synthase. Kuhr FK, et al. FASEB J, 2010 Jul. PMID 20228252. Non-visual arrestins are constitutively associated with the centrosome and regulate centrosome function. Shankar H, et al. J Biol Chem, 2010 Mar 12. PMID 20056609.