

**ASPSCR1 Antibody (monoclonal) (M01)****Mouse monoclonal antibody raised against a full length recombinant ASPSCR1.****Catalog # AT1219a****Specification**

---

**ASPSCR1 Antibody (monoclonal) (M01) - Product Information**

Application	WB, IHC
Primary Accession	<a href="#">Q9BZE9</a>
Other Accession	<a href="#">BC018722</a>
Reactivity	Human
Host	mouse
Clonality	Monoclonal
Isotype	IgG1 kappa
Calculated MW	60183

**ASPSCR1 Antibody (monoclonal) (M01) - Additional Information****Gene ID** 79058**Other Names**

Tether containing UBX domain for GLUT4, Alveolar soft part sarcoma chromosomal region candidate gene 1 protein, Alveolar soft part sarcoma locus, Renal papillary cell carcinoma protein 17, UBX domain-containing protein 9, ASPSCR1, ASPL, RCC17, TUG, UBXD9, UBXN9

**Target/Specificity**

ASPSCR1 (AAH18722, 1 a.a. ~ 553 a.a) full-length recombinant protein with GST tag. MW of the GST tag alone is 26 KDa.

**Dilution**

WB~~1:500~1000

IHC~~1:100~500

**Format**

Clear, colorless solution in phosphate buffered saline, pH 7.2 .

**Storage**

Store at -20°C or lower. Aliquot to avoid repeated freezing and thawing.

**Precautions**

ASPSCR1 Antibody (monoclonal) (M01) is for research use only and not for use in diagnostic or therapeutic procedures.

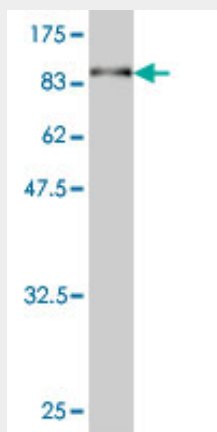
**ASPSCR1 Antibody (monoclonal) (M01) - Protocols**

Provided below are standard protocols that you may find useful for product applications.

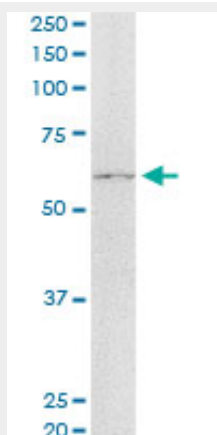
- [Western Blot](#)

- [Blocking Peptides](#)
- [Dot Blot](#)
- [Immunohistochemistry](#)
- [Immunofluorescence](#)
- [Immunoprecipitation](#)
- [Flow Cytometry](#)
- [Cell Culture](#)

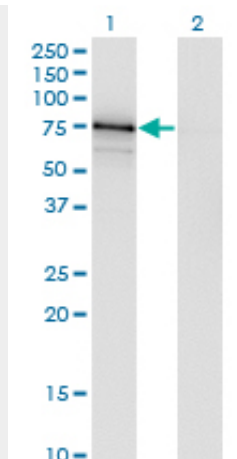
#### ASPSCR1 Antibody (monoclonal) (M01) - Images



Antibody Reactive Against Recombinant Protein. Western Blot detection against Immunogen (86.57 KDa) .



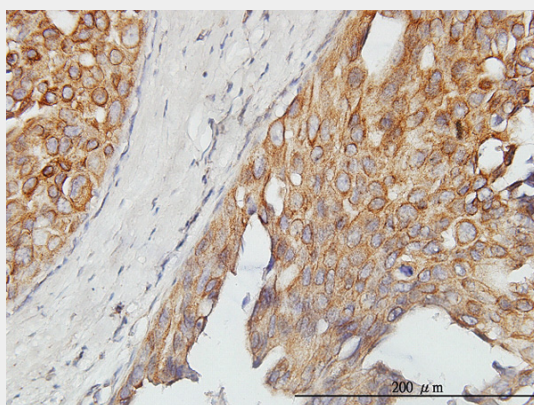
ASPSCR1 monoclonal antibody (M01), clone 3D10-1D11. Western Blot analysis of ASPSCR1 expression in HepG2.



Western Blot analysis of ASPSCR1 expression in transfected 293T cell line by ASPSCR1 monoclonal antibody (M01), clone 3D10-1D11.

Lane 1: ASPSCR1 transfected lysate (Predicted MW: 60.2 KDa).

Lane 2: Non-transfected lysate.



Immunoperoxidase of monoclonal antibody to ASPSCR1 on formalin-fixed paraffin-embedded human breast cancer. [antibody concentration 3 ug/ml]

#### **ASPSCR1 Antibody (monoclonal) (M01) - Background**

This gene is a candidate gene for alveolar soft part sarcoma (ASPS). It has been found that this gene is fused with transcription factor TFE3 gene in ASPS and also in renal cell carcinomas. Several alternatively spliced transcript variants of this gene have been described, but their full length nature has not been determined.

#### **ASPSCR1 Antibody (monoclonal) (M01) - References**

Identification of type 2 diabetes-associated combination of SNPs using support vector machine. Ban HJ, et al. BMC Genet, 2010 Apr 23. PMID 20416077. UBXD7 binds multiple ubiquitin ligases and implicates p97 in HIF1alpha turnover. Alexandru G, et al. Cell, 2008 Sep 5. PMID 18775313. Immunohistochemical discrimination between the ASPL-TFE3 fusion proteins of alveolar soft part sarcoma. Vistica DT, et al. J Pediatr Hematol Oncol, 2008 Jan. PMID 18176180. Global, in vivo, and site-specific phosphorylation dynamics in signaling networks. Olsen JV, et al. Cell, 2006 Nov 3. PMID 17081983. The status, quality, and expansion of the NIH full-length cDNA project: the Mammalian Gene Collection (MGC). Gerhard DS, et al. Genome Res, 2004 Oct. PMID 15489334.