

**AXIN1 Antibody (monoclonal) (M01)****Mouse monoclonal antibody raised against a partial recombinant AXIN1.****Catalog # AT1249a****Specification**

---

**AXIN1 Antibody (monoclonal) (M01) - Product Information**

Application	WB, IF, E
Primary Accession	<a href="#">O15169</a>
Other Accession	<a href="#">NM_003502</a>
Reactivity	Human
Host	mouse
Clonality	Monoclonal
Isotype	IgG2a Kappa
Calculated MW	95635

**AXIN1 Antibody (monoclonal) (M01) - Additional Information****Gene ID** 8312**Other Names**

Axin-1, Axis inhibition protein 1, hAxin, AXIN1, AXIN

**Target/Specificity**

AXIN1 (NP\_003493, 643 a.a. ~ 740 a.a) partial recombinant protein with GST tag. MW of the GST tag alone is 26 KDa.

**Dilution**

WB~~1:500~1000

IF~~1:50~200

E~~N/A

**Format**

Clear, colorless solution in phosphate buffered saline, pH 7.2 .

**Storage**

Store at -20°C or lower. Aliquot to avoid repeated freezing and thawing.

**Precautions**

AXIN1 Antibody (monoclonal) (M01) is for research use only and not for use in diagnostic or therapeutic procedures.

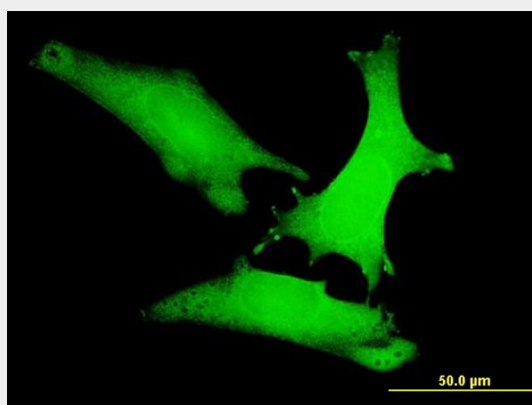
**AXIN1 Antibody (monoclonal) (M01) - Protocols**

Provided below are standard protocols that you may find useful for product applications.

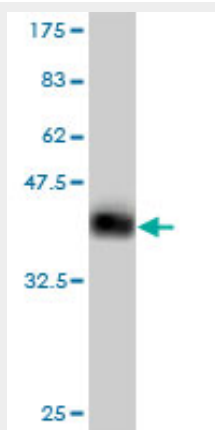
- [Western Blot](#)
- [Blocking Peptides](#)

- [Dot Blot](#)
- [Immunohistochemistry](#)
- [Immunofluorescence](#)
- [Immunoprecipitation](#)
- [Flow Cytometry](#)
- [Cell Culture](#)

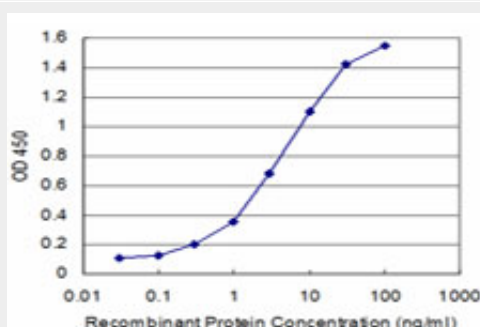
## AXIN1 Antibody (monoclonal) (M01) - Images



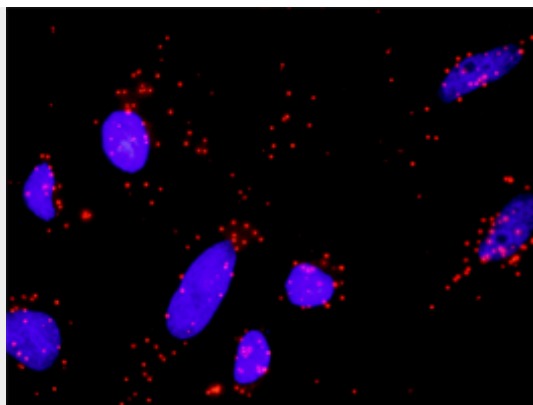
Immunofluorescence of monoclonal antibody to AXIN1 on HeLa cell . [antibody concentration 10 ug/ml]



Antibody Reactive Against Recombinant Protein. Western Blot detection against Immunogen (36.52 KDa) .



Detection limit for recombinant GST tagged AXIN1 is approximately 0.3ng/ml as a capture antibody.



Proximity Ligation Analysis of protein-protein interactions between GSK3B and AXIN1 HeLa cells were stained with anti-GSK3B rabbit purified polyclonal 1:1200 and anti-AXIN1 mouse monoclonal antibody 1:50. Each red dot represents the detection of protein-protein interaction complex, and nuclei were counterstained with DAPI (blue).

#### **AXIN1 Antibody (monoclonal) (M01) - Background**

This gene encodes a cytoplasmic protein which contains a regulation of G-protein signaling (RGS) domain and a dishevelled and axin (DIX) domain. The encoded protein interacts with adenomatous polyposis coli, catenin (cadherin-associated protein), beta 1, 88kDa, glycogen synthase kinase 3 beta, protein phosphate 2, and itself. This protein functions as a negative regulator of the wingless-type MMTV integration site family, member 1 (WNT) signaling pathway and can induce apoptosis. The crystal structure of a portion of this protein, alone and in a complex with other proteins, has been resolved. Mutations in this gene have been associated with hepatocellular carcinoma, hepatoblastomas, ovarian endometrioid adenocarcinomas, and medullablastomas. Two transcript variants encoding distinct isoforms have been identified for this gene.

#### **AXIN1 Antibody (monoclonal) (M01) - References**

Variation at the NFATC2 Locus Increases the Risk of Thiazolinedinedione-Induced Edema in the Diabetes REduction Assessment with ramipril and rosiglitazone Medication (DREAM) Study. Bailey SD, et al. Diabetes Care, 2010 Jul 13. PMID 20628086. Personalized smoking cessation: interactions between nicotine dose, dependence and quit-success genotype score. Rose JE, et al. Mol Med, 2010 Jul-Aug. PMID 20379614. MAP3K1 functionally interacts with Axin1 in the canonical Wnt signalling pathway. Sue Ng S, et al. Biol Chem, 2010 Feb-Mar. PMID 20128690. Axin downregulates TCF-4 transcription via beta-catenin, but not p53, and inhibits the proliferation and invasion of lung cancer cells. Yang LH, et al. Mol Cancer, 2010 Feb 2. PMID 20122174. Application of gene network analysis techniques identifies AXIN1/PDIA2 and endoglin haplotypes associated with bicuspid aortic valve. Wooten EC, et al. PLoS One, 2010 Jan 21. PMID 20098615.

#### **AXIN1 Antibody (monoclonal) (M01) - Citations**

- [AHSA1 regulates proliferation, apoptosis, migration, and invasion of osteosarcoma.](#)