

BAZ1B Antibody (monoclonal) (M01)**Mouse monoclonal antibody raised against a partial recombinant BAZ1B.****Catalog # AT1274a****Specification**

BAZ1B Antibody (monoclonal) (M01) - Product Information

Application	IHC, E
Primary Accession	O9UIG0
Other Accession	NM_023005
Reactivity	Human
Host	mouse
Clonality	Monoclonal
Isotype	IgG2a Kappa
Calculated MW	170903

BAZ1B Antibody (monoclonal) (M01) - Additional Information**Gene ID** 9031**Other Names**

Tyrosine-protein kinase BAZ1B, Bromodomain adjacent to zinc finger domain protein 1B, Williams syndrome transcription factor, Williams-Beuren syndrome chromosomal region 10 protein, Williams-Beuren syndrome chromosomal region 9 protein, hWALp2, BAZ1B, WBSC10, WBSCR10, WBSCR9, WSTF

Target/Specificity

BAZ1B (NP_075381, 1384 a.a. ~ 1483 a.a) partial recombinant protein with GST tag. MW of the GST tag alone is 26 KDa.

Dilution

IHC~~1:100~500

E~~N/A

Format

Clear, colorless solution in phosphate buffered saline, pH 7.2 .

Storage

Store at -20°C or lower. Aliquot to avoid repeated freezing and thawing.

Precautions

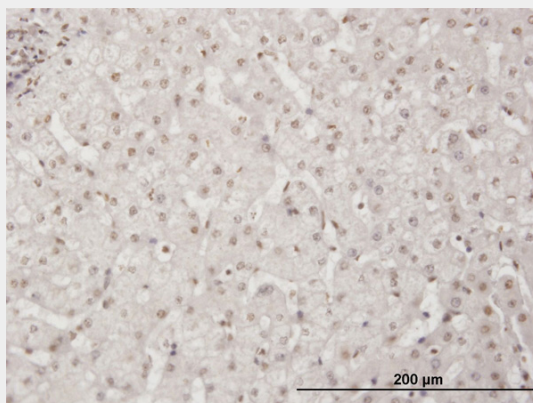
BAZ1B Antibody (monoclonal) (M01) is for research use only and not for use in diagnostic or therapeutic procedures.

BAZ1B Antibody (monoclonal) (M01) - Protocols

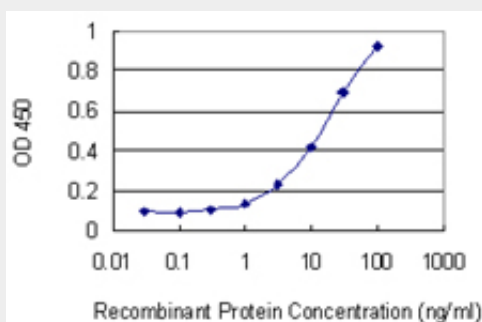
Provided below are standard protocols that you may find useful for product applications.

- [Western Blot](#)
- [Blocking Peptides](#)
- [Dot Blot](#)
- [Immunohistochemistry](#)
- [Immunofluorescence](#)
- [Immunoprecipitation](#)
- [Flow Cytometry](#)
- [Cell Culture](#)

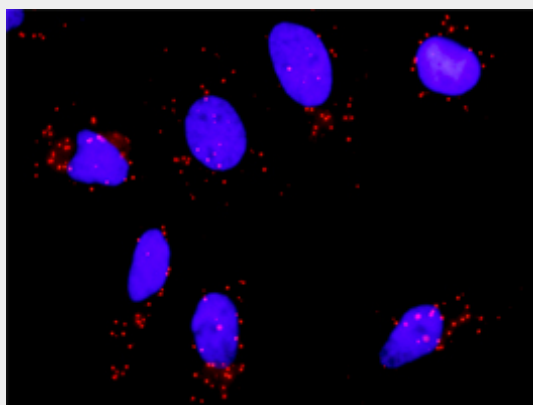
BAZ1B Antibody (monoclonal) (M01) - Images



Immunoperoxidase of monoclonal antibody to BAZ1B on formalin-fixed paraffin-embedded human liver. [antibody concentration 3 ug/ml]

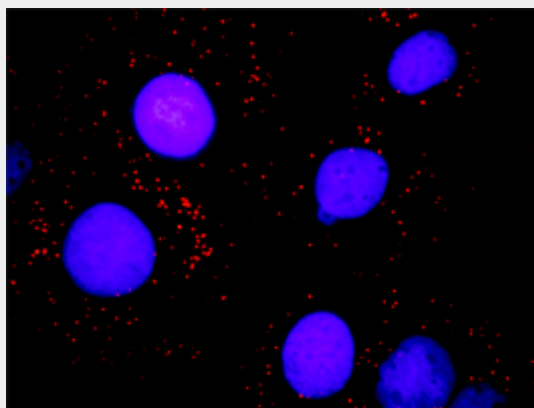


Detection limit for recombinant GST tagged BAZ1B is 0.3 ng/ml as a capture antibody.



Proximity Ligation Analysis of protein-protein interactions between SMARCB1 and BAZ1B HeLa cells were stained with anti-SMARCB1 rabbit purified polyclonal 1:1200 and anti-BAZ1B mouse monoclonal antibody 1:50. Each red dot represents the detection of protein-protein interaction

complex, and nuclei were counterstained with DAPI (blue).



Proximity Ligation Analysis of protein-protein interactions between SMARCB1 and BAZ1B. Huh7 cells were stained with anti-SMARCB1 rabbit purified polyclonal 1:1200 and anti-BAZ1B mouse monoclonal antibody 1:50. Each red dot represents the detection of protein-protein interaction complex, and nuclei were counterstained with DAPI (blue).

BAZ1B Antibody (monoclonal) (M01) - Background

This gene encodes a member of the bromodomain protein family. The bromodomain is a structural motif characteristic of proteins involved in chromatin-dependent regulation of transcription. This gene is deleted in Williams-Beuren syndrome, a developmental disorder caused by deletion of multiple genes at 7q11.23. [provided by RefSeq]