

BCAP31 Antibody (monoclonal) (M01)**Mouse monoclonal antibody raised against a partial recombinant BCAP31.****Catalog # AT1277a****Specification**

BCAP31 Antibody (monoclonal) (M01) - Product Information

Application	WB
Primary Accession	P51572
Other Accession	NM_005745
Reactivity	Human
Host	mouse
Clonality	Monoclonal
Isotype	IgG1 Kappa
Calculated MW	27992

BCAP31 Antibody (monoclonal) (M01) - Additional Information**Gene ID** 10134**Other Names**

B-cell receptor-associated protein 31, BCR-associated protein 31, Bap31, 6C6-AG tumor-associated antigen, Protein CDM, p28, BCAP31, BAP31, DXS1357E

Target/Specificity

BCAP31 (NP_005736, 137 a.a. ~ 246 a.a) partial recombinant protein with GST tag. MW of the GST tag alone is 26 KDa.

Dilution

WB~~1:500~1000

Format

Clear, colorless solution in phosphate buffered saline, pH 7.2 .

Storage

Store at -20°C or lower. Aliquot to avoid repeated freezing and thawing.

Precautions

BCAP31 Antibody (monoclonal) (M01) is for research use only and not for use in diagnostic or therapeutic procedures.

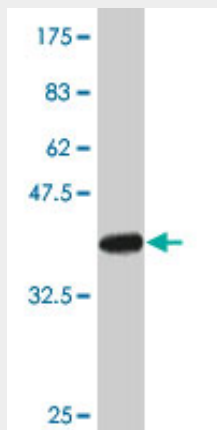
BCAP31 Antibody (monoclonal) (M01) - Protocols

Provided below are standard protocols that you may find useful for product applications.

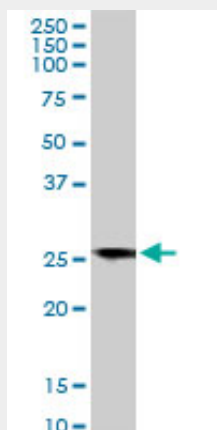
- [Western Blot](#)
- [Blocking Peptides](#)
- [Dot Blot](#)

- [Immunohistochemistry](#)
- [Immunofluorescence](#)
- [Immunoprecipitation](#)
- [Flow Cytometry](#)
- [Cell Culture](#)

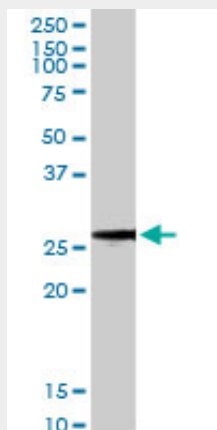
BCAP31 Antibody (monoclonal) (M01) - Images



Antibody Reactive Against Recombinant Protein. Western Blot detection against Immunogen (37.84 kDa) .



BCAP31 monoclonal antibody (M01), clone 3C5. Western Blot analysis of BCAP31 expression in human kidney.



BCAP31 monoclonal antibody (M01), clone 3C5. Western Blot analysis of BCAP31 expression in HeLa((Cat # AT1277a)

BCAP31 Antibody (monoclonal) (M01) - Background

This gene encodes a member of the B-cell receptor associated protein 31 superfamily. The encoded protein is a multi-pass transmembrane protein of the endoplasmic reticulum that is involved in the anterograde transport of membrane proteins from the endoplasmic reticulum to the Golgi and in the caspase 8-mediated apoptosis. Microdeletions in this gene are associated with the contiguous ABCD1/DXS1375E deletion syndrome. Two pseudogenes have been identified on chromosome 16. Alternatively spliced transcript variants encoding distinct isoforms have been described although the biological validity of some of the variants has not been determined.

BCAP31 Antibody (monoclonal) (M01) - References

Bap31 is a novel target of the human papillomavirus E5 protein. Regan JA, et al. J Virol, 2008 Oct. PMID 18684816. BAP31 interacts with Sec61 translocons and promotes retrotranslocation of CFTRDeltaF508 via the derlin-1 complex. Wang B, et al. Cell, 2008 Jun 13. PMID 18555783. Bap31 is an itinerant protein that moves between the peripheral endoplasmic reticulum (ER) and a juxtanuclear compartment related to ER-associated Degradation. Wakana Y, et al. Mol Biol Cell, 2008 May. PMID 18287538. Toward a confocal subcellular atlas of the human proteome. Barbe L, et al. Mol Cell Proteomics, 2008 Mar. PMID 18029348. Bap31 enhances the endoplasmic reticulum export and quality control of human class I MHC molecules. Ladasky JJ, et al. J Immunol, 2006 Nov 1. PMID 17056546.