

**BCL11A Antibody (monoclonal) (M03)****Mouse monoclonal antibody raised against a partial recombinant BCL11A.****Catalog # AT1281a****Specification**

---

**BCL11A Antibody (monoclonal) (M03) - Product Information**

Application	WB, IHC, IF, E
Primary Accession	<a href="#">O9H165</a>
Other Accession	<a href="#">NM_018014</a>
Reactivity	Human
Host	mouse
Clonality	Monoclonal
Isotype	IgG2a Kappa
Calculated MW	91197

**BCL11A Antibody (monoclonal) (M03) - Additional Information****Gene ID** 53335**Other Names**

B-cell lymphoma/leukemia 11A, BCL-11A, B-cell CLL/lymphoma 11A, COUP-TF-interacting protein 1, Ecotropic viral integration site 9 protein homolog, EVI-9, Zinc finger protein 856, BCL11A, CTIP1, EVI9, KIAA1809, ZNF856

**Target/Specificity**

BCL11A (NP\_060484, 1 a.a. ~ 88 a.a) partial recombinant protein with GST tag. MW of the GST tag alone is 26 kDa.

**Dilution**

WB~~1:500~1000

IHC~~1:100~500

IF~~1:50~200

E~~N/A

**Format**

Clear, colorless solution in phosphate buffered saline, pH 7.2 .

**Storage**

Store at -20°C or lower. Aliquot to avoid repeated freezing and thawing.

**Precautions**

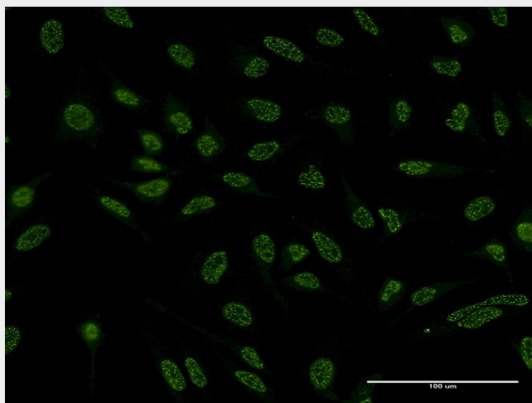
BCL11A Antibody (monoclonal) (M03) is for research use only and not for use in diagnostic or therapeutic procedures.

**BCL11A Antibody (monoclonal) (M03) - Protocols**

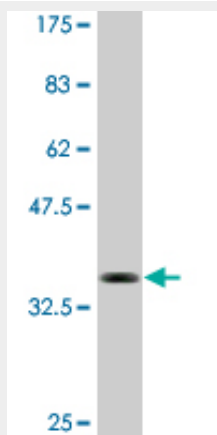
Provided below are standard protocols that you may find useful for product applications.

- [Western Blot](#)
- [Blocking Peptides](#)
- [Dot Blot](#)
- [Immunohistochemistry](#)
- [Immunofluorescence](#)
- [Immunoprecipitation](#)
- [Flow Cytometry](#)
- [Cell Culture](#)

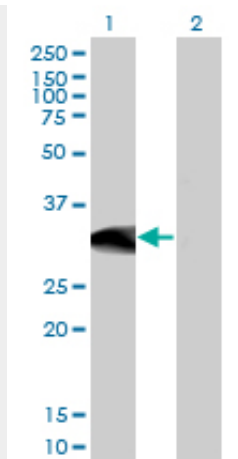
#### **BCL11A Antibody (monoclonal) (M03) - Images**



Immunofluorescence of monoclonal antibody to BCL11A on HeLa cell . [antibody concentration 10 ug/ml]



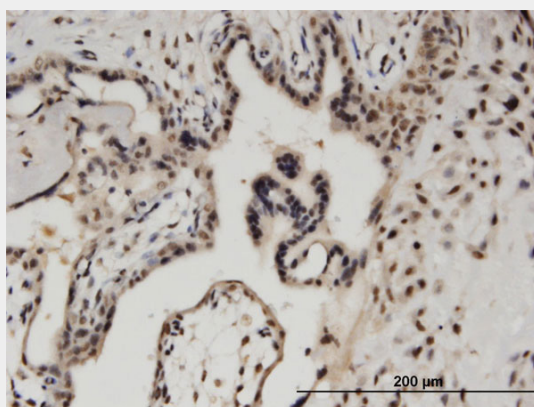
Antibody Reactive Against Recombinant Protein. Western Blot detection against Immunogen (35.42 KDa) .



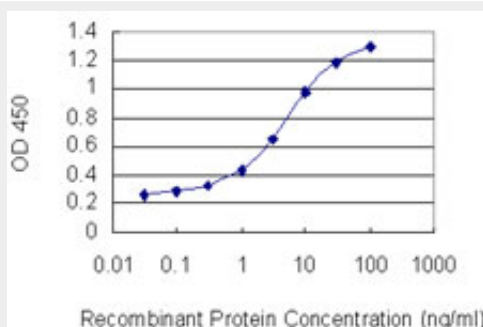
Western Blot analysis of BCL11A expression in transfected 293T cell line by BCL11A monoclonal antibody (M03), clone 3D9.

Lane 1: BCL11A transfected lysate(26.865 KDa).

Lane 2: Non-transfected lysate.



Immunoperoxidase of monoclonal antibody to BCL11A on formalin-fixed paraffin-embedded human placenta. [antibody concentration 3 ug/ml]



Detection limit for recombinant GST tagged BCL11A is 0.03 ng/ml as a capture antibody.

### **BCL11A Antibody (monoclonal) (M03) - Background**

This gene encodes a C2H2 type zinc-finger protein by its similarity to the mouse Bcl11a/Evi9 protein. The corresponding mouse gene is a common site of retroviral integration in myeloid leukemia, and may function as a leukemia disease gene, in part, through its interaction with BCL6. During hematopoietic cell differentiation, this gene is down-regulated. It is possibly involved in lymphoma pathogenesis since translocations associated with B-cell malignancies also deregulates

its expression. Multiple transcript variants encoding several different isoforms have been found for this gene.

### **BCL11A Antibody (monoclonal) (M03) - References**

Variation at the NFATC2 Locus Increases the Risk of Thiazolinedinedione-Induced Edema in the Diabetes REduction Assessment with ramipril and rosiglitazone Medication (DREAM) Study. Bailey SD, et al. Diabetes Care, 2010 Jul 13. PMID 20628086.14q32/miRNA clusters loss of heterozygosity in acute lymphoblastic leukemia is associated with up-regulation of BCL11a. Agueli C, et al. Am J Hematol, 2010 Aug. PMID 20578197. Analysis of the REL, BCL11A, and MYCN proto-oncogenes belonging to the 2p amplicon in chronic lymphocytic leukemia. Deambrogi C, et al. Am J Hematol, 2010 Jul. PMID 20575024. The XmnI (G)gamma polymorphism influences hemoglobin F synthesis contrary to BCL11A and HBS1L-MYB SNPs in a cohort of 57 beta-thalassemia intermedia patients. Nguyen TK, et al. Blood Cells Mol Dis, 2010 Aug 15. PMID 20472475. Transcriptional silencing of {gamma}-globin by BCL11A involves long-range interactions and cooperation with SOX6. Xu J, et al. Genes Dev, 2010 Apr 15. PMID 20395365.