

BCL2L12 Antibody (monoclonal) (M01)**Mouse monoclonal antibody raised against a partial recombinant BCL2L12.****Catalog # AT1283a****Specification**

BCL2L12 Antibody (monoclonal) (M01) - Product Information

Application	WB, IF
Primary Accession	O9HB09
Other Accession	BC007724
Reactivity	Human
Host	mouse
Clonality	Monoclonal
Isotype	IgG1 Kappa
Calculated MW	26908

BCL2L12 Antibody (monoclonal) (M01) - Additional Information**Gene ID** 83596**Other Names**

Bcl-2-like protein 12, Bcl2-L-12, Bcl-2-related proline-rich protein, BCL2L12, BPR

Target/Specificity

BCL2L12 (AAH07724, 174 a.a. ~ 273 a.a) partial recombinant protein with GST tag. MW of the GST tag alone is 26 KDa.

Dilution

WB~~1:500~1000

IF~~1:50~200

Format

Clear, colorless solution in phosphate buffered saline, pH 7.2 .

Storage

Store at -20°C or lower. Aliquot to avoid repeated freezing and thawing.

Precautions

BCL2L12 Antibody (monoclonal) (M01) is for research use only and not for use in diagnostic or therapeutic procedures.

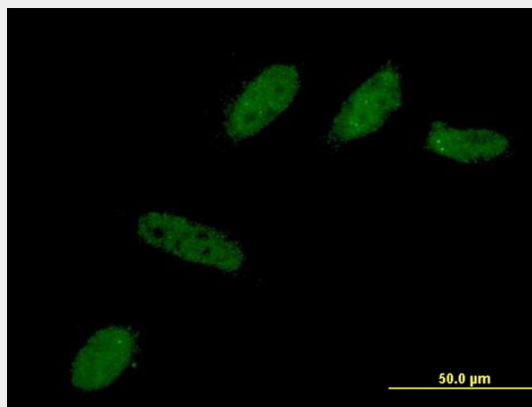
BCL2L12 Antibody (monoclonal) (M01) - Protocols

Provided below are standard protocols that you may find useful for product applications.

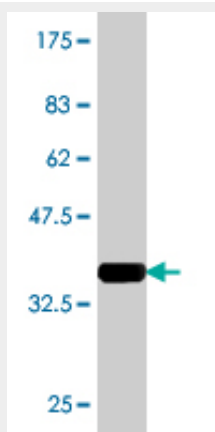
- [Western Blot](#)
- [Blocking Peptides](#)
- [Dot Blot](#)

- [Immunohistochemistry](#)
- [Immunofluorescence](#)
- [Immunoprecipitation](#)
- [Flow Cytometry](#)
- [Cell Culture](#)

BCL2L12 Antibody (monoclonal) (M01) - Images



Immunofluorescence of monoclonal antibody to BCL2L12 on HeLa cell . [antibody concentration 10 ug/ml]



Antibody Reactive Against Recombinant Protein. Western Blot detection against Immunogen (36.63 KDa) .

BCL2L12 Antibody (monoclonal) (M01) - Background

The protein encoded by this gene belongs to the BCL-2 protein family. BCL-2 family members form hetero- or homodimers and act as anti- or pro-apoptotic regulators that are involved in a wide variety of cellular activities. This protein contains a Bcl-2 homology domain 2 (BH2). The function of this gene has not yet been determined. Two alternatively spliced transcript variants of this gene encoding distinct isoforms have been reported.

BCL2L12 Antibody (monoclonal) (M01) - References

Variation at the NFATC2 Locus Increases the Risk of Thiazolidinedione-Induced Edema in the Diabetes REduction Assessment with ramipril and rosiglitazone Medication (DREAM) Study. Bailey SD, et al. Diabetes Care, 2010 Jul 13. PMID 20628086. Gene-centric association signals for lipids and apolipoproteins identified via the HumanCVD BeadChip. Talmud PJ, et al. Am J Hum Genet, 2009 Nov. PMID 19913121. Molecular analysis and prognostic impact of the novel apoptotic gene

BCL2L12 in gastric cancer. Florou D, et al. Biochem Biophys Res Commun, 2010 Jan 1. PMID 19903463. BCL2L12A localizes to the cell nucleus and induces growth inhibition through G2/M arrest in CHO cells. Hong Y, et al. Mol Cell Biochem, 2010 Jan. PMID 19763795. Molecular response of HL-60 cells to mitotic inhibitors vincristine and taxol visualized with apoptosis-related gene expressions, including the new member BCL2L12. Thomadaki H, et al. Ann N Y Acad Sci, 2009 Aug. PMID 19723066.