

BCL7B Antibody (monoclonal) (M01)**Mouse monoclonal antibody raised against a partial recombinant BCL7B.****Catalog # AT1284a****Specification**

BCL7B Antibody (monoclonal) (M01) - Product Information

Application	WB, IF, E
Primary Accession	O9BQE9
Other Accession	NM_001707
Reactivity	Human
Host	mouse
Clonality	Monoclonal
Isotype	IgG1 Kappa
Calculated MW	22195

BCL7B Antibody (monoclonal) (M01) - Additional Information**Gene ID** 9275**Other Names**

B-cell CLL/lymphoma 7 protein family member B, Hom s 3, BCL7B

Target/Specificity

BCL7B (NP_001698, 124 a.a. ~ 202 a.a) partial recombinant protein with GST tag. MW of the GST tag alone is 26 KDa.

Dilution

WB~~1:500~1000

IF~~1:50~200

E~~N/A

Format

Clear, colorless solution in phosphate buffered saline, pH 7.2 .

Storage

Store at -20°C or lower. Aliquot to avoid repeated freezing and thawing.

Precautions

BCL7B Antibody (monoclonal) (M01) is for research use only and not for use in diagnostic or therapeutic procedures.

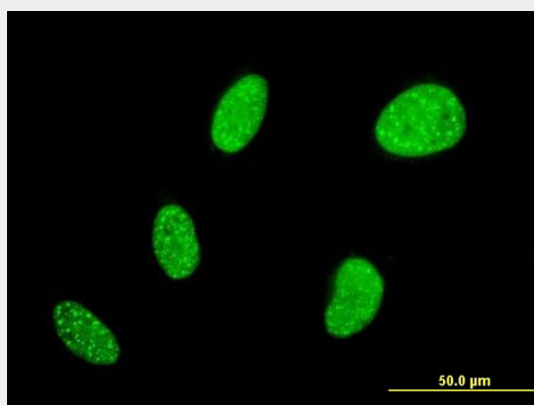
BCL7B Antibody (monoclonal) (M01) - Protocols

Provided below are standard protocols that you may find useful for product applications.

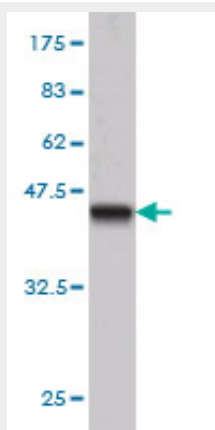
- [Western Blot](#)
- [Blocking Peptides](#)

- [Dot Blot](#)
- [Immunohistochemistry](#)
- [Immunofluorescence](#)
- [Immunoprecipitation](#)
- [Flow Cytometry](#)
- [Cell Culture](#)

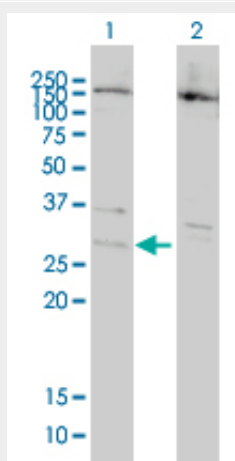
BCL7B Antibody (monoclonal) (M01) - Images



Immunofluorescence of monoclonal antibody to BCL7B on HeLa cell . [antibody concentration 10 ug/ml]



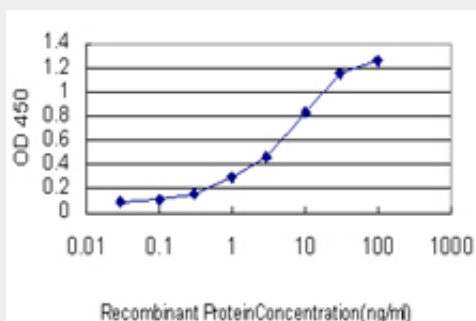
Antibody Reactive Against Recombinant Protein. Western Blot detection against Immunogen (34.43 KDa) .



Western Blot analysis of BCL7B expression in transfected 293T cell line by BCL7B monoclonal antibody (M01), clone 6D2.

Lane 1: BCL7B transfected lysate(22 KDa).

Lane 2: Non-transfected lysate.



Detection limit for recombinant GST tagged BCL7B is approximately 0.1ng/ml as a capture antibody.

BCL7B Antibody (monoclonal) (M01) - Background

The protein encoded by this gene contains a region that is highly similar to the N-terminal segment of BCL7A protein. The BCL7A protein is encoded by the gene known to be directly involved in a three-way gene translocation in a Burkitt lymphoma cell line. This gene is located at a chromosomal region commonly deleted in Williams syndrome. The function of this gene has not yet been determined.

BCL7B Antibody (monoclonal) (M01) - References

Evaluating the discriminative power of multi-trait genetic risk scores for type 2 diabetes in a northern Swedish population. Fontaine-Bisson B, et al. Diabetologia, 2010 Oct. PMID 20571754. Six new loci associated with blood low-density lipoprotein cholesterol, high-density lipoprotein cholesterol or triglycerides in humans. Kathiresan S, et al. Nat Genet, 2008 Feb. PMID 18193044. Newly identified loci that influence lipid concentrations and risk of coronary artery disease. Willer CJ, et al. Nat Genet, 2008 Feb. PMID 18193043. The status, quality, and expansion of the NIH full-length cDNA project: the Mammalian Gene Collection (MGC). Gerhard DS, et al. Genome Res, 2004 Oct. PMID 15489334. Complete sequencing and characterization of 21,243 full-length human cDNAs. Ota T, et al. Nat Genet, 2004 Jan. PMID 14702039.