

BDNF Antibody (monoclonal) (M02)

Mouse monoclonal antibody raised against a full-length recombinant BDNF.

Catalog # AT1290a

Specification

BDNF Antibody (monoclonal) (M02) - Product Information

Application	WB, IF, IP
Primary Accession	P23560
Other Accession	BC029795
Reactivity	Human
Host	mouse
Clonality	Monoclonal
Isotype	IgG2a Kappa
Calculated MW	27818

BDNF Antibody (monoclonal) (M02) - Additional Information

Gene ID 627

Other Names

Brain-derived neurotrophic factor, BDNF, Abrineurin, BDNF

Target/Specificity

BDNF (AAH29795, 1 a.a. ~ 247 a.a) full-length recombinant protein with GST tag. MW of the GST tag alone is 26 KDa.

Dilution

WB~~1:500~1000

IF~~1:50~200

IP~~N/A

Format

Clear, colorless solution in phosphate buffered saline, pH 7.2 .

Storage

Store at -20°C or lower. Aliquot to avoid repeated freezing and thawing.

Precautions

BDNF Antibody (monoclonal) (M02) is for research use only and not for use in diagnostic or therapeutic procedures.

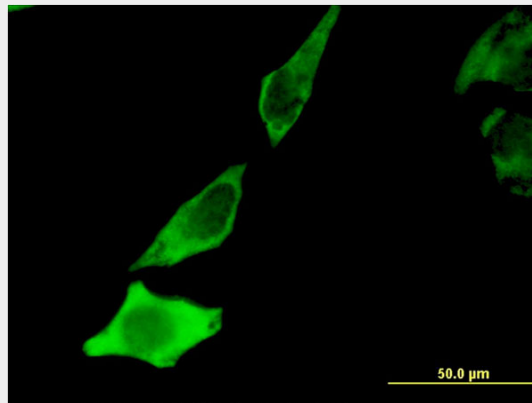
BDNF Antibody (monoclonal) (M02) - Protocols

Provided below are standard protocols that you may find useful for product applications.

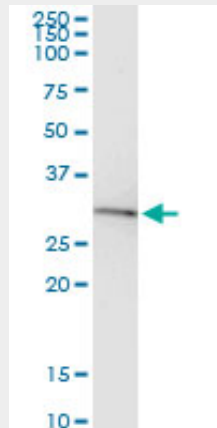
- [Western Blot](#)
- [Blocking Peptides](#)

- [Dot Blot](#)
- [Immunohistochemistry](#)
- [Immunofluorescence](#)
- [Immunoprecipitation](#)
- [Flow Cytometry](#)
- [Cell Culture](#)

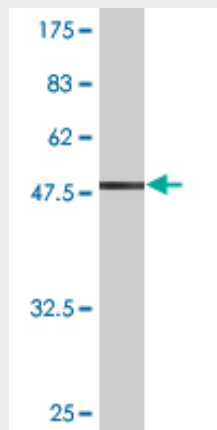
BDNF Antibody (monoclonal) (M02) - Images



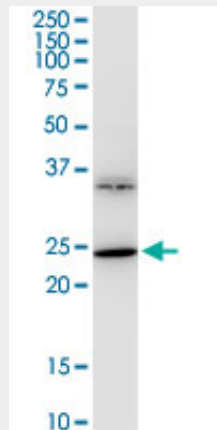
Immunofluorescence of monoclonal antibody to BDNF on HeLa cell . [antibody concentration 10 ug/ml]



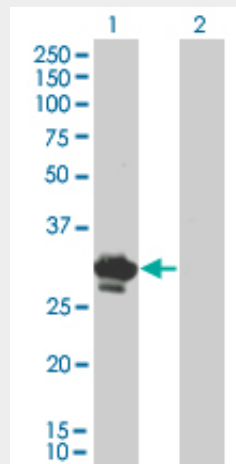
Immunoprecipitation of BDNF transfected lysate using anti-BDNF monoclonal antibody and Protein A Magnetic Bead ([U0007](#)), and immunoblotted with BDNF monoclonal antibody.



Antibody Reactive Against Recombinant Protein. Western Blot detection against Immunogen (52.91 KDa) .



BDNF monoclonal antibody (M02), clone 1B10. Western Blot analysis of BDNF expression in IMR-32.



Western Blot analysis of BDNF expression in transfected 293T cell line by BDNF monoclonal antibody (M02), clone 1B10.

Lane 1: BDNF transfected lysate(28.9 KDa).
Lane 2: Non-transfected lysate.