

**BHLHB2 Antibody (monoclonal) (M01)****Mouse monoclonal antibody raised against a partial recombinant BHLHB2.****Catalog # AT1297a****Specification**

---

**BHLHB2 Antibody (monoclonal) (M01) - Product Information**

Application	WB, E
Primary Accession	<a href="#">O14503</a>
Other Accession	<a href="#">NM_003670</a>
Reactivity	Human, Mouse
Host	mouse
Clonality	Monoclonal
Isotype	IgG2b Kappa
Calculated MW	45510

**BHLHB2 Antibody (monoclonal) (M01) - Additional Information****Gene ID** 8553**Other Names**

Class E basic helix-loop-helix protein 40, bHLHe40, Class B basic helix-loop-helix protein 2, bHLHb2, Differentially expressed in chondrocytes protein 1, DEC1, Enhancer-of-split and hairy-related protein 2, SHARP-2, Stimulated by retinoic acid gene 13 protein, BHLHE40, BHLHB2, DEC1, SHARP2, STRA13

**Target/Specificity**

BHLHB2 (NP\_003661, 130 a.a. ~ 229 a.a) partial recombinant protein with GST tag. MW of the GST tag alone is 26 KDa.

**Dilution**

WB~~1:500~1000

E~~N/A

**Format**

Clear, colorless solution in phosphate buffered saline, pH 7.2 .

**Storage**

Store at -20°C or lower. Aliquot to avoid repeated freezing and thawing.

**Precautions**

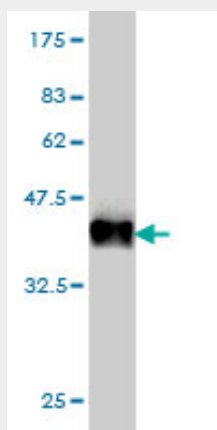
BHLHB2 Antibody (monoclonal) (M01) is for research use only and not for use in diagnostic or therapeutic procedures.

**BHLHB2 Antibody (monoclonal) (M01) - Protocols**

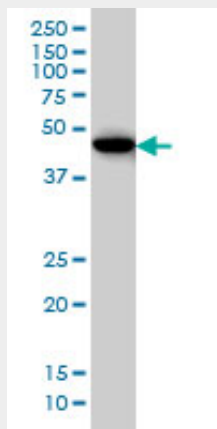
Provided below are standard protocols that you may find useful for product applications.

- [Western Blot](#)
- [Blocking Peptides](#)
- [Dot Blot](#)
- [Immunohistochemistry](#)
- [Immunofluorescence](#)
- [Immunoprecipitation](#)
- [Flow Cytometry](#)
- [Cell Culture](#)

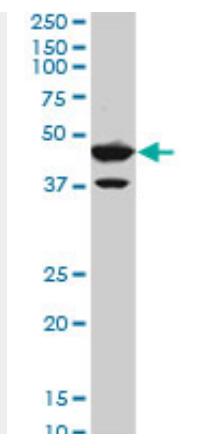
#### **BHLHB2 Antibody (monoclonal) (M01) - Images**



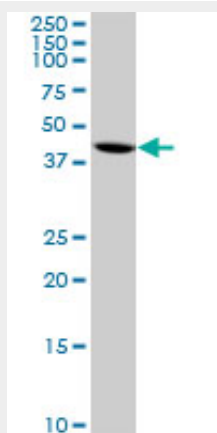
Antibody Reactive Against Recombinant Protein. Western Blot detection against Immunogen (36.74 KDa) .



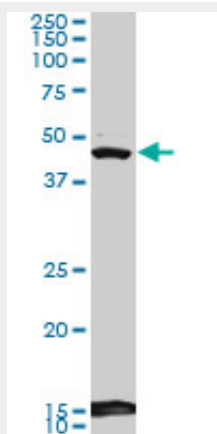
BHLHB2 monoclonal antibody (M01), clone 5B1 Western Blot analysis of BHLHB2 expression in HepG2 ( (Cat # AT1297a )



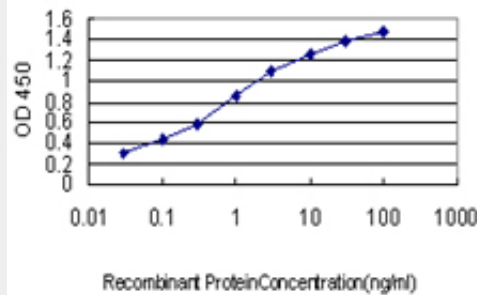
BHLHB2 monoclonal antibody (M01), clone 5B1. Western Blot analysis of BHLHB2 expression in HeLa S3 NE ( (Cat # AT1297a )



BHLHB2 monoclonal antibody (M01), clone 5B1. Western Blot analysis of BHLHB2 expression in Raw 264.7 ( (Cat # AT1297a )



BHLHB2 monoclonal antibody (M01), clone 5B1. Western Blot analysis of BHLHB2 expression in NIH/3T3 ( (Cat # AT1297a )



Detection limit for recombinant GST tagged BHLHB2 is approximately 0.03ng/ml as a capture antibody.

### **BHLHB2 Antibody (monoclonal) (M01) - Background**

This gene encodes a basic helix-loop-helix protein expressed in various tissues. Expression in the chondrocytes is responsive to the addition of Bt2cAMP. The encoded protein is believed to be involved in the control of cell differentiation.

### **BHLHB2 Antibody (monoclonal) (M01) - References**

1. A new role for SREBP-1 transcription factors in the regulation of muscle mass and muscle cell differentiation. Lecomte V, Meugnier E, Euthine V, Durand C, Freyssenet D, Nemoz G, Rome S, Vidal H, Lefai E. Mol Cell Biol. 2009 Dec 22. [Epub ahead of print]