

BLR1 Antibody (monoclonal) (M01)**Mouse monoclonal antibody raised against a partial recombinant CXCR5.****Catalog # AT1301a****Specification**

BLR1 Antibody (monoclonal) (M01) - Product Information

Application	WB, E
Primary Accession	P32302
Other Accession	NM_001716
Reactivity	Human
Host	mouse
Clonality	Monoclonal
Isotype	IgG2a Kappa
Calculated MW	41955

BLR1 Antibody (monoclonal) (M01) - Additional Information**Gene ID** 643**Other Names**C-X-C chemokine receptor type 5, CXC-R5, CXCR-5, Burkitt lymphoma receptor 1,
Monocyte-derived receptor 15, MDR-15, CD185, CXCR5, BLR1, MDR15**Target/Specificity**

CXCR5 (NP_001707, 1 a.a. ~ 56 a.a) partial recombinant protein with GST tag. MW of the GST tag alone is 26 KDa.

Dilution

WB~~1:500~1000

E~~N/A

Format

Clear, colorless solution in phosphate buffered saline, pH 7.2 .

Storage

Store at -20°C or lower. Aliquot to avoid repeated freezing and thawing.

Precautions

BLR1 Antibody (monoclonal) (M01) is for research use only and not for use in diagnostic or therapeutic procedures.

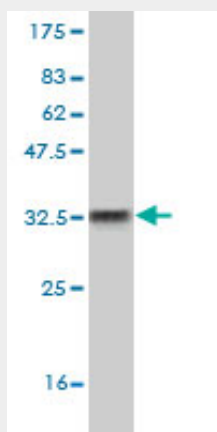
BLR1 Antibody (monoclonal) (M01) - Protocols

Provided below are standard protocols that you may find useful for product applications.

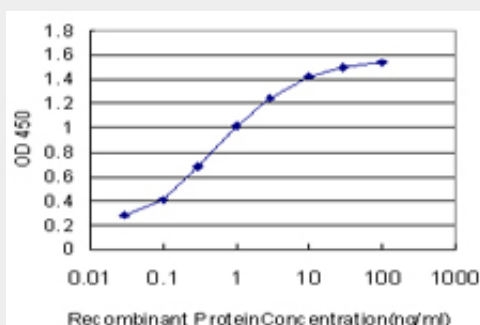
- [Western Blot](#)
- [Blocking Peptides](#)

- [Dot Blot](#)
- [Immunohistochemistry](#)
- [Immunofluorescence](#)
- [Immunoprecipitation](#)
- [Flow Cytometry](#)
- [Cell Culture](#)

BLR1 Antibody (monoclonal) (M01) - Images



Antibody Reactive Against Recombinant Protein. Western Blot detection against Immunogen (32.16 KDa) .



Detection limit for recombinant GST tagged BLR1 is approximately 0.03ng/ml as a capture antibody.

BLR1 Antibody (monoclonal) (M01) - Background

This gene was identified as a gene specifically expressed in Burkitt's lymphoma and lymphatic tissues. The protein encoded by this gene is predicted to be a seven transmembrane G protein-coupled receptor and belongs to the CXC chemokine receptor family. BLC, a B-lymphocyte chemoattractant, was identified to be a specific ligand for this receptor. Studies of this gene and its mouse counterpart strongly suggest the essential function of this gene in B cell migration and localization within specific anatomic compartments, such as follicles in lymph nodes as well as in spleen. Two alternatively spliced variants of this gene exist.

BLR1 Antibody (monoclonal) (M01) - References

Variation at the NFATC2 Locus Increases the Risk of Thiazolidinedione-Induced Edema in the Diabetes REduction Assessment with ramipril and rosiglitazone Medication (DREAM) Study. Bailey SD, et al. Diabetes Care, 2010 Jul 13. PMID 20628086. PI3Kp110-, Src-, FAK-dependent and DOCK2-independent migration and invasion of CXCL13-stimulated prostate cancer cells. El Haibi CP, et al. Mol Cancer, 2010 Apr 22. PMID 20412587. Serum BLC/CXCL13 concentrations and renal

expression of CXCL13/CXCR5 in patients with systemic lupus erythematosus and lupus nephritis. Lee HT, et al. J Rheumatol, 2010 Jan. PMID 19955043. Gene-centric association signals for lipids and apolipoproteins identified via the HumanCVD BeadChip. Talmud PJ, et al. Am J Hum Genet, 2009 Nov. PMID 19913121. Clinical and biological significance of CXCR5 expressed by prostate cancer specimens and cell lines. Singh S, et al. Int J Cancer, 2009 Nov 15. PMID 19610059.