

BUB1B Antibody (monoclonal) (M01)

Mouse monoclonal antibody raised against a partial recombinant BUB1B.

Catalog # AT1320a

Specification

BUB1B Antibody (monoclonal) (M01) - Product Information

Application	IF, WB, IHC
Primary Accession	O60566
Other Accession	BC018739
Reactivity	Human
Host	mouse
Clonality	Monoclonal
Isotype	IgG1 Kappa
Calculated MW	119545

BUB1B Antibody (monoclonal) (M01) - Additional Information

Gene ID 701

Other Names

Mitotic checkpoint serine/threonine-protein kinase BUB1 beta, MAD3/BUB1-related protein kinase, hBUBR1, Mitotic checkpoint kinase MAD3L, Protein SSK1, BUB1B, BUBR1, MAD3L, SSK1

Target/Specificity

BUB1B (AAH18739, 1 a.a. ~ 130 a.a) partial recombinant protein with GST tag. MW of the GST tag alone is 26 KDa.

Dilution

WB~~1:500~1000

Format

Clear, colorless solution in phosphate buffered saline, pH 7.2 .

Storage

Store at -20°C or lower. Aliquot to avoid repeated freezing and thawing.

Precautions

BUB1B Antibody (monoclonal) (M01) is for research use only and not for use in diagnostic or therapeutic procedures.

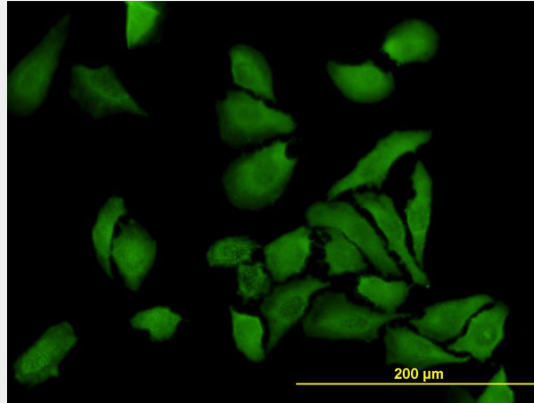
BUB1B Antibody (monoclonal) (M01) - Protocols

Provided below are standard protocols that you may find useful for product applications.

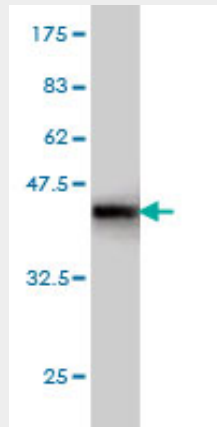
- [Western Blot](#)
- [Blocking Peptides](#)
- [Dot Blot](#)

- [Immunohistochemistry](#)
- [Immunofluorescence](#)
- [Immunoprecipitation](#)
- [Flow Cytometry](#)
- [Cell Culture](#)

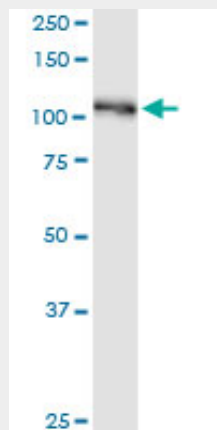
BUB1B Antibody (monoclonal) (M01) - Images



Immunofluorescence of monoclonal antibody to BUB1B on HeLa cell. [antibody concentration 10 ug/ml]

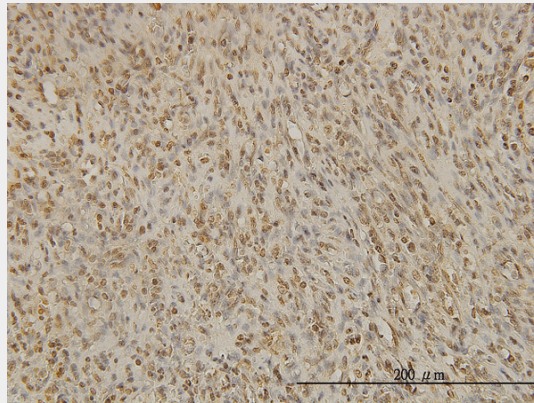


Antibody Reactive Against Recombinant Protein. Western Blot detection against Immunogen (39.93 KDa) .



BUB1B monoclonal antibody (M01), clone 2G9. Western Blot analysis of BUB1B expression in

human spleen.



Immunoperoxidase of monoclonal antibody to BUB1B on formalin-fixed paraffin-embedded human spleen. [antibody concentration 1 ug/ml]

BUB1B Antibody (monoclonal) (M01) - Background

This gene encodes a kinase involved in spindle checkpoint function. The protein has been localized to the kinetochore and plays a role in the inhibition of the anaphase-promoting complex/cyclosome (APC/C), delaying the onset of anaphase and ensuring proper chromosome segregation. Impaired spindle checkpoint function has been found in many forms of cancer.

BUB1B Antibody (monoclonal) (M01) - References

Molecular causes for BUBR1 dysfunction in the human cancer predisposition syndrome mosaic variegated aneuploidy. Suijkerbuijk SJ, et al. *Cancer Res*, 2010 Jun 15. PMID 20516114. Spindle proteins in resected pancreatic head adenocarcinomas: BubR1 is an independent prognostic factor in pancreatobiliary-type tumours. Gladhaug IP, et al. *Histopathology*, 2010 Feb. PMID 20459534. A Large-scale genetic association study of esophageal adenocarcinoma risk. Liu CY, et al. *Carcinogenesis*, 2010 Jul. PMID 20453000. BUBR1 expression in benign oral lesions and squamous cell carcinomas: correlation with human papillomavirus. Lira RC, et al. *Oncol Rep*, 2010 Apr. PMID 20204288. LSD1 is required for chromosome segregation during mitosis. Lv S, et al. *Eur J Cell Biol*, 2010 Jul. PMID 20189264.