

**C21orf33 Antibody (monoclonal) (M01)**

Mouse monoclonal antibody raised against a partial recombinant C21orf33.

Catalog # AT1343a

**Specification**

---

**C21orf33 Antibody (monoclonal) (M01) - Product Information**

Application	WB, IHC, IF, E
Primary Accession	<a href="#">P30042</a>
Other Accession	<a href="#">NM_004649</a>
Reactivity	Human
Host	mouse
Clonality	Monoclonal
Isotype	IgG1 Kappa

**C21orf33 Antibody (monoclonal) (M01) - Additional Information****Other Names**

ES1 protein homolog, mitochondrial, Protein GT335, Protein KNP-I, C21orf33, HES1, KNPI

**Target/Specificity**

C21orf33 (NP\_004640, 188 a.a. ~ 268 a.a) partial recombinant protein with GST tag. MW of the GST tag alone is 26 KDa.

**Dilution**

WB~~1:500~1000

IHC~~1:100~500

IF~~1:50~200

E~~N/A

**Format**

Clear, colorless solution in phosphate buffered saline, pH 7.2 .

**Storage**

Store at -20°C or lower. Aliquot to avoid repeated freezing and thawing.

**Precautions**

C21orf33 Antibody (monoclonal) (M01) is for research use only and not for use in diagnostic or therapeutic procedures.

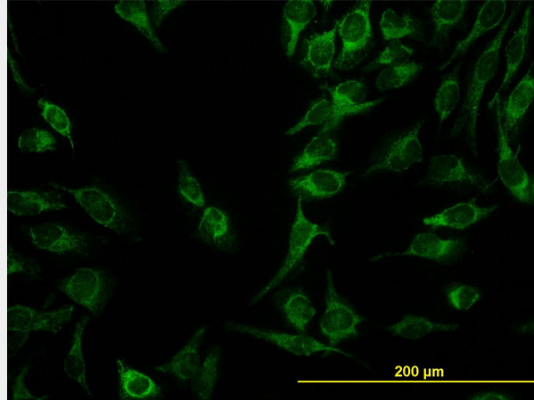
**C21orf33 Antibody (monoclonal) (M01) - Protocols**

Provided below are standard protocols that you may find useful for product applications.

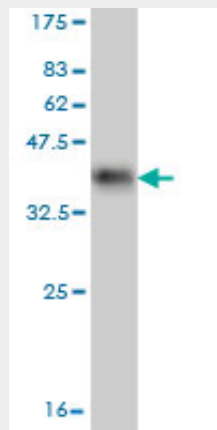
- [Western Blot](#)
- [Blocking Peptides](#)
- [Dot Blot](#)
- [Immunohistochemistry](#)
- [Immunofluorescence](#)

- [Immunoprecipitation](#)
- [Flow Cytometry](#)
- [Cell Culture](#)

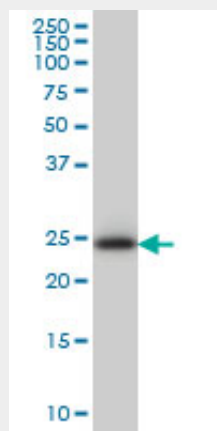
### C21orf33 Antibody (monoclonal) (M01) - Images



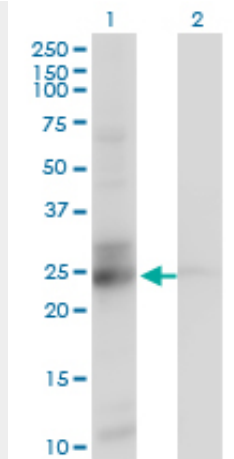
Immunofluorescence of monoclonal antibody to C21orf33 on HeLa cell. [antibody concentration 10 ug/ml]



Antibody Reactive Against Recombinant Protein. Western Blot detection against Immunogen (34.65 KDa) .

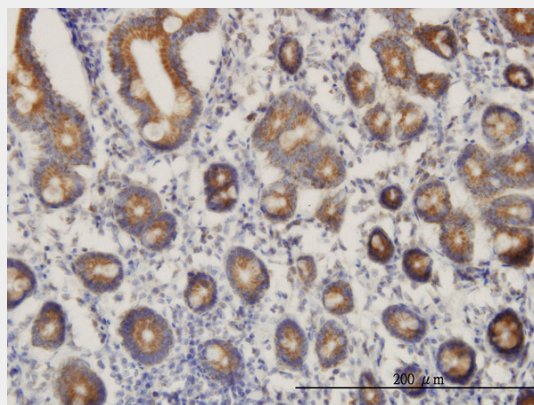


C21orf33 monoclonal antibody (M01), clone 1F5 Western Blot analysis of C21orf33 expression in HeLa ( (Cat # AT1343a )

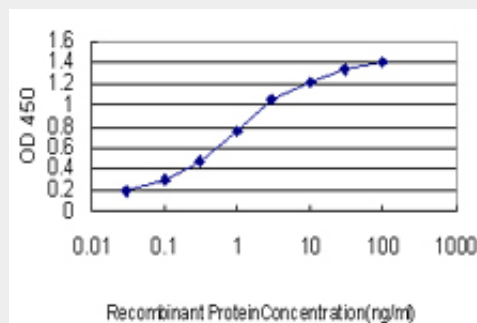


Western Blot analysis of C21orf33 expression in transfected 293T cell line by C21orf33 monoclonal antibody (M01), clone 1F5.

Lane 1: C21orf33 transfected lysate(28.1 KDa).  
 Lane 2: Non-transfected lysate.



Immunoperoxidase of monoclonal antibody to C21orf33 on formalin-fixed paraffin-embedded human small Intestine. [antibody concentration 3 ug/ml]



Detection limit for recombinant GST tagged C21orf33 is approximately 0.03ng/ml as a capture antibody.

### C21orf33 Antibody (monoclonal) (M01) - Background

This gene encodes a potential mitochondrial protein that is a member of the DJ-1/Pfpl gene family. This protein is overexpressed in fetal Down syndrome brain. Alternate splicing results in multiple transcript variants.

### **C21orf33 Antibody (monoclonal) (M01) - References**

A human protein-protein interaction network: a resource for annotating the proteome. Stelzl U, et al. Cell, 2005 Sep 23. PMID 16169070. The status, quality, and expansion of the NIH full-length cDNA project: the Mammalian Gene Collection (MGC). Gerhard DS, et al. Genome Res, 2004 Oct. PMID 15489334. Sequence comparison of human and mouse genes reveals a homologous block structure in the promoter regions. Suzuki Y, et al. Genome Res, 2004 Sep. PMID 15342556. Expression of cystathionine beta-synthase, pyridoxal kinase, and ES1 protein homolog (mitochondrial precursor) in fetal Down syndrome brain. Shin JH, et al. Neurochem Int, 2004 Jul. PMID 15082224. Generation and initial analysis of more than 15,000 full-length human and mouse cDNA sequences. Strausberg RL, et al. Proc Natl Acad Sci U S A, 2002 Dec 24. PMID 12477932.