

C22orf18 Antibody (monoclonal) (M01)

Mouse monoclonal antibody raised against a full length recombinant C22orf18.

Catalog # AT1344a

Specification

C22orf18 Antibody (monoclonal) (M01) - Product Information

| | |
|-------------------|--------------------------|
| Application | WB, IF, IP, E |
| Primary Accession | O9NSP4 |
| Other Accession | BC000705 |
| Reactivity | Human |
| Host | Mouse |
| Clonality | Monoclonal |
| Isotype | IgG1 kappa |
| Calculated MW | 19737 |

C22orf18 Antibody (monoclonal) (M01) - Additional Information

Gene ID 79019

Other Names

Centromere protein M, CENP-M, Interphase centromere complex protein 39, Proliferation-associated nuclear element protein 1, CENPM, C22orf18, ICEN39, PANE1

Target/Specificity

C22orf18 (AAH00705, 1 a.a. ~ 180 a.a) full-length recombinant protein with GST tag. MW of the GST tag alone is 26 KDa.

Dilution

WB~~1:500~1000
IF~~1:50~200
IP~~N/A
E~~N/A

Format

Clear, colorless solution in phosphate buffered saline, pH 7.2 .

Storage

Store at -20°C or lower. Aliquot to avoid repeated freezing and thawing.

Precautions

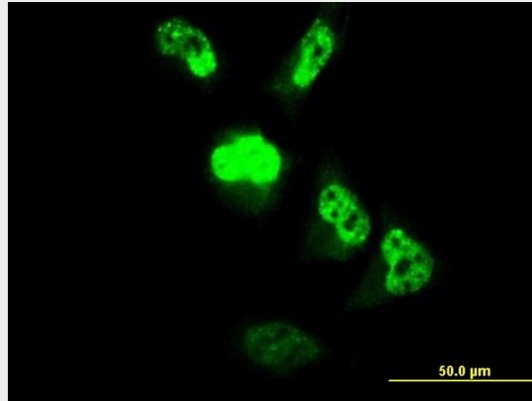
C22orf18 Antibody (monoclonal) (M01) is for research use only and not for use in diagnostic or therapeutic procedures.

C22orf18 Antibody (monoclonal) (M01) - Protocols

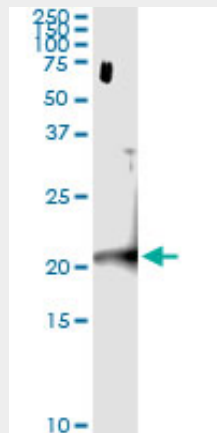
Provided below are standard protocols that you may find useful for product applications.

- [Western Blot](#)
- [Blocking Peptides](#)
- [Dot Blot](#)
- [Immunohistochemistry](#)
- [Immunofluorescence](#)
- [Immunoprecipitation](#)
- [Flow Cytometry](#)
- [Cell Culture](#)

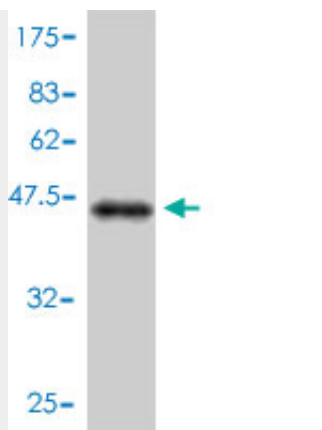
C22orf18 Antibody (monoclonal) (M01) - Images



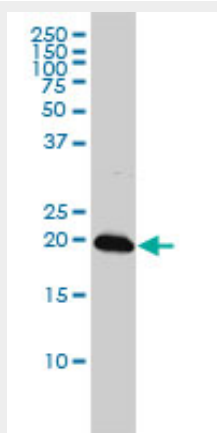
Immunofluorescence of monoclonal antibody to MGC861 on HeLa cell. [antibody concentration 10 ug/ml]



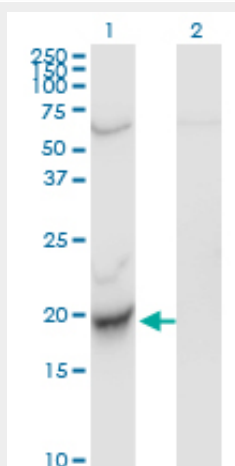
Immunoprecipitation of CENPM transfected lysate using anti-CENPM monoclonal antibody and Protein A Magnetic Bead ([U0007](#)), and immunoblotted with CENPM MaxPab rabbit polyclonal antibody.



Antibody Reactive Against Recombinant Protein. Western Blot detection against Immunogen (45.54 KDa) .

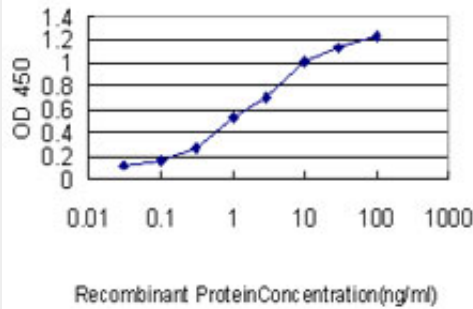


C22orf18 monoclonal antibody (M01), clone 4C12-2C8 Western Blot analysis of C22orf18 expression in K-562 ((Cat # AT1344a)



Western Blot analysis of CENPM expression in transfected 293T cell line by C22orf18 monoclonal antibody (M01), clone 4C12-2C8.

Lane 1: CENPM transfected lysate (Predicted MW: 19.7 KDa).
Lane 2: Non-transfected lysate.



Detection limit for recombinant GST tagged C22orf18 is approximately 0.03ng/ml as a capture antibody.

C22orf18 Antibody (monoclonal) (M01) - Background

The centromere is a specialized chromatin domain, present throughout the cell cycle, that acts as a platform on which the transient assembly of the kinetochore occurs during mitosis. All active centromeres are characterized by the presence of long arrays of nucleosomes in which CENPA (MIM 117139) replaces histone H3 (see MIM 601128). CENPM is an additional factor required for centromere assembly (Foltz et al., 2006 [PubMed 16622419]).

C22orf18 Antibody (monoclonal) (M01) - References

Association between genetic variants in VEGF, ERCC3 and occupational benzene haematotoxicity. Hosgood HD 3rd, et al. *Occup Environ Med*, 2009 Dec. PMID 19773279. Comprehensive analysis of the ICEN (Interphase Centromere Complex) components enriched in the CENP-A chromatin of human cells. Izuta H, et al. *Genes Cells*, 2006 Jun. PMID 16716197. The CENP-H-I complex is required for the efficient incorporation of newly synthesized CENP-A into centromeres. Okada M, et al. *Nat Cell Biol*, 2006 May. PMID 16622420. The human CENP-A centromeric nucleosome-associated complex. Foltz DR, et al. *Nat Cell Biol*, 2006 May. PMID 16622419. The PANE1 gene encodes a novel human minor histocompatibility antigen that is selectively expressed in B-lymphoid cells and B-CLL. Brickner AG, et al. *Blood*, 2006 May 1. PMID 16391015.