

C4B Antibody (monoclonal) (M01)
Mouse monoclonal antibody raised against a partial recombinant C4B.
Catalog # AT1346a

Specification

C4B Antibody (monoclonal) (M01) - Product Information

Application	WB, E
Primary Accession	P0COL5
Other Accession	NM_000592
Reactivity	Human
Host	mouse
Clonality	Monoclonal
Isotype	IgG2b Kappa
Calculated MW	192751

C4B Antibody (monoclonal) (M01) - Additional Information

Gene ID 100293534;721

Other Names

Complement C4-B, Basic complement C4, C3 and PZP-like alpha-2-macroglobulin domain-containing protein 3, Complement C4 beta chain, Complement C4-B alpha chain, C4a anaphylatoxin, C4b-B, C4d-B, Complement C4 gamma chain, C4B, CO4, CPAMD3

Target/Specificity

C4B (NP_000583, 1347 a.a. ~ 1446 a.a) partial recombinant protein with GST tag. MW of the GST tag alone is 26 KDa.

Dilution

WB~~1:500~1000

E~~N/A

Format

Clear, colorless solution in phosphate buffered saline, pH 7.2 .

Storage

Store at -20°C or lower. Aliquot to avoid repeated freezing and thawing.

Precautions

C4B Antibody (monoclonal) (M01) is for research use only and not for use in diagnostic or therapeutic procedures.

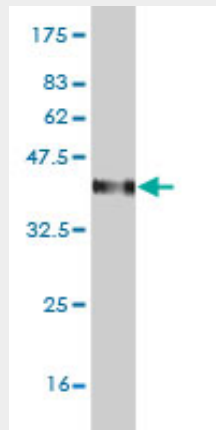
C4B Antibody (monoclonal) (M01) - Protocols

Provided below are standard protocols that you may find useful for product applications.

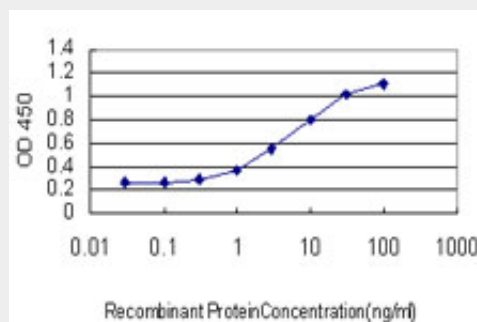
- [Western Blot](#)

- [Blocking Peptides](#)
- [Dot Blot](#)
- [Immunohistochemistry](#)
- [Immunofluorescence](#)
- [Immunoprecipitation](#)
- [Flow Cytometry](#)
- [Cell Culture](#)

C4B Antibody (monoclonal) (M01) - Images



Antibody Reactive Against Recombinant Protein. Western Blot detection against Immunogen (36.74 KDa) .



Detection limit for recombinant GST tagged C4B is approximately 0.1 ng/ml as a capture antibody.

C4B Antibody (monoclonal) (M01) - Background

This gene encodes the basic form of complement factor 4, part of the classical activation pathway. The protein is expressed as a single chain precursor which is proteolytically cleaved into a trimer of alpha, beta, and gamma chains prior to secretion. The trimer provides a surface for interaction between the antigen-antibody complex and other complement components. The alpha chain may be cleaved to release C4 anaphylatoxin, a mediator of local inflammation. Deficiency of this protein is associated with systemic lupus erythematosus. This gene localizes to the major histocompatibility complex (MHC) class III region on chromosome 6. Varying haplotypes of this gene cluster exist, such that individuals may have 1, 2, or 3 copies of this gene. In addition, this gene exists as a long form and a short form due to the presence or absence of a 6.4 kb endogenous HERV-K retrovirus in intron 9. [provided by RefSeq]