

**CACNB2 Antibody (monoclonal) (M01)****Mouse monoclonal antibody raised against a partial recombinant CACNB2.****Catalog # AT1367a****Specification**

---

**CACNB2 Antibody (monoclonal) (M01) - Product Information**

Application	WB, E
Primary Accession	<a href="#">Q08289</a>
Other Accession	<a href="#">NM_201596</a>
Reactivity	Human, Mouse, Rat
Host	Mouse
Clonality	Monoclonal
Isotype	IgG1 Kappa
Calculated MW	73581

**CACNB2 Antibody (monoclonal) (M01) - Additional Information****Gene ID** 783**Other Names**

Voltage-dependent L-type calcium channel subunit beta-2, CAB2, Calcium channel voltage-dependent subunit beta 2, Lambert-Eaton myasthenic syndrome antigen B, MYSB, CACNB2, CACNLB2, MYSB

**Target/Specificity**

CACNB2 (NP\_963890, 213 a.a. ~ 301 a.a) partial recombinant protein with GST tag. MW of the GST tag alone is 26 KDa.

**Dilution**

WB~~1:500~1000

E~~N/A

**Format**

Clear, colorless solution in phosphate buffered saline, pH 7.2 .

**Storage**

Store at -20°C or lower. Aliquot to avoid repeated freezing and thawing.

**Precautions**

CACNB2 Antibody (monoclonal) (M01) is for research use only and not for use in diagnostic or therapeutic procedures.

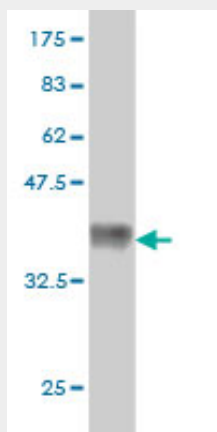
**CACNB2 Antibody (monoclonal) (M01) - Protocols**

Provided below are standard protocols that you may find useful for product applications.

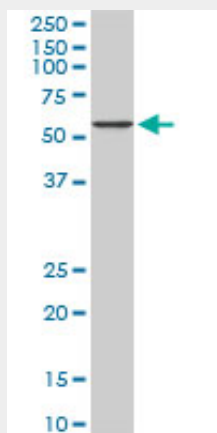
- [Western Blot](#)

- [Blocking Peptides](#)
- [Dot Blot](#)
- [Immunohistochemistry](#)
- [Immunofluorescence](#)
- [Immunoprecipitation](#)
- [Flow Cytometry](#)
- [Cell Culture](#)

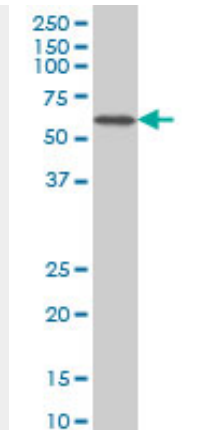
#### CACNB2 Antibody (monoclonal) (M01) - Images



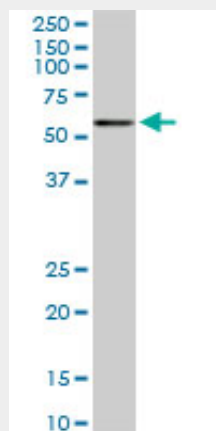
Antibody Reactive Against Recombinant Protein. Western Blot detection against Immunogen (35.53 KDa) .



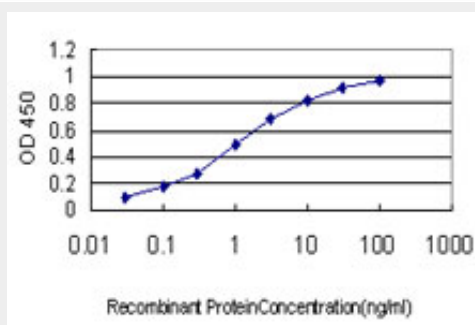
CACNB2 monoclonal antibody (M01), clone 6C1. Western Blot analysis of CACNB2 expression in PC-12 ( (Cat # AT1367a )



CACNB2 monoclonal antibody (M01), clone 6C1 Western Blot analysis of CACNB2 expression in Jurkat (Cat # AT1367a)



CACNB2 monoclonal antibody (M01), clone 6C1. Western Blot analysis of CACNB2 expression in NIH/3T3 (Cat # AT1367a)



Detection limit for recombinant GST tagged CACNB2 is approximately 0.1ng/ml as a capture antibody.

### CACNB2 Antibody (monoclonal) (M01) - Background

This gene encodes a subunit of a voltage-dependent calcium channel protein which is a member of the voltage-gated calcium channel superfamily. The gene product was originally identified as an antigen target in Lambert-Eaton myasthenic syndrome which is an autoimmune disorder. Mutations in this gene are associated with Brugada syndrome. Alternatively spliced variants have been identified for this gene.

### CACNB2 Antibody (monoclonal) (M01) - References

Mutations in the Cardiac L-Type Calcium Channel Associated with Inherited J Wave Syndromes and Sudden Cardiac Death. Burashnikov E, et al. Heart Rhythm, 2010 Sep 2. PMID 20817017. An approach based on a genome-wide association study reveals candidate loci for narcolepsy. Shimada M, et al. Hum Genet, 2010 Oct. PMID 20677014. Blood pressure and hypertension are associated with 7 loci in the Japanese population. Takeuchi F, et al. Circulation, 2010 Jun 1. PMID 20479155. Recapitulation of two genomewide association studies on blood pressure and essential hypertension in the Korean population. Hong KW, et al. J Hum Genet, 2010 Jun. PMID 20414254. Genome-wide association study of bipolar I disorder in the Han Chinese population. Lee MT, et al. Mol Psychiatry, 2010 Apr 13. PMID 20386566.