

CALML5 Antibody (monoclonal) (M16)

Mouse monoclonal antibody raised against a full-length recombinant CALML5.

Catalog # AT1372a

Specification

CALML5 Antibody (monoclonal) (M16) - Product Information

Application	WB, IHC, E
Primary Accession	O9NZT1
Other Accession	BC039172
Reactivity	Human
Host	Mouse
Clonality	Monoclonal
Isotype	IgG2a Kappa
Calculated MW	15893

CALML5 Antibody (monoclonal) (M16) - Additional Information

Gene ID 51806

Other Names

Calmodulin-like protein 5, Calmodulin-like skin protein, CALML5, CLSP

Target/Specificity

CALML5 (AAH39172, 1 a.a. ~ 146 a.a) full-length recombinant protein with GST tag. MW of the GST tag alone is 26 KDa.

Dilution

WB~~1:500~1000

Format

Clear, colorless solution in phosphate buffered saline, pH 7.2 .

Storage

Store at -20°C or lower. Aliquot to avoid repeated freezing and thawing.

Precautions

CALML5 Antibody (monoclonal) (M16) is for research use only and not for use in diagnostic or therapeutic procedures.

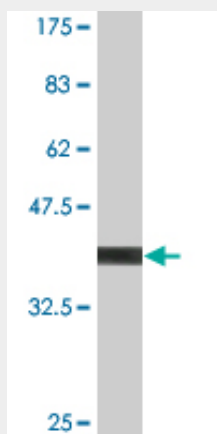
CALML5 Antibody (monoclonal) (M16) - Protocols

Provided below are standard protocols that you may find useful for product applications.

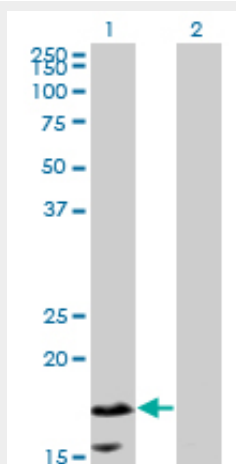
- [Western Blot](#)
- [Blocking Peptides](#)
- [Dot Blot](#)
- [Immunohistochemistry](#)

- [Immunofluorescence](#)
- [Immunoprecipitation](#)
- [Flow Cytometry](#)
- [Cell Culture](#)

CALML5 Antibody (monoclonal) (M16) - Images



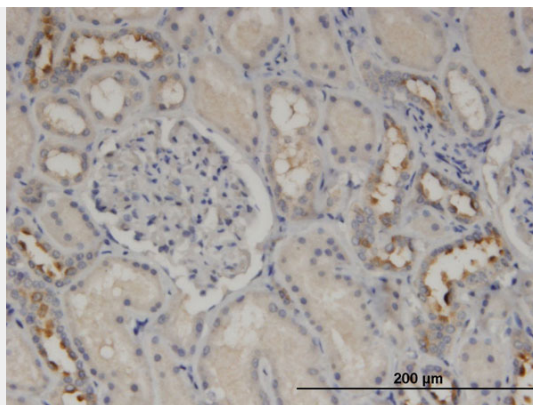
Antibody Reactive Against Recombinant Protein. Western Blot detection against Immunogen (41.8 KDa) .



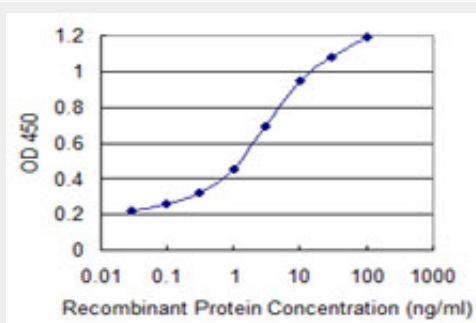
Western Blot analysis of CALML5 expression in transfected 293T cell line by CALML5 monoclonal antibody (M16), clone 2F10.

Lane 1: CALML5 transfected lysate(15.9 KDa).

Lane 2: Non-transfected lysate.



Immunoperoxidase of monoclonal antibody to CALML5 on formalin-fixed paraffin-embedded human kidney. [antibody concentration 3 ug/ml]



Detection limit for recombinant GST tagged CALML5 is 0.03 ng/ml as a capture antibody.

CALML5 Antibody (monoclonal) (M16) - Background

This gene encodes a novel calcium binding protein expressed in the epidermis and related to the calmodulin family of calcium binding proteins. Functional studies with recombinant protein demonstrate it does bind calcium and undergoes a conformational change when it does so. Abundant expression is detected only in reconstructed epidermis and is restricted to differentiating keratinocytes. In addition, it can associate with transglutaminase 3, shown to be a key enzyme in the terminal differentiation of keratinocytes.

CALML5 Antibody (monoclonal) (M16) - References

Defining the human deubiquitinating enzyme interaction landscape. Sowa ME, et al. Cell, 2009 Jul 23. PMID 19615732. Large-scale mapping of human protein-protein interactions by mass spectrometry. Ewing RM, et al. Mol Syst Biol, 2007. PMID 17353931. A structural and dynamic characterization of the EF-hand protein CLSP. Babini E, et al. Structure, 2006 Jun. PMID 16765896. Influence of calcium on the proteolytic degradation of the calmodulin-like skin protein (calmodulin-like protein 5) in psoriatic epidermis. M?hul B, et al. Exp Dermatol, 2006 Jun. PMID 16689864. The status, quality, and expansion of the NIH full-length cDNA project: the Mammalian Gene Collection (MGC). Gerhard DS, et al. Genome Res, 2004 Oct. PMID 15489334.