

## **CALR3 Antibody (monoclonal) (M01)**

Mouse monoclonal antibody raised against a full length recombinant CALR3.

Catalog # AT1374a

### **Specification**

---

#### **CALR3 Antibody (monoclonal) (M01) - Product Information**

Application	WB, E
Primary Accession	<a href="#">O96L12</a>
Other Accession	<a href="#">BC014595</a>
Reactivity	Human
Host	mouse
Clonality	Monoclonal
Isotype	IgG2b Kappa
Calculated MW	44996

#### **CALR3 Antibody (monoclonal) (M01) - Additional Information**

**Gene ID** 125972

##### **Other Names**

Calreticulin-3, Calreticulin-2, Calsperin, CALR3, CRT2

##### **Target/Specificity**

CALR3 (AAH14595, 21 a.a. ~ 384 a.a) full-length recombinant protein with GST tag. MW of the GST tag alone is 26 KDa.

##### **Dilution**

WB~~1:500~1000

E~~N/A

##### **Format**

Clear, colorless solution in phosphate buffered saline, pH 7.2 .

##### **Storage**

Store at -20°C or lower. Aliquot to avoid repeated freezing and thawing.

##### **Precautions**

CALR3 Antibody (monoclonal) (M01) is for research use only and not for use in diagnostic or therapeutic procedures.

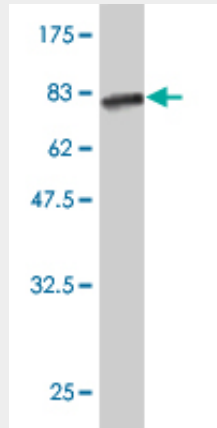
#### **CALR3 Antibody (monoclonal) (M01) - Protocols**

Provided below are standard protocols that you may find useful for product applications.

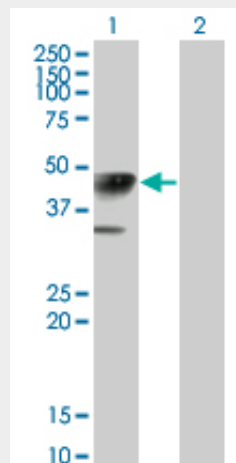
- [Western Blot](#)
- [Blocking Peptides](#)
- [Dot Blot](#)

- [Immunohistochemistry](#)
- [Immunofluorescence](#)
- [Immunoprecipitation](#)
- [Flow Cytometry](#)
- [Cell Culture](#)

### CALR3 Antibody (monoclonal) (M01) - Images



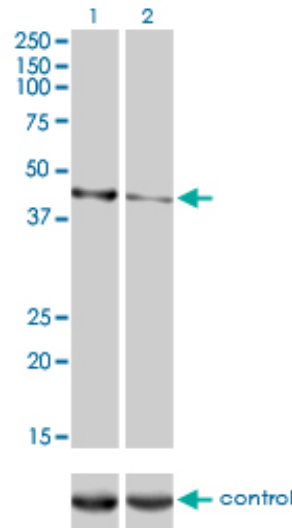
Antibody Reactive Against Recombinant Protein. Western Blot detection against Immunogen (65.78 KDa) .



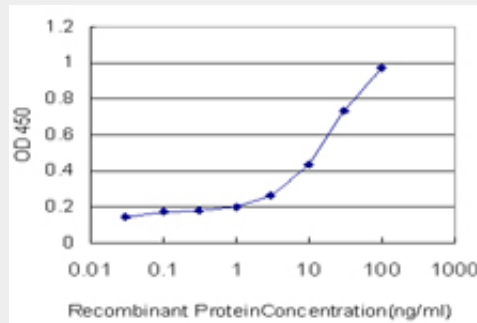
Western Blot analysis of CALR3 expression in transfected 293T cell line by CALR3 monoclonal antibody (M01), clone 4E3.

Lane 1: CALR3 transfected lysate(45 KDa).

Lane 2: Non-transfected lysate.



Western blot analysis of CALR3 over-expressed 293 cell line, cotransfected with CALR3 Validated Chimera RNAi ( (Cat # AT1374a )



Detection limit for recombinant GST tagged CALR3 is approximately 1ng/ml as a capture antibody.

### **CALR3 Antibody (monoclonal) (M01) - Background**

Calreticulins, such as CALR3, are Ca(2+)-binding chaperones localized mainly in the endoplasmic/sarcoplasmic reticulum Persson et al. (2002) [PubMed 12384296].

### **CALR3 Antibody (monoclonal) (M01) - References**

Identification of a novel cancer-testis antigen CRT2 frequently expressed in various cancers using representational differential analysis. Hayashi E, et al. Clin Cancer Res, 2007 Nov 1. PMID 17975137. The status, quality, and expansion of the NIH full-length cDNA project: the Mammalian Gene Collection (MGC). Gerhard DS, et al. Genome Res, 2004 Oct. PMID 15489334. Sequence comparison of human and mouse genes reveals a homologous block structure in the promoter regions. Suzuki Y, et al. Genome Res, 2004 Sep. PMID 15342556. Complete sequencing and characterization of 21,243 full-length human cDNAs. Ota T, et al. Nat Genet, 2004 Jan. PMID 14702039. Generation and initial analysis of more than 15,000 full-length human and mouse cDNA sequences. Strausberg RL, et al. Proc Natl Acad Sci U S A, 2002 Dec 24. PMID 12477932.