

CAMK2D Antibody (monoclonal) (M02)**Mouse monoclonal antibody raised against a partial recombinant CAMK2D.****Catalog # AT1378a****Specification**

CAMK2D Antibody (monoclonal) (M02) - Product Information

Application	WB, IF
Primary Accession	Q13557
Other Accession	BC032784
Reactivity	Human, Mouse
Host	Mouse
Clonality	Monoclonal
Isotype	IgG2b Lambda
Calculated MW	56369

CAMK2D Antibody (monoclonal) (M02) - Additional Information**Gene ID** 817**Other Names**

Calcium/calmodulin-dependent protein kinase type II subunit delta, CaM kinase II subunit delta, CaMK-II subunit delta, CAMK2D, CAMKD

Target/Specificity

CAMK2D (AAH32784, 301 a.a. ~ 410 a.a) partial recombinant protein with GST tag. MW of the GST tag alone is 26 KDa.

Dilution

WB~~1:500~1000

IF~~1:50~200

Format

Clear, colorless solution in phosphate buffered saline, pH 7.2 .

Storage

Store at -20°C or lower. Aliquot to avoid repeated freezing and thawing.

Precautions

CAMK2D Antibody (monoclonal) (M02) is for research use only and not for use in diagnostic or therapeutic procedures.

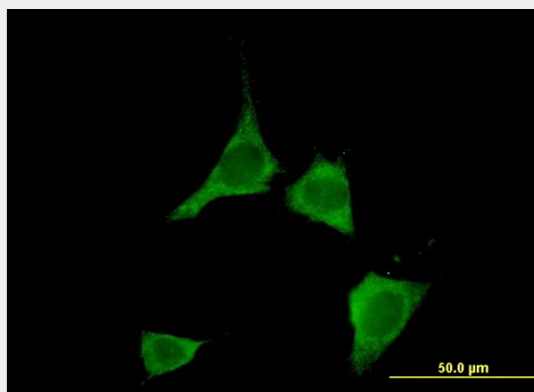
CAMK2D Antibody (monoclonal) (M02) - Protocols

Provided below are standard protocols that you may find useful for product applications.

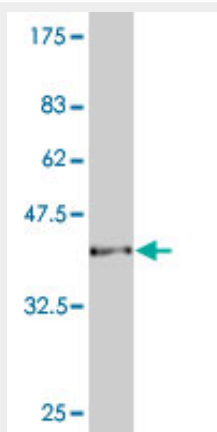
- [Western Blot](#)
- [Blocking Peptides](#)

- [Dot Blot](#)
- [Immunohistochemistry](#)
- [Immunofluorescence](#)
- [Immunoprecipitation](#)
- [Flow Cytometry](#)
- [Cell Culture](#)

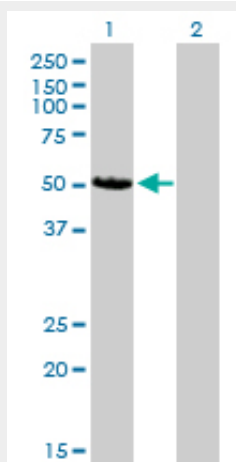
CAMK2D Antibody (monoclonal) (M02) - Images



Immunofluorescence of monoclonal antibody to CAMK2D on NIH/3T3 cell. [antibody concentration 10 ug/ml]

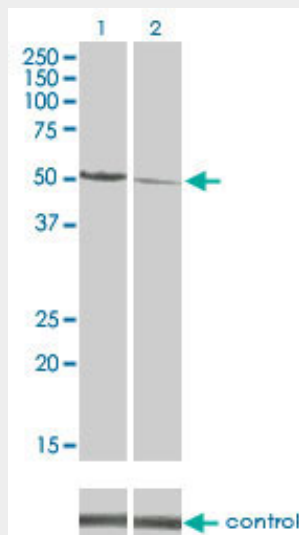


Antibody Reactive Against Recombinant Protein. Western Blot detection against Immunogen (37.73 KDa) .



Western Blot analysis of CAMK2D expression in transfected 293T cell line by CAMK2D monoclonal antibody (M02), clone 1A8.

Lane 1: CAMK2D transfected lysate(54.1 KDa).
Lane 2: Non-transfected lysate.



Western blot analysis of CAMK2D over-expressed 293 cell line, cotransfected with CAMK2D Validated Chimera RNAi (Cat # AT1378a)

CAMK2D Antibody (monoclonal) (M02) - Background

The product of this gene belongs to the serine/threonine protein kinase family and to the Ca(2+)/calmodulin-dependent protein kinase subfamily. Calcium signaling is crucial for several aspects of plasticity at glutamatergic synapses. In mammalian cells, the enzyme is composed of four different chains: alpha, beta, gamma, and delta. The product of this gene is a delta chain. Alternative splicing results in multiple transcript variants encoding distinct isoforms. Distinct isoforms of this chain have different expression patterns.

CAMK2D Antibody (monoclonal) (M02) - References

Calcium/Calmodulin-dependent protein kinase II delta 6 (CaMKIIdelta6) and RhoA involvement in thrombin-induced endothelial barrier dysfunction. Wang Z, et al. J Biol Chem, 2010 Jul 9. PMID 20442409. Personalized smoking cessation: interactions between nicotine dose, dependence and quit-success genotype score. Rose JE, et al. Mol Med, 2010 Jul-Aug. PMID 20379614. A systematic gene-based screen of chr4q22-q32 identifies association of a novel susceptibility gene, DKK2, with the quantitative trait of alcohol dependence symptom counts. Kalsi G, et al. Hum Mol Genet, 2010 Jun 15. PMID 20332099. Defining the human deubiquitinating enzyme interaction landscape. Sowa ME, et al. Cell, 2009 Jul 23. PMID 19615732. A genome-wide association study identifies novel and functionally related susceptibility Loci for Kawasaki disease. Burgner D, et al. PLoS Genet, 2009 Jan. PMID 19132087.