

CAPG Antibody (monoclonal) (M01)

Mouse monoclonal antibody raised against a full length recombinant CAPG.

Catalog # AT1387a

Specification

CAPG Antibody (monoclonal) (M01) - Product Information

Application	IF, WB, E
Primary Accession	P40121
Other Accession	BC000728
Reactivity	Human
Host	mouse
Clonality	Monoclonal
Isotype	IgG1 kappa
Calculated MW	38499

CAPG Antibody (monoclonal) (M01) - Additional Information

Gene ID 822

Other Names

Macrophage-capping protein, Actin regulatory protein CAP-G, CAPG, AFCP, MCP

Target/Specificity

CAPG (AAH00728.1, 1 a.a. ~ 348 a.a) full-length recombinant protein with GST tag. MW of the GST tag alone is 26 KDa.

Dilution

WB~~1:500~1000

Format

Clear, colorless solution in phosphate buffered saline, pH 7.2 .

Storage

Store at -20°C or lower. Aliquot to avoid repeated freezing and thawing.

Precautions

CAPG Antibody (monoclonal) (M01) is for research use only and not for use in diagnostic or therapeutic procedures.

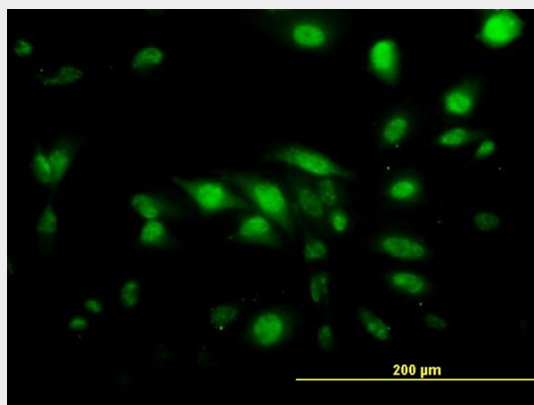
CAPG Antibody (monoclonal) (M01) - Protocols

Provided below are standard protocols that you may find useful for product applications.

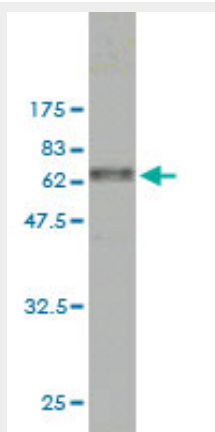
- [Western Blot](#)
- [Blocking Peptides](#)
- [Dot Blot](#)
- [Immunohistochemistry](#)

- [Immunofluorescence](#)
- [Immunoprecipitation](#)
- [Flow Cytometry](#)
- [Cell Culture](#)

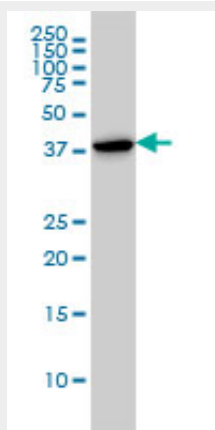
CAPG Antibody (monoclonal) (M01) - Images



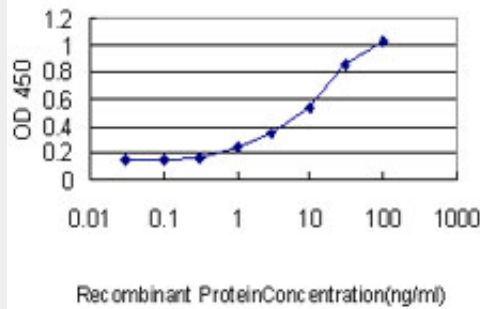
Immunofluorescence of monoclonal antibody to CAPG on HeLa cell. [antibody concentration 10 ug/ml]



Antibody Reactive Against Recombinant Protein. Western Blot detection against Immunogen (63.8 KDa) .



CAPG monoclonal antibody (M01), clone 1F1 Western Blot analysis of CAPG expression in HL-60 (Cat # AT1387a)



Detection limit for recombinant GST tagged CAPG is approximately 0.1ng/ml as a capture antibody.

CAPG Antibody (monoclonal) (M01) - Background

This gene encodes a member of the gelsolin/villin family of actin-regulatory proteins. The encoded protein reversibly blocks the barbed ends of F-actin filaments in a Ca^{2+} and phosphoinositide-regulated manner, but does not sever preformed actin filaments. By capping the barbed ends of actin filaments, the encoded protein contributes to the control of actin-based motility in non-muscle cells. Alternatively spliced transcript variants have been observed, but have not been fully described.

CAPG Antibody (monoclonal) (M01) - References

Proteomic study of macrophages exposed to oxLDL identifies a CAPG polymorphism associated with carotid atherosclerosis. Burillo E, et al. *Atherosclerosis*, 2009 Nov. PMID 19439302. Proteomic analysis of the stroma-related proteins in nasopharyngeal carcinoma and normal nasopharyngeal epithelial tissues. Li MX, et al. *Med Oncol*, 2010 Mar. PMID 19242827. Up-regulation of two actin-associated proteins prompts pulmonary artery smooth muscle cell migration under hypoxia. Zhang R, et al. *Am J Respir Cell Mol Biol*, 2009 Oct. PMID 19188659. The actin-capping protein CapG localizes to microtubule-dependent organelles during the cell cycle. Hubert T, et al. *Biochem Biophys Res Commun*, 2009 Feb 27. PMID 19166812. Integrin $\alpha 6 \beta 4$ controls the expression of genes associated with cell motility, invasion, and metastasis, including S100A4/metastasin. Chen M, et al. *J Biol Chem*, 2009 Jan 16. PMID 19011242.