

**CAPS Antibody (monoclonal) (M01)****Mouse monoclonal antibody raised against a partial recombinant CAPS.****Catalog # AT1392a****Specification**

---

**CAPS Antibody (monoclonal) (M01) - Product Information**

|                   |                           |
|-------------------|---------------------------|
| Application       | WB, E                     |
| Primary Accession | <a href="#">Q13938</a>    |
| Other Accession   | <a href="#">NM_004058</a> |
| Reactivity        | Human                     |
| Host              | mouse                     |
| Clonality         | Monoclonal                |
| Isotype           | IgG1 Kappa                |
| Calculated MW     | 30240                     |

**CAPS Antibody (monoclonal) (M01) - Additional Information****Gene ID** 828**Other Names**

Calcyphosin, Calcyphosine, CAPS

**Target/Specificity**

CAPS (NP\_004049, 1 a.a. ~ 109 a.a) partial recombinant protein with GST tag. MW of the GST tag alone is 26 KDa.

**Dilution**

WB~~1:500~1000

E~~N/A

**Format**

Clear, colorless solution in phosphate buffered saline, pH 7.2 .

**Storage**

Store at -20°C or lower. Aliquot to avoid repeated freezing and thawing.

**Precautions**

CAPS Antibody (monoclonal) (M01) is for research use only and not for use in diagnostic or therapeutic procedures.

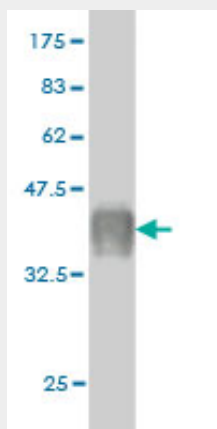
**CAPS Antibody (monoclonal) (M01) - Protocols**

Provided below are standard protocols that you may find useful for product applications.

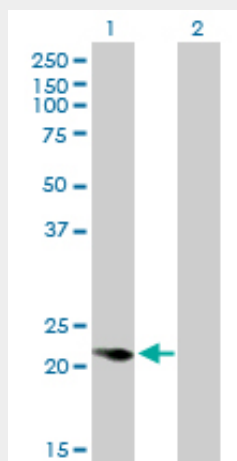
- [Western Blot](#)
- [Blocking Peptides](#)
- [Dot Blot](#)

- [Immunohistochemistry](#)
- [Immunofluorescence](#)
- [Immunoprecipitation](#)
- [Flow Cytometry](#)
- [Cell Culture](#)

## CAPS Antibody (monoclonal) (M01) - Images



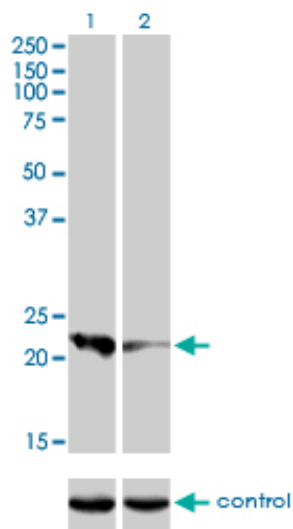
Antibody Reactive Against Recombinant Protein. Western Blot detection against Immunogen (37.73 kDa) .



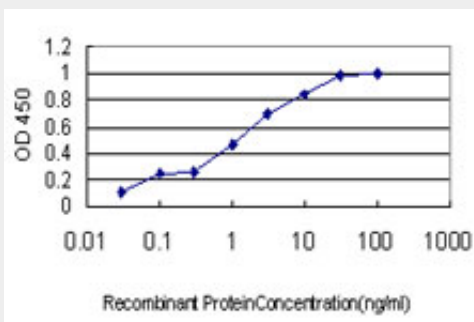
Western Blot analysis of CAPS expression in transfected 293T cell line by CAPS monoclonal antibody (M01), clone 4C6.

Lane 1: CAPS transfected lysate (21 kDa).

Lane 2: Non-transfected lysate.



Western blot analysis of CAPS over-expressed 293 cell line, cotransfected with CAPS Validated Chimera RNAi (Cat # AT1392a)



Detection limit for recombinant GST tagged CAPS is approximately 0.03ng/ml as a capture antibody.

### **CAPS Antibody (monoclonal) (M01) - Background**

This gene encodes a calcium-binding protein, which may play a role in the regulation of ion transport. A similar protein was first described as a potentially important regulatory protein in the dog thyroid and was termed as R2D5 antigen in rabbit. Alternative splicing of this gene generates two transcript variants.

### **CAPS Antibody (monoclonal) (M01) - References**

1. Identification of Novel Biomarkers in Pediatric Primitive Neuroectodermal Tumors and Ependymomas by Proteome-Wide Analysis. de Bont JM, den Boer ML, Kros JM, Passier MM, Reddingius RE, Smitt PA, Luiders TM, Pieters R. J Neuropathol Exp Neurol. 2007 Jun;66(6):505-16.