

CART1 Antibody (monoclonal) (M02)**Mouse monoclonal antibody raised against a partial recombinant CART1.****Catalog # AT1399a****Specification**

CART1 Antibody (monoclonal) (M02) - Product Information

Application	WB, IF, E
Primary Accession	Q15699
Other Accession	NM_006982
Reactivity	Human
Host	mouse
Clonality	Monoclonal
Isotype	IgG2a Kappa
Calculated MW	36961

CART1 Antibody (monoclonal) (M02) - Additional Information**Gene ID** 8092**Other Names**

ALX homeobox protein 1, Cartilage homeoprotein 1, CART-1, ALX1, CART1

Target/Specificity

CART1 (NP_008913, 198 a.a. ~ 306 a.a) partial recombinant protein with GST tag. MW of the GST tag alone is 26 KDa.

Dilution

WB~~1:500~1000

IF~~1:50~200

E~~N/A

Format

Clear, colorless solution in phosphate buffered saline, pH 7.2 .

Storage

Store at -20°C or lower. Aliquot to avoid repeated freezing and thawing.

Precautions

CART1 Antibody (monoclonal) (M02) is for research use only and not for use in diagnostic or therapeutic procedures.

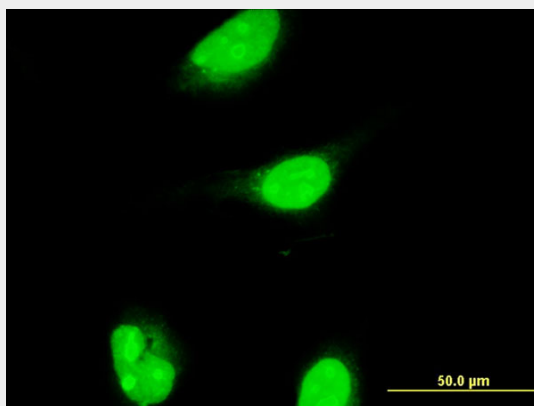
CART1 Antibody (monoclonal) (M02) - Protocols

Provided below are standard protocols that you may find useful for product applications.

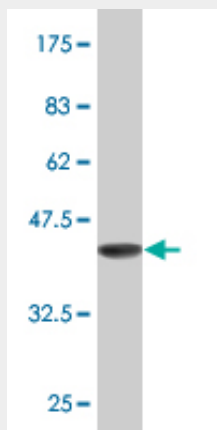
- [Western Blot](#)
- [Blocking Peptides](#)

- [Dot Blot](#)
- [Immunohistochemistry](#)
- [Immunofluorescence](#)
- [Immunoprecipitation](#)
- [Flow Cytometry](#)
- [Cell Culture](#)

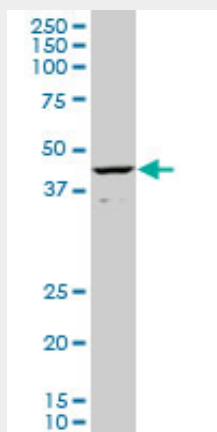
CART1 Antibody (monoclonal) (M02) - Images



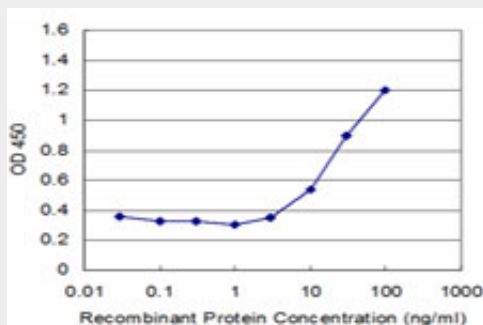
Immunofluorescence of monoclonal antibody to ALX1 on HeLa cell . [antibody concentration 10 ug/ml]



Antibody Reactive Against Recombinant Protein. Western Blot detection against Immunogen (37.73 KDa) .



CART1 monoclonal antibody (M02), clone 2A10. Western Blot analysis of CART1 expression in Hela S3 NE (Cat # AT1399a)



Detection limit for recombinant GST tagged CART1 is approximately 3ng/ml as a capture antibody.

CART1 Antibody (monoclonal) (M02) - Background

The specific function of this gene has yet to be determined in humans; however, in rodents, it is necessary for survival of the forebrain mesenchyme and may also be involved in development of the cervix. Mutations in the mouse gene lead to neural tube defects such as acrania and meroanencephaly.

CART1 Antibody (monoclonal) (M02) - References

Disruption of ALX1 causes extreme microphthalmia and severe facial clefting: expanding the spectrum of autosomal-recessive ALX-related frontonasal dysplasia. Uz E, et al. Am J Hum Genet, 2010 May 14. PMID 20451171. Toward a confocal subcellular atlas of the human proteome. Barbe L, et al. Mol Cell Proteomics, 2008 Mar. PMID 18029348. Towards a proteome-scale map of the human protein-protein interaction network. Rual JF, et al. Nature, 2005 Oct 20. PMID 16189514. The status, quality, and expansion of the NIH full-length cDNA project: the Mammalian Gene Collection (MGC). Gerhard DS, et al. Genome Res, 2004 Oct. PMID 15489334. P300/CBP acts as a coactivator to cartilage homeoprotein-1 (Cart1), paired-like homeoprotein, through acetylation of the conserved lysine residue adjacent to the homeodomain. Iioka T, et al. J Bone Miner Res, 2003 Aug. PMID 12929931.