

CASQ2 Antibody (monoclonal) (M01)

Mouse monoclonal antibody raised against a full length recombinant CASQ2.

Catalog # AT1405a

Specification

CASQ2 Antibody (monoclonal) (M01) - Product Information

Application	WB, E
Primary Accession	O14958
Other Accession	BC022288
Reactivity	Human
Host	mouse
Clonality	Monoclonal
Isotype	IgG2b kappa
Calculated MW	46436

CASQ2 Antibody (monoclonal) (M01) - Additional Information

Gene ID 845

Other Names

Calsequestrin-2, Calsequestrin, cardiac muscle isoform, CASQ2

Target/Specificity

CASQ2 (AAH22288, 20 a.a. ~ 399 a.a) full-length recombinant protein with GST tag. MW of the GST tag alone is 26 KDa.

Dilution

WB~~1:500~1000

E~~N/A

Format

Clear, colorless solution in phosphate buffered saline, pH 7.2 .

Storage

Store at -20°C or lower. Aliquot to avoid repeated freezing and thawing.

Precautions

CASQ2 Antibody (monoclonal) (M01) is for research use only and not for use in diagnostic or therapeutic procedures.

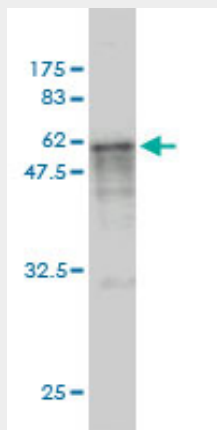
CASQ2 Antibody (monoclonal) (M01) - Protocols

Provided below are standard protocols that you may find useful for product applications.

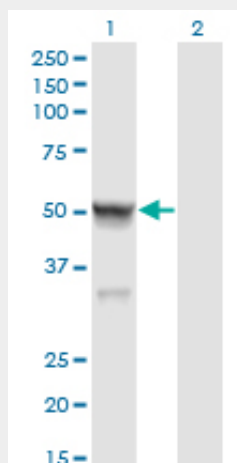
- [Western Blot](#)
- [Blocking Peptides](#)
- [Dot Blot](#)

- [Immunohistochemistry](#)
- [Immunofluorescence](#)
- [Immunoprecipitation](#)
- [Flow Cytometry](#)
- [Cell Culture](#)

CASQ2 Antibody (monoclonal) (M01) - Images



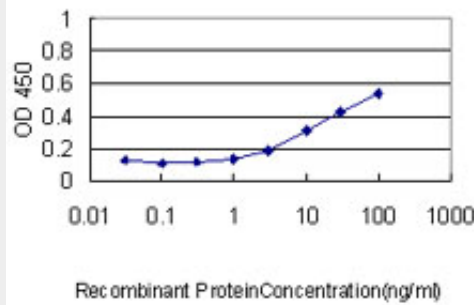
Antibody Reactive Against Recombinant Protein. Western Blot detection against Immunogen (67.54 KDa) .



Western Blot analysis of CASQ2 expression in transfected 293T cell line by CASQ2 monoclonal antibody (M01), clone 1B6.

Lane 1: CASQ2 transfected lysate(46.4 KDa).

Lane 2: Non-transfected lysate.



Detection limit for recombinant GST tagged CASQ2 is approximately 0.3ng/ml as a capture antibody.

CASQ2 Antibody (monoclonal) (M01) - Background

The protein encoded by this gene specifies the cardiac muscle family member of the calsequestrin family. Calsequestrin is localized to the sarcoplasmic reticulum in cardiac and slow skeletal muscle cells. The protein is a calcium binding protein that stores calcium for muscle function. Mutations in this gene cause stress-induced polymorphic ventricular tachycardia, also referred to as catecholaminergic polymorphic ventricular tachycardia 2 (CPVT2), a disease characterized by bidirectional ventricular tachycardia that may lead to cardiac arrest.

CASQ2 Antibody (monoclonal) (M01) - References

1. A novel mouse model of X-linked cardiac hypertrophy. Leatherbury L, Yu Q, Chatterjee B, Walker DL, Yu Z, Tian X, Lo CW. *Am J Physiol Heart Circ Physiol.* 2008 Jun;294(6):H2701-11. Epub 2008 Apr 18.