

**CCL11 Antibody (monoclonal) (M01)**

Mouse monoclonal antibody raised against a full length recombinant CCL11.

Catalog # AT1413a

**Specification**

---

**CCL11 Antibody (monoclonal) (M01) - Product Information**

Application	WB
Primary Accession	<a href="#">P51671</a>
Other Accession	<a href="#">BC017850</a>
Reactivity	Human
Host	mouse
Clonality	Monoclonal
Isotype	IgG1 kappa
Calculated MW	10732

**CCL11 Antibody (monoclonal) (M01) - Additional Information**

**Gene ID** 6356

**Other Names**

Eotaxin, C-C motif chemokine 11, Eosinophil chemotactic protein, Small-inducible cytokine A11, CCL11, SCYA11

**Target/Specificity**

CCL11 (AAH17850, 24 a.a. ~ 97 a.a) full-length recombinant protein with GST tag. MW of the GST tag alone is 26 KDa.

**Dilution**

WB~~1:500~1000

**Format**

Clear, colorless solution in phosphate buffered saline, pH 7.2 .

**Storage**

Store at -20°C or lower. Aliquot to avoid repeated freezing and thawing.

**Precautions**

CCL11 Antibody (monoclonal) (M01) is for research use only and not for use in diagnostic or therapeutic procedures.

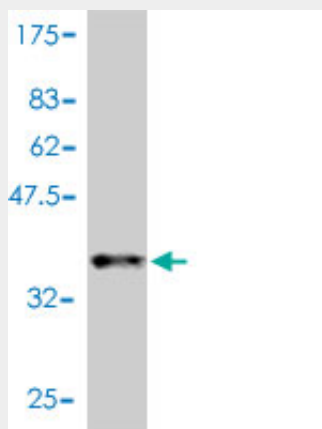
**CCL11 Antibody (monoclonal) (M01) - Protocols**

Provided below are standard protocols that you may find useful for product applications.

- [Western Blot](#)
- [Blocking Peptides](#)
- [Dot Blot](#)

- [Immunohistochemistry](#)
- [Immunofluorescence](#)
- [Immunoprecipitation](#)
- [Flow Cytometry](#)
- [Cell Culture](#)

#### **CCL11 Antibody (monoclonal) (M01) - Images**



Antibody Reactive Against Recombinant Protein. Western Blot detection against Immunogen (33.88 kDa) .

#### **CCL11 Antibody (monoclonal) (M01) - Background**

This gene is one of several Cys-Cys (CC) cytokine genes clustered on the q-arm of chromosome 17. Cytokines are a family of secreted proteins involved in immunoregulatory and inflammatory processes. The CC cytokines are proteins characterized by two adjacent cysteines. The cytokine encoded by this gene displays chemotactic activity for eosinophils, but not mononuclear cells or neutrophils. This eosinophil specific chemokine assumed to be involved in eosinophilic inflammatory diseases such as atopic dermatitis, allergic rhinitis, asthma and parasitic infections.

#### **CCL11 Antibody (monoclonal) (M01) - References**

Evaluation of candidate stromal epithelial cross-talk genes identifies association between risk of serous ovarian cancer and TERT, a cancer susceptibility hot-spot. Johnatty SE, et al. PLoS Genet, 2010 Jul 8. PMID 20628624. Variation at the NFATC2 Locus Increases the Risk of Thiazolidinedione-Induced Edema in the Diabetes REduction Assessment with ramipril and rosiglitazone Medication (DREAM) Study. Bailey SD, et al. Diabetes Care, 2010 Jul 13. PMID 20628086. Single nucleotide polymorphisms in inflammation-related genes are associated with venous thromboembolism. Beckers MM, et al. Eur J Intern Med, 2010 Aug. PMID 20603037. Independent predictive roles of eotaxin Ala23Thr, paraoxonase 2 Ser311Cys and beta-adrenergic receptor Trp64Arg polymorphisms on cardiac disease in Type 2 Diabetes--an 8-year prospective cohort analysis of 1297 patients. Wang Y, et al. Diabet Med, 2010 Apr. PMID 20536507. Eotaxins and CCR3 interaction regulates the Th2 environment of cutaneous T-cell lymphoma. Miyagaki T, et al. J Invest Dermatol, 2010 Sep. PMID 20505746.