

CCL7 Antibody (monoclonal) (M03)**Mouse monoclonal antibody raised against a partial recombinant CCL7.****Catalog # AT1418a****Specification**

CCL7 Antibody (monoclonal) (M03) - Product Information

Application	WB, E
Primary Accession	P80098
Other Accession	NM_006273
Reactivity	Human
Host	mouse
Clonality	Monoclonal
Isotype	IgG2b Kappa
Calculated MW	11200

CCL7 Antibody (monoclonal) (M03) - Additional Information**Gene ID** 6354**Other Names**

C-C motif chemokine 7, Monocyte chemoattractant protein 3, Monocyte chemotactic protein 3, MCP-3, NC28, Small-inducible cytokine A7, CCL7, MCP3, SCYA6, SCYA7

Target/Specificity

CCL7 (NP_006264, 24 a.a. ~ 99 a.a) partial recombinant protein with GST tag. MW of the GST tag alone is 26 KDa.

Dilution

WB~~1:500~1000

Format

Clear, colorless solution in phosphate buffered saline, pH 7.2 .

Storage

Store at -20°C or lower. Aliquot to avoid repeated freezing and thawing.

Precautions

CCL7 Antibody (monoclonal) (M03) is for research use only and not for use in diagnostic or therapeutic procedures.

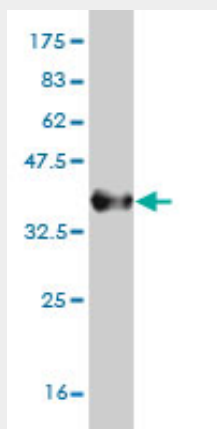
CCL7 Antibody (monoclonal) (M03) - Protocols

Provided below are standard protocols that you may find useful for product applications.

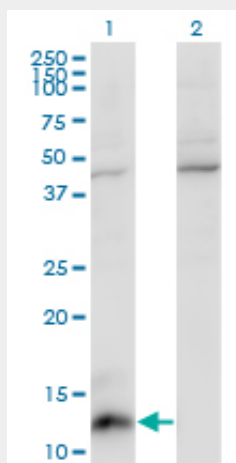
- [Western Blot](#)
- [Blocking Peptides](#)
- [Dot Blot](#)

- [Immunohistochemistry](#)
- [Immunofluorescence](#)
- [Immunoprecipitation](#)
- [Flow Cytometry](#)
- [Cell Culture](#)

CCL7 Antibody (monoclonal) (M03) - Images



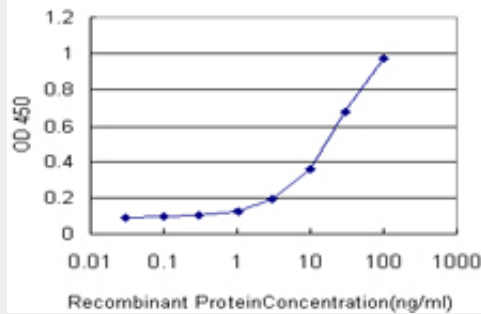
Antibody Reactive Against Recombinant Protein. Western Blot detection against Immunogen (34.1 kDa) .



Western Blot analysis of CCL7 expression in transfected 293T cell line by CCL7 monoclonal antibody (M03), clone 4B5.

Lane 1: CCL7 transfected lysate(11.2 kDa).

Lane 2: Non-transfected lysate.



Detection limit for recombinant GST tagged CCL7 is approximately 1ng/ml as a capture antibody.

CCL7 Antibody (monoclonal) (M03) - Background

This gene encodes monocyte chemotactic protein 3, a secreted chemokine which attracts macrophages during inflammation and metastasis. It is a member of the C-C subfamily of chemokines which are characterized by having two adjacent cysteine residues. The protein is an in vivo substrate of matrix metalloproteinase 2, an enzyme which degrades components of the extracellular matrix. This gene is part of a cluster of C-C chemokine family members on chromosome 17q.

CCL7 Antibody (monoclonal) (M03) - References

Evaluation of candidate stromal epithelial cross-talk genes identifies association between risk of serous ovarian cancer and TERT, a cancer susceptibility hot-spot. Johnatty SE, et al. PLoS Genet, 2010 Jul 8. PMID 20628624. Fucosyltransferase 2 (FUT2) non-secretor status is associated with Crohn's disease. McGovern DP, et al. Hum Mol Genet, 2010 Sep 1. PMID 20570966. Interleukin-9 polymorphism in infants with respiratory syncytial virus infection: an opposite effect in boys and girls. Schuurhof A, et al. Pediatr Pulmonol, 2010 Jun. PMID 20503287. Polymorphisms in innate immunity genes and risk of childhood leukemia. Han S, et al. Hum Immunol, 2010 Jul. PMID 20438785. Risk of meningioma and common variation in genes related to innate immunity. Rajaraman P, et al. Cancer Epidemiol Biomarkers Prev, 2010 May. PMID 20406964.