

**CCNL1 Antibody (monoclonal) (M01)****Mouse monoclonal antibody raised against a full length recombinant CCNL1.****Catalog # AT1424a****Specification**

---

**CCNL1 Antibody (monoclonal) (M01) - Product Information**

Application	WB, IF, E
Primary Accession	<a href="#">O9UK58</a>
Other Accession	<a href="#">BC038394</a>
Reactivity	Human
Host	mouse
Clonality	Monoclonal
Isotype	IgG1 kappa
Calculated MW	59634

**CCNL1 Antibody (monoclonal) (M01) - Additional Information****Gene ID** 57018**Other Names**

Cyclin-L1, Cyclin-L, CCNL1

**Target/Specificity**

CCNL1 (AAH38394, 1 a.a. ~ 172 a.a) full-length recombinant protein with GST tag. MW of the GST tag alone is 26 KDa.

**Dilution**

WB~~1:500~1000

IF~~1:50~200

E~~N/A

**Format**

Clear, colorless solution in phosphate buffered saline, pH 7.2 .

**Storage**

Store at -20°C or lower. Aliquot to avoid repeated freezing and thawing.

**Precautions**

CCNL1 Antibody (monoclonal) (M01) is for research use only and not for use in diagnostic or therapeutic procedures.

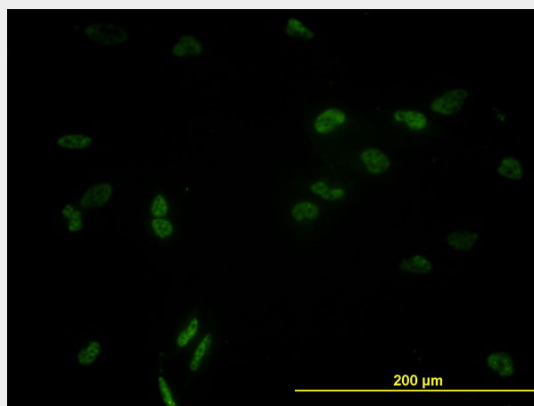
**CCNL1 Antibody (monoclonal) (M01) - Protocols**

Provided below are standard protocols that you may find useful for product applications.

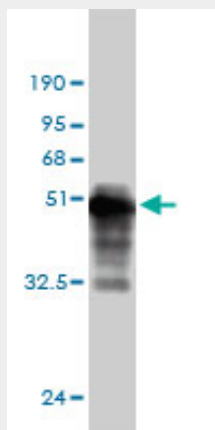
- [Western Blot](#)
- [Blocking Peptides](#)

- [Dot Blot](#)
- [Immunohistochemistry](#)
- [Immunofluorescence](#)
- [Immunoprecipitation](#)
- [Flow Cytometry](#)
- [Cell Culture](#)

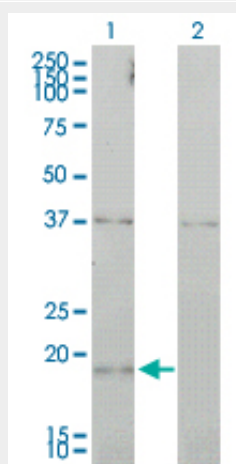
### CCNL1 Antibody (monoclonal) (M01) - Images



Immunofluorescence of monoclonal antibody to CCNL1 on HeLa cell. [antibody concentration 10 ug/ml]



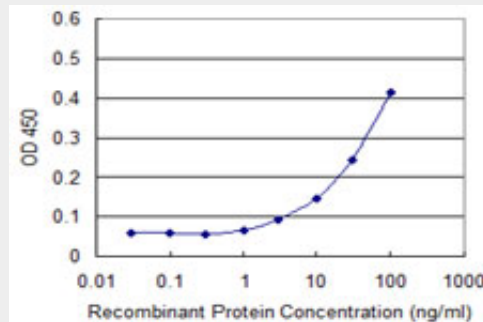
Antibody Reactive Against Recombinant Protein. Western Blot detection against Immunogen (44.66 KDa) .



Western Blot analysis of CCNL1 expression in transfected 293T cell line by CCNL1 monoclonal antibody (M01), clone 1F7-1C5.

Lane 1: CCNL1 transfected lysate(18 KDa).

Lane 2: Non-transfected lysate.



Detection limit for recombinant GST tagged CCNL1 is approximately 3ng/ml as a capture antibody.

### CCNL1 Antibody (monoclonal) (M01) - References

Variants in ADCY5 and near CCNL1 are associated with fetal growth and birth weight. Freathy RM, et al. Nat Genet, 2010 May. PMID 20372150. Characterization of cyclin L1 and L2 interactions with CDK11 and splicing factors: influence of cyclin L isoforms on splice site selection. Loyer P, et al. J Biol Chem, 2008 Mar 21. PMID 18216018. Characterization of cyclin L1 as an immobile component of the splicing factor compartment. Herrmann A, et al. FASEB J, 2007 Oct. PMID 17494991. Cyclin L1 (CCNL1) gene alterations in human head and neck squamous cell carcinoma. Muller D, et al. Br J Cancer, 2006 Apr 10. PMID 16598186. Amplification of Cyclin L1 is associated with lymph node metastases in head and neck squamous cell carcinoma (HNSCC). Sticht C, et al. Br J Cancer, 2005 Feb 28. PMID 15700036.