

**CCT2 Antibody (monoclonal) (M01)****Mouse monoclonal antibody raised against a partial recombinant CCT2.****Catalog # AT1427a****Specification**

---

**CCT2 Antibody (monoclonal) (M01) - Product Information**

Application	WB, IF, E
Primary Accession	<a href="#">P78371</a>
Other Accession	<a href="#">NM_006431</a>
Reactivity	Human
Host	mouse
Clonality	Monoclonal
Isotype	IgG1 Kappa
Calculated MW	57488

**CCT2 Antibody (monoclonal) (M01) - Additional Information****Gene ID** 10576**Other Names**

T-complex protein 1 subunit beta, TCP-1-beta, CCT-beta, CCT2, 99D81, CCTB

**Target/Specificity**

CCT2 (NP\_006422, 117 a.a. ~ 217 a.a) partial recombinant protein with GST tag. MW of the GST tag alone is 26 KDa.

**Dilution**

WB~~1:500~1000

IF~~1:50~200

E~~N/A

**Format**

Clear, colorless solution in phosphate buffered saline, pH 7.2 .

**Storage**

Store at -20°C or lower. Aliquot to avoid repeated freezing and thawing.

**Precautions**

CCT2 Antibody (monoclonal) (M01) is for research use only and not for use in diagnostic or therapeutic procedures.

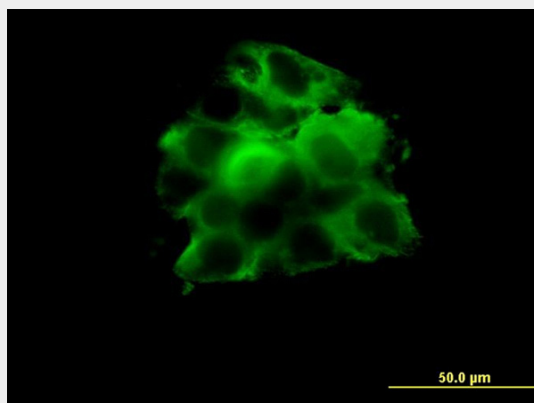
**CCT2 Antibody (monoclonal) (M01) - Protocols**

Provided below are standard protocols that you may find useful for product applications.

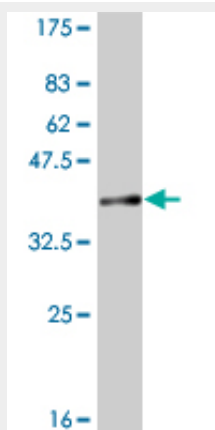
- [Western Blot](#)
- [Blocking Peptides](#)

- [Dot Blot](#)
- [Immunohistochemistry](#)
- [Immunofluorescence](#)
- [Immunoprecipitation](#)
- [Flow Cytometry](#)
- [Cell Culture](#)

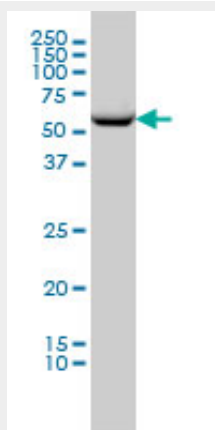
### CCT2 Antibody (monoclonal) (M01) - Images



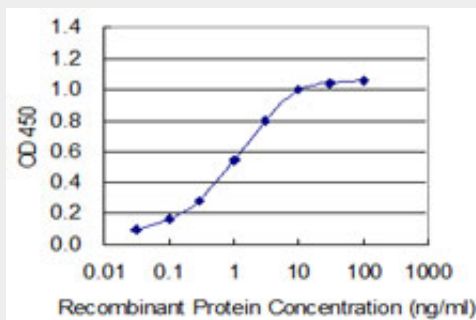
Immunofluorescence of monoclonal antibody to CCT2 on A-431 cell. [antibody concentration 10 ug/ml]



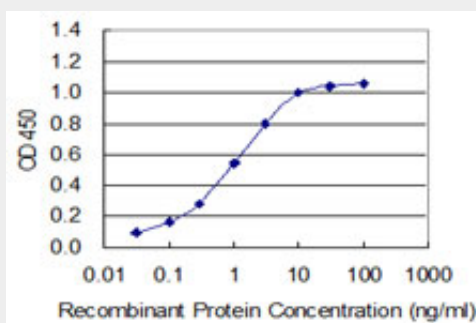
Antibody Reactive Against Recombinant Protein. Western Blot detection against Immunogen (36.85 KDa) .



CCT2 monoclonal antibody (M01), clone 2G6 Western Blot analysis of CCT2 expression in A-431 (Cat # AT1427a )



Detection limit for recombinant GST tagged CCT2 is approximately 0.3ng/ml as a capture antibody.



Detection limit for recombinant GST tagged CCT2 is 0.03 ng/ml as a capture antibody.

### CCT2 Antibody (monoclonal) (M01) - Background

The protein encoded by this gene is a molecular chaperone that is a member of the chaperonin containing TCP1 complex (CCT), also known as the TCP1 ring complex (TRiC). This complex consists of two identical stacked rings, each containing eight different proteins. Unfolded polypeptides enter the central cavity of the complex and are folded in an ATP-dependent manner. The complex folds various proteins, including actin and tubulin. Alternate transcriptional splice variants of the gene described in this record have been observed but have not been thoroughly characterized.

### CCT2 Antibody (monoclonal) (M01) - References

1.Reconstitution of the human chaperonin CCT by co-expression of the eight distinct subunits in mammalian cells.Machida K, Masutani M, Kobayashi T, Mikami S, Nishino Y, Miyazawa A, Imataka H.Protein Expr Purif. 2011 Nov 22;22:2.BBS6, BBS10, and BBS12 form a complex with CCT/TRiC family chaperonins and mediate BBSome assembly.Seo S, Baye LM, Schulz NP, Beck JS, Zhang Q, Slusarski DC, Sheffield VC.Proc Natl Acad Sci U S A. 2010 Jan 4. [Epub ahead of print]