

**CCT5 Antibody (monoclonal) (M01)****Mouse monoclonal antibody raised against a full length recombinant CCT5.****Catalog # AT1428a****Specification**

---

**CCT5 Antibody (monoclonal) (M01) - Product Information**

Application	WB, IHC, IF, E
Primary Accession	<a href="#">P48643</a>
Other Accession	<a href="#">BC006543</a>
Reactivity	Human
Host	mouse
Clonality	Monoclonal
Isotype	IgG1 kappa
Calculated MW	59671

**CCT5 Antibody (monoclonal) (M01) - Additional Information****Gene ID** 22948**Other Names**

T-complex protein 1 subunit epsilon, TCP-1-epsilon, CCT-epsilon, CCT5, CCTE, KIAA0098

**Target/Specificity**

CCT5 (AAH06543, 1 a.a. ~ 541 a.a) full-length recombinant protein with GST tag. MW of the GST tag alone is 26 KDa.

**Dilution**

WB~~1:500~1000

IHC~~1:100~500

IF~~1:50~200

E~~N/A

**Format**

Clear, colorless solution in phosphate buffered saline, pH 7.2 .

**Storage**

Store at -20°C or lower. Aliquot to avoid repeated freezing and thawing.

**Precautions**

CCT5 Antibody (monoclonal) (M01) is for research use only and not for use in diagnostic or therapeutic procedures.

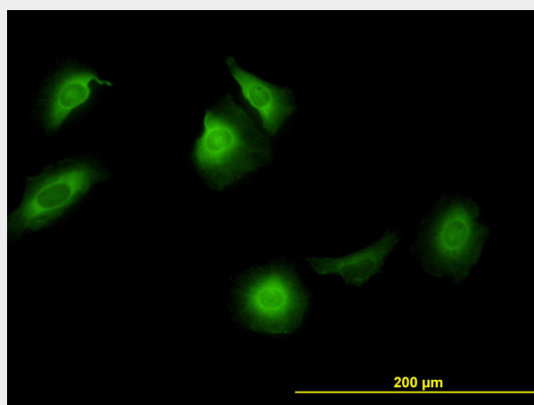
**CCT5 Antibody (monoclonal) (M01) - Protocols**

Provided below are standard protocols that you may find useful for product applications.

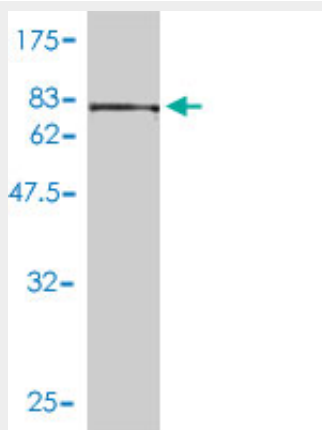
- [Western Blot](#)

- [Blocking Peptides](#)
- [Dot Blot](#)
- [Immunohistochemistry](#)
- [Immunofluorescence](#)
- [Immunoprecipitation](#)
- [Flow Cytometry](#)
- [Cell Culture](#)

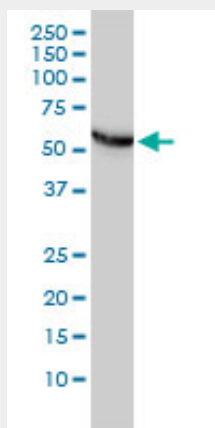
## CCT5 Antibody (monoclonal) (M01) - Images



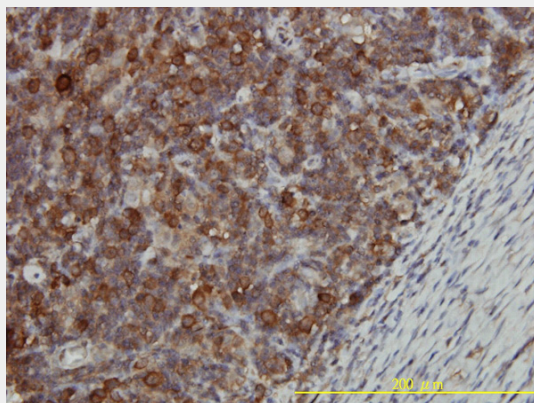
Immunofluorescence of monoclonal antibody to CCT5 on HeLa cell. [antibody concentration 10 ug/ml]



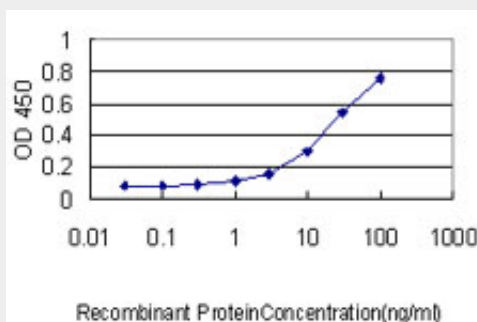
Antibody Reactive Against Recombinant Protein. Western Blot detection against Immunogen (85.25 KDa) .



CCT5 monoclonal antibody (M01), clone 4E5-4B1 Western Blot analysis of CCT5 expression in Hela ( (Cat # AT1428a )



Immunoperoxidase of monoclonal antibody to CCT5 on formalin-fixed paraffin-embedded human lymphoma tissue. [antibody concentration 1 ug/ml]



Detection limit for recombinant GST tagged CCT5 is approximately 0.3ng/ml as a capture antibody.

### CCT5 Antibody (monoclonal) (M01) - Background

The protein encoded by this gene is a molecular chaperone that is a member of the chaperonin containing TCP1 complex (CCT), also known as the TCP1 ring complex (TRiC). This complex consists of two identical stacked rings, each containing eight different proteins. Unfolded polypeptides enter the central cavity of the complex and are folded in an ATP-dependent manner. The complex folds various proteins, including actin and tubulin. Alternate transcriptional splice variants of this gene have been observed but have not been thoroughly characterized. In addition, three pseudogenes of this gene have been identified.

### CCT5 Antibody (monoclonal) (M01) - References

1.Evaluation of formalin-fixed paraffin-embedded tissues in the proteomic analysis of parathyroid glands.Donadio E, Giusti L, Cetani F, Da Valle Y, Ciregia F, Giannaccini G, Pardi E, Saponaro F, Torregrossa L, Basolo F, Marcocci C, Lucacchini A.Proteome Sci. 2011 Jun 8;9(1):29.2.A proteomic approach to study parathyroid glands.Giusti L, Cetani F, Ciregia F, Da Valle Y, Donadio E, Giannaccini G, Banti C, Pardi E, Saponaro F, Basolo F, Berti P, Miccoli P, Pinchera A, Marcocci C, Lucacchini A.Mol Biosyst. 2011 Mar;7(3):687-99. Epub 2010 Dec 21.3.Chaperonin TRiC/CCT participates in replication of hepatitis C virus genome via interaction with the viral NS5B protein.Inoue Y, Aizaki H, Hara H, Matsuda M, Ando T, Shimoji T, Murakami K, Masaki T, Shoji I, Homma S, Matsuura Y, Miyamura T, Wakita T, Suzuki T.Virology. 2010 Nov 17. [Epub ahead of print]