

CDC37 Antibody (monoclonal) (M01)**Mouse monoclonal antibody raised against a full length recombinant CDC37.****Catalog # AT1461a****Specification**

CDC37 Antibody (monoclonal) (M01) - Product Information

Application	WB, IHC, IF
Primary Accession	Q16543
Other Accession	BC008793
Reactivity	Human
Host	mouse
Clonality	Monoclonal
Isotype	IgG1 kappa
Calculated MW	44468

CDC37 Antibody (monoclonal) (M01) - Additional Information**Gene ID** 11140**Other Names**

Hsp90 co-chaperone Cdc37, Hsp90 chaperone protein kinase-targeting subunit, p50Cdc37, Hsp90 co-chaperone Cdc37, N-terminally processed, CDC37, CDC37A

Target/Specificity

CDC37 (AAH08793.1, 1 a.a. ~ 378 a.a) full-length recombinant protein with GST tag. MW of the GST tag alone is 26 KDa.

Dilution

WB~~1:500~1000

IHC~~1:100~500

IF~~1:50~200

Format

Clear, colorless solution in phosphate buffered saline, pH 7.2 .

Storage

Store at -20°C or lower. Aliquot to avoid repeated freezing and thawing.

Precautions

CDC37 Antibody (monoclonal) (M01) is for research use only and not for use in diagnostic or therapeutic procedures.

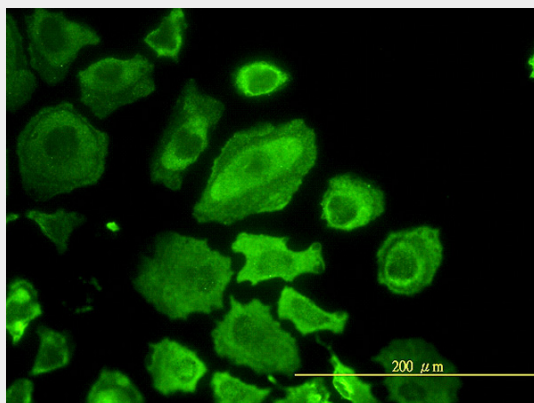
CDC37 Antibody (monoclonal) (M01) - Protocols

Provided below are standard protocols that you may find useful for product applications.

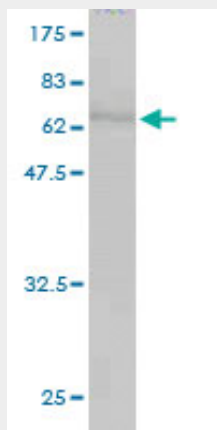
- [Western Blot](#)

- [Blocking Peptides](#)
- [Dot Blot](#)
- [Immunohistochemistry](#)
- [Immunofluorescence](#)
- [Immunoprecipitation](#)
- [Flow Cytometry](#)
- [Cell Culture](#)

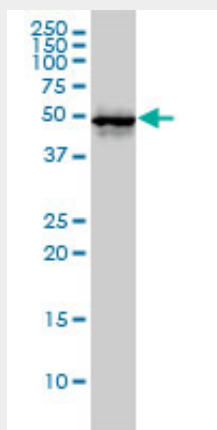
CDC37 Antibody (monoclonal) (M01) - Images



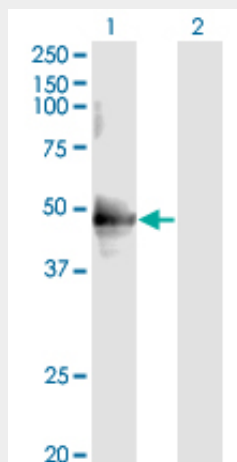
Immunofluorescence of monoclonal antibody to CDC37 on HeLa cell. [antibody concentration 10 ug/ml]



Antibody Reactive Against Recombinant Protein. Western Blot detection against Immunogen (67.32 KDa) .



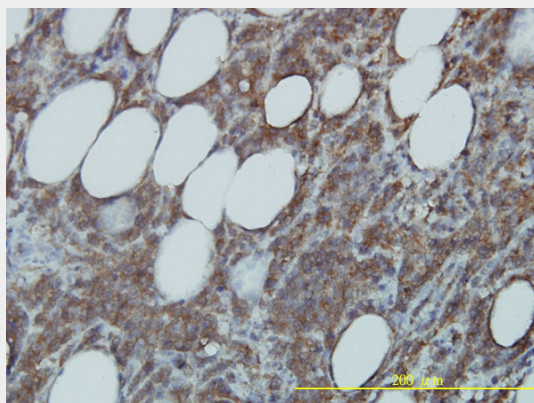
CDC37 monoclonal antibody (M01), clone 3C7. Western Blot analysis of CDC37 expression in HL-60 ((Cat # AT1461a)



Western Blot analysis of CDC37 expression in transfected 293T cell line by CDC37 monoclonal antibody (M01), clone 3C7.

Lane 1: CDC37 transfected lysate(44.5 KDa).

Lane 2: Non-transfected lysate.



Immunoperoxidase of monoclonal antibody to CDC37 on formalin-fixed paraffin-embedded human malignant lymphoma, diffuse large B tissue. [antibody concentration 1 ug/ml]

CDC37 Antibody (monoclonal) (M01) - Background

The protein encoded by this gene is highly similar to Cdc 37, a cell division cycle control protein of *Saccharomyces cerevisiae*. This protein is a molecular chaperone with specific function in cell signal transduction. It has been shown to form complex with Hsp90 and a variety of protein kinases including CDK4, CDK6, SRC, RAF-1, MOK, as well as eIF2 alpha kinases. It is thought to play a critical role in directing Hsp90 to its target kinases.

CDC37 Antibody (monoclonal) (M01) - References

Specific regulation of noncanonical p38alpha activation by Hsp90-Cdc37 chaperone complex in cardiomyocyte. Ota A, et al. Circ Res, 2010 Apr 30. PMID 20299663. Swe1Wee1-dependent tyrosine phosphorylation of Hsp90 regulates distinct facets of chaperone function. Mollapour M, et al. Mol Cell, 2010 Feb 12. PMID 20159553. Association of mitotic regulation pathway polymorphisms with pancreatic cancer risk and outcome. Couch FJ, et al. Cancer Epidemiol Biomarkers Prev, 2010 Jan. PMID 20056645. Characterization of celastrol to inhibit hsp90 and cdc37 interaction. Zhang T, et al. J

Biol Chem, 2009 Dec 18. PMID 19858214. Defining the human deubiquitinating enzyme interaction landscape. Sowa ME, et al. Cell, 2009 Jul 23. PMID 19615732.