

CDC42BPB Antibody (monoclonal) (M03)**Mouse monoclonal antibody raised against a partial recombinant CDC42BPB.****Catalog # AT1465a****Specification**

CDC42BPB Antibody (monoclonal) (M03) - Product Information

Application	WB, IHC, IF, E
Primary Accession	O9Y5S2
Other Accession	AF128625
Reactivity	Human, Rat
Host	mouse
Clonality	Monoclonal
Isotype	IgG2a Kappa
Calculated MW	194315

CDC42BPB Antibody (monoclonal) (M03) - Additional Information**Gene ID** 9578**Other Names**

Serine/threonine-protein kinase MRCK beta, CDC42-binding protein kinase beta, CDC42BP-beta, DMPK-like beta, Myotonic dystrophy kinase-related CDC42-binding kinase beta, MRCK beta, Myotonic dystrophy protein kinase-like beta, CDC42BPB {ECO:0000312|EMBL:AAD375061}

Target/Specificity

CDC42BPB (AAD37506, 1580 a.a. ~ 1679 a.a) partial recombinant protein with GST tag. MW of the GST tag alone is 26 KDa.

Dilution

WB~~1:500~1000

IHC~~1:100~500

IF~~1:50~200

E~~N/A

Format

Clear, colorless solution in phosphate buffered saline, pH 7.2 .

Storage

Store at -20°C or lower. Aliquot to avoid repeated freezing and thawing.

Precautions

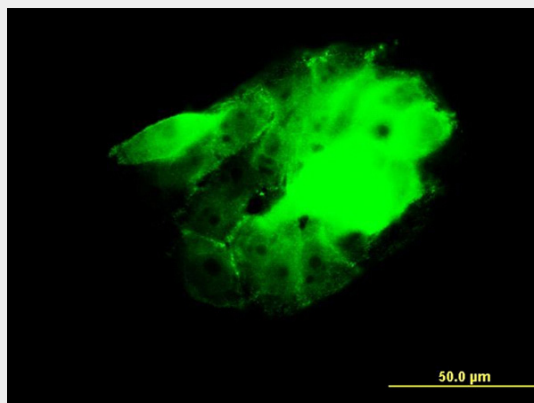
CDC42BPB Antibody (monoclonal) (M03) is for research use only and not for use in diagnostic or therapeutic procedures.

CDC42BPB Antibody (monoclonal) (M03) - Protocols

Provided below are standard protocols that you may find useful for product applications.

- [Western Blot](#)
- [Blocking Peptides](#)
- [Dot Blot](#)
- [Immunohistochemistry](#)
- [Immunofluorescence](#)
- [Immunoprecipitation](#)
- [Flow Cytometry](#)
- [Cell Culture](#)

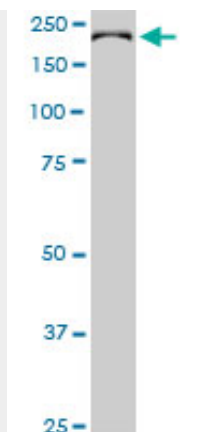
CDC42BPB Antibody (monoclonal) (M03) - Images



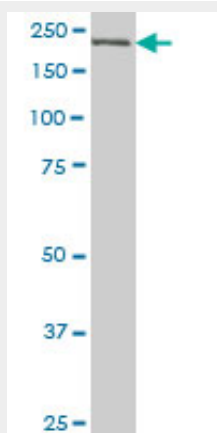
Immunofluorescence of monoclonal antibody to CDC42BPB on A-431 cell. [antibody concentration 10 ug/ml]



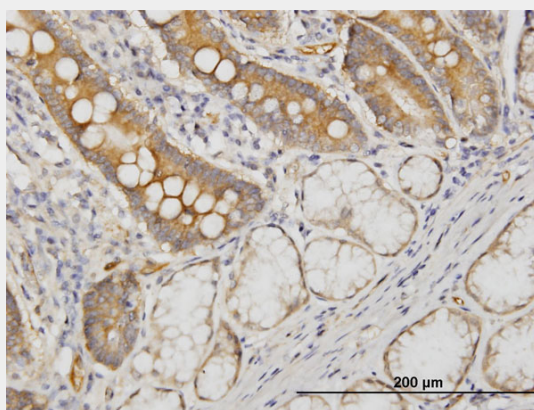
Antibody Reactive Against Recombinant Protein. Western Blot detection against Immunogen (36.63 KDa) .



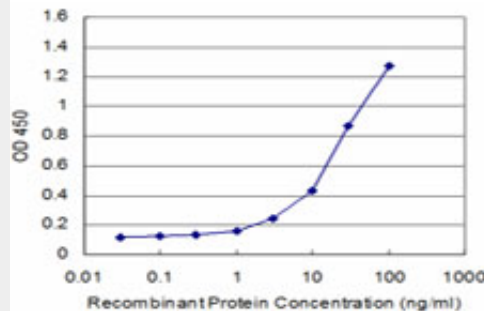
CDC42BPB monoclonal antibody (M03), clone 2F4. Western Blot analysis of CDC42BPB expression in PC-12 (Cat # AT1465a)



CDC42BPB monoclonal antibody (M03), clone 2F4 Western Blot analysis of CDC42BPB expression in A-431 (Cat # AT1465a)



Immunoperoxidase of monoclonal antibody to CDC42BPB on formalin-fixed paraffin-embedded human small Intestine. [antibody concentration 3 ug/ml]



Detection limit for recombinant GST tagged CDC42BPB is approximately 0.3ng/ml as a capture antibody.

CDC42BPB Antibody (monoclonal) (M03) - Background

This gene encodes a member of the serine/threonine protein kinase family. The encoded protein contains a Cdc42/Rac-binding p21 binding domain resembling that of PAK kinase. The kinase domain of this protein is most closely related to that of myotonic dystrophy kinase-related ROK. Studies of the similar gene in rat suggested that this kinase may act as a downstream effector of Cdc42 in cytoskeletal reorganization.

CDC42BPB Antibody (monoclonal) (M03) - References

Personalized smoking cessation: interactions between nicotine dose, dependence and quit-success genotype score. Rose JE, et al. Mol Med, 2010 Jul-Aug. PMID 20379614. Overexpression and unique rearrangement of VH2 transcripts in immunoglobulin variable heavy chain genes in ankylosing spondylitis patients. Kim YJ, et al. Exp Mol Med, 2010 May 31. PMID 20177145. Characterization of the interaction of phorbol esters with the C1 domain of MRCK (myotonic dystrophy kinase-related Cdc42 binding kinase) alpha/beta. Choi SH, et al. J Biol Chem, 2008 Apr 18. PMID 18263588. Large-scale mapping of human protein-protein interactions by mass spectrometry. Ewing RM, et al. Mol Syst Biol, 2007. PMID 17353931. Global, in vivo, and site-specific phosphorylation dynamics in signaling networks. Olsen JV, et al. Cell, 2006 Nov 3. PMID 17081983.