

CDC45L Antibody (monoclonal) (M01)**Mouse monoclonal antibody raised against a full length recombinant CDC45L.****Catalog # AT1467a****Specification**

CDC45L Antibody (monoclonal) (M01) - Product Information

Application	WB, IF, E
Primary Accession	O75419
Other Accession	BC006232
Reactivity	Human
Host	Mouse
Clonality	Monoclonal
Isotype	IgG2b Kappa
Calculated MW	65569

CDC45L Antibody (monoclonal) (M01) - Additional Information**Gene ID** 8318**Other Names**

Cell division control protein 45 homolog, PORC-PI-1, CDC45, CDC45L, CDC45L2

Target/Specificity

CDC45L (AAH06232, 1 a.a. ~ 566 a.a) full-length recombinant protein with GST tag. MW of the GST tag alone is 26 KDa.

Dilution

WB~~1:500~1000

IF~~1:50~200

E~~N/A

Format

Clear, colorless solution in phosphate buffered saline, pH 7.2 .

Storage

Store at -20°C or lower. Aliquot to avoid repeated freezing and thawing.

Precautions

CDC45L Antibody (monoclonal) (M01) is for research use only and not for use in diagnostic or therapeutic procedures.

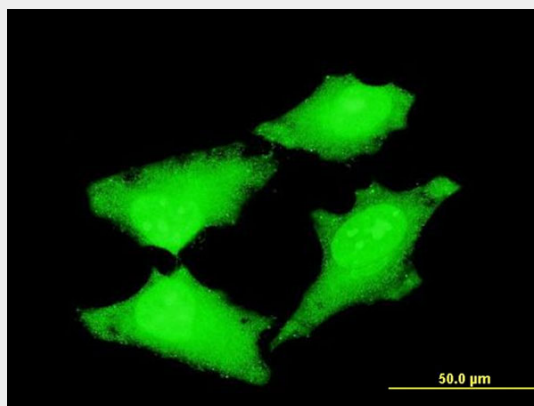
CDC45L Antibody (monoclonal) (M01) - Protocols

Provided below are standard protocols that you may find useful for product applications.

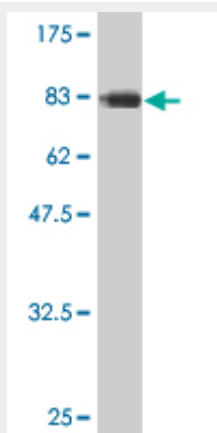
- [Western Blot](#)
- [Blocking Peptides](#)

- [Dot Blot](#)
- [Immunohistochemistry](#)
- [Immunofluorescence](#)
- [Immunoprecipitation](#)
- [Flow Cytometry](#)
- [Cell Culture](#)

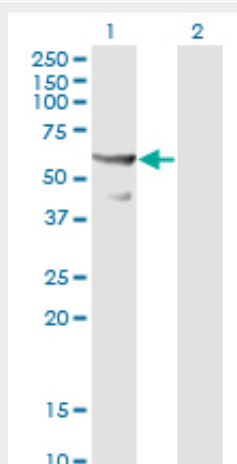
CDC45L Antibody (monoclonal) (M01) - Images



Immunofluorescence of monoclonal antibody to CDC45L on HeLa cell . [antibody concentration 10 ug/ml]



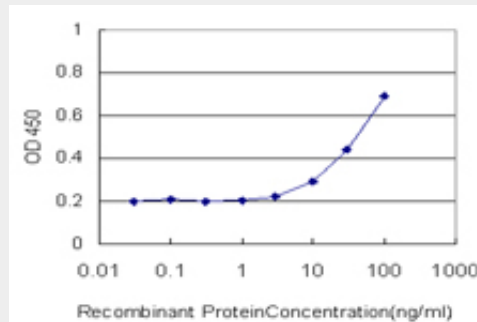
Antibody Reactive Against Recombinant Protein. Western Blot detection against Immunogen (88 KDa) .



Western Blot analysis of CDC45L expression in transfected 293T cell line by CDC45L monoclonal antibody (M01), clone 3F11-1F3.

Lane 1: CDC45L transfected lysate(65.6 KDa).

Lane 2: Non-transfected lysate.



Detection limit for recombinant GST tagged CDC45L is approximately 3ng/ml as a capture antibody.

CDC45L Antibody (monoclonal) (M01) - Background

The protein encoded by this gene was identified by its strong similarity with *Saccharomyces cerevisiae* Cdc45, an essential protein required to the initiation of DNA replication. Cdc45 is a member of the highly conserved multiprotein complex including Cdc6/Cdc18, the minichromosome maintenance proteins (MCMs) and DNA polymerase, which is important for early steps of DNA replication in eukaryotes. This protein has been shown to interact with MCM7 and DNA polymerase alpha. Studies of the similar gene in *Xenopus* suggested that this protein play a pivotal role in the loading of DNA polymerase alpha onto chromatin. Multiple alternatively spliced transcript variants encoding different isoforms have been found for this gene.

CDC45L Antibody (monoclonal) (M01) - References

Personalized smoking cessation: interactions between nicotine dose, dependence and quit-success genotype score. Rose JE, et al. *Mol Med*, 2010 Jul-Aug. PMID 20379614. Human Timeless and Tipin stabilize replication forks and facilitate sister-chromatid cohesion. Leman AR, et al. *J Cell Sci*, 2010 Mar 1. PMID 20124417. The DNA unwinding element binding protein DUE-B interacts with Cdc45 in preinitiation complex formation. Chowdhury A, et al. *Mol Cell Biol*, 2010 Mar. PMID 20065034. Assembly of the Cdc45-Mcm2-7-GINS complex in human cells requires the Ctf4/And-1, RecQL4, and Mcm10 proteins. Im JS, et al. *Proc Natl Acad Sci U S A*, 2009 Sep 15. PMID 19805216. Genetic variants in apoptosis and immunoregulation-related genes are associated with risk of chronic lymphocytic leukemia. Enjuanes A, et al. *Cancer Res*, 2008 Dec 15. PMID 19074885.