

CDH17 Antibody (monoclonal) (M01)**Mouse monoclonal antibody raised against a partial recombinant CDH17.****Catalog # AT1472a****Specification**

CDH17 Antibody (monoclonal) (M01) - Product Information

Application	WB, IHC, E
Primary Accession	Q12864
Other Accession	NM_004063
Reactivity	Human
Host	mouse
Clonality	Monoclonal
Isotype	IgG1 Kappa
Calculated MW	92219

CDH17 Antibody (monoclonal) (M01) - Additional Information**Gene ID** 1015**Other Names**

Cadherin-17, Intestinal peptide-associated transporter HPT-1, Liver-intestine cadherin, LI-cadherin, CDH17

Target/Specificity

CDH17 (NP_004054, 24 a.a. ~ 131 a.a) partial recombinant protein with GST tag. MW of the GST tag alone is 26 KDa.

Dilution

WB~~1:500~1000

IHC~~1:100~500

E~~N/A

Format

Clear, colorless solution in phosphate buffered saline, pH 7.2 .

Storage

Store at -20°C or lower. Aliquot to avoid repeated freezing and thawing.

Precautions

CDH17 Antibody (monoclonal) (M01) is for research use only and not for use in diagnostic or therapeutic procedures.

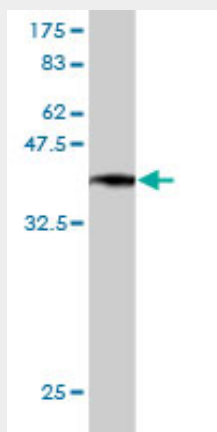
CDH17 Antibody (monoclonal) (M01) - Protocols

Provided below are standard protocols that you may find useful for product applications.

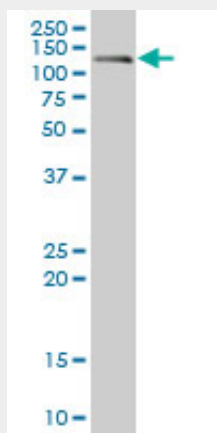
- [Western Blot](#)

- [Blocking Peptides](#)
- [Dot Blot](#)
- [Immunohistochemistry](#)
- [Immunofluorescence](#)
- [Immunoprecipitation](#)
- [Flow Cytometry](#)
- [Cell Culture](#)

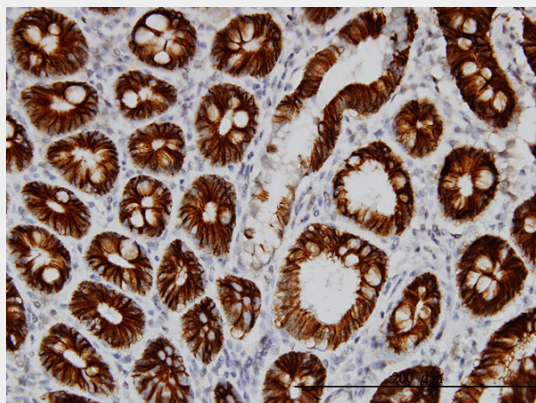
CDH17 Antibody (monoclonal) (M01) - Images



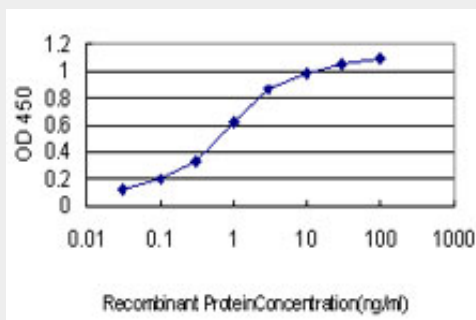
Antibody Reactive Against Recombinant Protein. Western Blot detection against Immunogen (37.62 KDa) .



CDH17 monoclonal antibody (M01), clone 1H3. Western Blot analysis of CDH17 expression in human intestinal wall.



Immunoperoxidase of monoclonal antibody to CDH17 on formalin-fixed paraffin-embedded human small Intestine. [antibody concentration 3 ug/ml]



Detection limit for recombinant GST tagged CDH17 is approximately 0.03ng/ml as a capture antibody.

CDH17 Antibody (monoclonal) (M01) - Background

This gene is a member of the cadherin superfamily, genes encoding calcium-dependent, membrane-associated glycoproteins. The encoded protein is cadherin-like, consisting of an extracellular region, containing 7 cadherin domains, and a transmembrane region but lacking the conserved cytoplasmic domain. The protein is a component of the gastrointestinal tract and pancreatic ducts, acting as an intestinal proton-dependent peptide transporter in the first step in oral absorption of many medically important peptide-based drugs. The protein may also play a role in the morphological organization of liver and intestine. Alternative splicing results in multiple transcript variants.

CDH17 Antibody (monoclonal) (M01) - References

1.Comparison of cadherin-17 expression between primary colorectal adenocarcinomas and their corresponding metastases: the possibility of a diagnostic marker for detecting the primary site of metastatic tumour.Park JH, Seol JA, Choi HJ, Roh YH, Choi PJ, Lee KE, Roh MS.Histopathology. 2011 Jan;58(2):315-8. doi: 10.1111/j.1365-2559.2011.03746.x.2.Cadherin-17 is a useful diagnostic marker for adenocarcinomas of the digestive system.Su MC, Yuan RH, Lin CY, Jeng YM.Mod Pathol. 2008 Nov;21(11):1379-86. Epub 2008 Jun 13.