

**CDKN2D Antibody (monoclonal) (M08)****Mouse monoclonal antibody raised against a full-length recombinant CDKN2D.****Catalog # AT1483a****Specification**

---

**CDKN2D Antibody (monoclonal) (M08) - Product Information**

Application	WB, IP, E
Primary Accession	<a href="#">P55273</a>
Other Accession	<a href="#">BC001822</a>
Reactivity	Human
Host	mouse
Clonality	Monoclonal
Isotype	IgG2b Kappa
Calculated MW	17700

**CDKN2D Antibody (monoclonal) (M08) - Additional Information****Gene ID** 1032**Other Names**

Cyclin-dependent kinase 4 inhibitor D, p19-INK4d, CDKN2D

**Target/Specificity**

CDKN2D (AAH01822, 1 a.a. ~ 166 a.a) full-length recombinant protein with GST tag. MW of the GST tag alone is 26 KDa.

**Dilution**

WB~~1:500~1000

IP~~N/A

E~~N/A

**Format**

Clear, colorless solution in phosphate buffered saline, pH 7.2 .

**Storage**

Store at -20°C or lower. Aliquot to avoid repeated freezing and thawing.

**Precautions**

CDKN2D Antibody (monoclonal) (M08) is for research use only and not for use in diagnostic or therapeutic procedures.

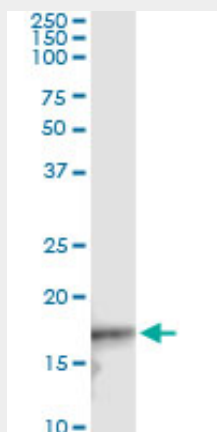
**CDKN2D Antibody (monoclonal) (M08) - Protocols**

Provided below are standard protocols that you may find useful for product applications.

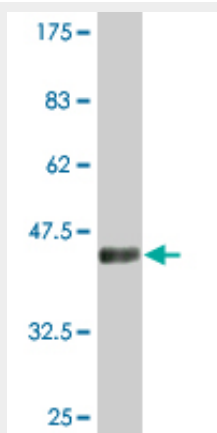
- [Western Blot](#)
- [Blocking Peptides](#)

- [Dot Blot](#)
- [Immunohistochemistry](#)
- [Immunofluorescence](#)
- [Immunoprecipitation](#)
- [Flow Cytometry](#)
- [Cell Culture](#)

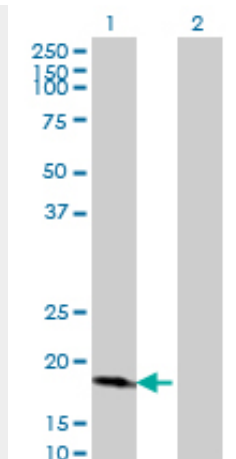
#### CDKN2D Antibody (monoclonal) (M08) - Images



Immunoprecipitation of CDKN2D transfected lysate using anti-CDKN2D monoclonal antibody and Protein A Magnetic Bead ([U0007](#)), and immunoblotted with CDKN2D MaxPab rabbit polyclonal antibody.



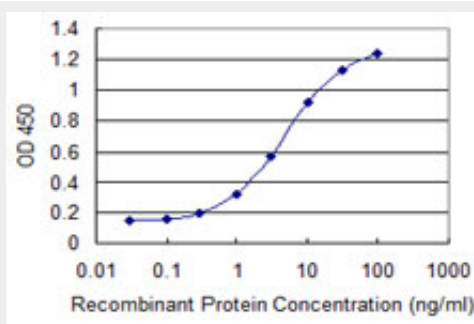
Antibody Reactive Against Recombinant Protein. Western Blot detection against Immunogen (44 kDa) .



Western Blot analysis of CDKN2D expression in transfected 293T cell line by CDKN2D monoclonal antibody (M08), clone 2E10.

Lane 1: CDKN2D transfected lysate(17.7 KDa).

Lane 2: Non-transfected lysate.



Detection limit for recombinant GST tagged CDKN2D is 0.1 ng/ml as a capture antibody.

### CDKN2D Antibody (monoclonal) (M08) - Background

The protein encoded by this gene is a member of the INK4 family of cyclin-dependent kinase inhibitors. This protein has been shown to form a stable complex with CDK4 or CDK6, and prevent the activation of the CDK kinases, thus function as a cell growth regulator that controls cell cycle G1 progression. The abundance of the transcript of this gene was found to oscillate in a cell-cycle dependent manner with the lowest expression at mid G1 and a maximal expression during S phase. The negative regulation of the cell cycle involved in this protein was shown to participate in repressing neuronal proliferation, as well as spermatogenesis. Two alternatively spliced variants of this gene, which encode an identical protein, have been reported.

### CDKN2D Antibody (monoclonal) (M08) - References

Cell cycle genes and ovarian cancer susceptibility: a tagSNP analysis. Cunningham JM, et al. Br J Cancer, 2009 Oct 20. PMID 19738611. Identification of aberrant cell cycle regulation in Epstein-Barr virus-associated nasopharyngeal carcinoma by cDNA microarray and gene set enrichment analysis. Zhang W, et al. Acta Biochim Biophys Sin (Shanghai), 2009 May. PMID 19430707. Candidate gene analysis using imputed genotypes: cell cycle single-nucleotide polymorphisms and ovarian cancer risk. Goode EL, et al. Cancer Epidemiol Biomarkers Prev, 2009 Mar. PMID 19258477. Rare germline mutations in cyclin-dependent kinase inhibitor genes in multiple endocrine neoplasia type 1 and related states. Agarwal SK, et al. J Clin Endocrinol Metab, 2009 May. PMID 19141585. Common genetic variation in candidate genes and susceptibility to subtypes of breast cancer. Mavaddat N, et

al. Cancer Epidemiol Biomarkers Prev, 2009 Jan. PMID 19124506.